

For Research Use Only

# GMF Beta Monoclonal antibody

Catalog Number: 60062-1-Ig **4 Publications**



## Basic Information

<b>Catalog Number:</b> 60062-1-Ig	<b>GenBank Accession Number:</b> BC005359	<b>Purification Method:</b> Protein G purification
<b>Size:</b> 150ul , Concentration: 780 µg/ml by Nanodrop and 680 µg/ml by Bradford method using BSA as the standard;	<b>GeneID (NCBI):</b> 2764	<b>CloneNo.:</b> 3B10A2
<b>Source:</b> Mouse	<b>Full Name:</b> glia maturation factor, beta	<b>Recommended Dilutions:</b> WB 1:1000-1:8000 IHC 1:50-1:500 IF 1:200-1:800
<b>Isotype:</b> IgG1	<b>Calculated MW:</b> 17 kDa	
<b>Immunogen Catalog Number:</b> AG1104	<b>Observed MW:</b> 17 kDa	

## Applications

<b>Tested Applications:</b> IF, IHC, WB, ELISA	<b>Positive Controls:</b> WB : fetal human brain tissue, pig liver tissue
<b>Cited Applications:</b> IF, IP	<b>IHC :</b> human brain tissue,
<b>Species Specificity:</b> human, pig	<b>IF :</b> U-87 MG cells, HeLa cells
<b>Cited Species:</b> human, mouse	

**Note-IHC: suggested antigen retrieval with TE buffer pH 9.0; (\*) Alternatively, antigen retrieval may be performed with citrate buffer pH 6.0**

## Background Information

GMFB, Glia maturation factor beta, is a nerve growth factor implicated in nervous system development. It was reported that GMF-beta promotes the phenotypic expression of glia and neurons and inhibits the proliferation of their respective tumors in culture cells. GMF-beta protein is specific to the brain where it is expressed in glial cells (mainly astrocytes) and insome neurons. Higher levels of GMFB were found in the central nervous system, except for the spinal cord, and in thymus and colon.

## Notable Publications

Author	Pubmed ID	Journal	Application
Brawnie Petrov	29531242	Transl Psychiatry	IP
Tong Zhu	35860559	Front Oncol	IF
Duraisamy Kempuraj	26275153	PLoS One	IF

## Storage

**Storage:**  
Store at -20°C. Stable for one year after shipment.  
**Storage Buffer:**  
PBS with 0.02% sodium azide and 50% glycerol pH 7.3.  
Aliquoting is unnecessary for -20°C storage

\*\*\* 20ul sizes contain 0.1% BSA

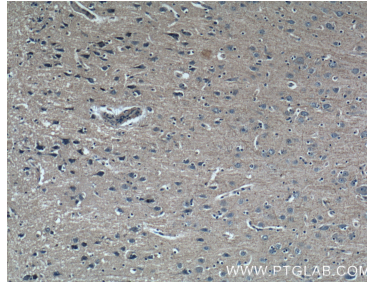
For technical support and original validation data for this product please contact:  
T: 1 (888) 4PTGLAB (1-888-478-4522) (toll free in USA), or 1(312) 455-8498 (outside USA) E: proteintech@ptglab.com W: ptglab.com

This product is exclusively available under Proteintech Group brand and is not available to purchase from any other manufacturer.

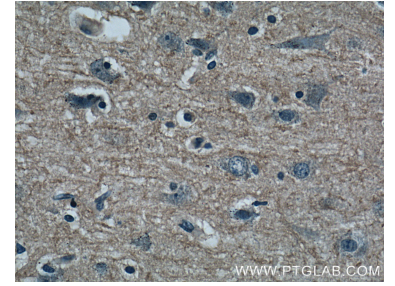
## Selected Validation Data



fetal human brain tissue were subjected to SDS PAGE followed by western blot with 60062-1-Ig (GMF-beta antibody at dilution of 1:4000 incubated at room temperature for 1.5 hours.



Immunohistochemical analysis of paraffin-embedded human brain tissue slide using 60062-1-Ig (GMF-beta antibody at dilution of 1:200 (under 10x lens).



Immunohistochemical analysis of paraffin-embedded human brain tissue slide using 60062-1-Ig (GMF-beta antibody at dilution of 1:200 (under 40x lens).