

For Research Use Only

GMF Beta Monoclonal antibody, PBS Only



Catalog Number: 60062-1-PBS

Basic Information

Catalog Number: 60062-1-PBS	GenBank Accession Number: BC005359	Purification Method: Protein G purification
Size: 100ug , Concentration: 1 mg/ml by Nanodrop;	GeneID (NCBI): 2764	CloneNo.: 3B10A2
Source: Mouse	UNIPROT ID: P60983	
Isotype: IgG1	Full Name: glia maturation factor, beta	
Immunogen Catalog Number: AG1104	Calculated MW: 17 kDa	
	Observed MW: 17 kDa	

Applications

Tested Applications:
WB, IF, IHC, Indirect ELISA

Species Specificity:
human, pig

Background Information

GMFB, Glia maturation factor beta, is a nerve growth factor implicated in nervous system development. It was reported that GMF-beta promotes the phenotypic expression of glia and neurons and inhibits the proliferation of their respective tumors in culture cells. GMF-beta protein is specific to the brain where it is expressed in glial cells (mainly astrocytes) and insome neurons. Higher levels of GMFB were found in the central nervous system, except for the spinal cord, and in thymus and colon.

Storage

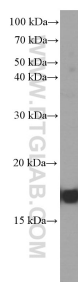
Storage:
Store at -80°C.

Storage Buffer:
PBS Only

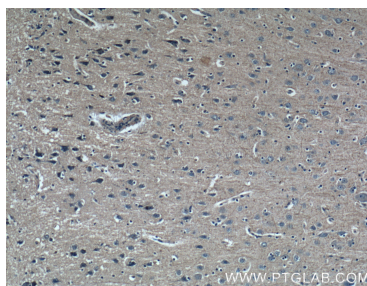
For technical support and original validation data for this product please contact:
T: 1 (888) 4PTGLAB (1-888-478-4522) (toll free in USA), or 1(312) 455-8498 (outside USA)
E: proteintech@ptglab.com
W: ptglab.com

This product is exclusively available under Proteintech Group brand and is not available to purchase from any other manufacturer.

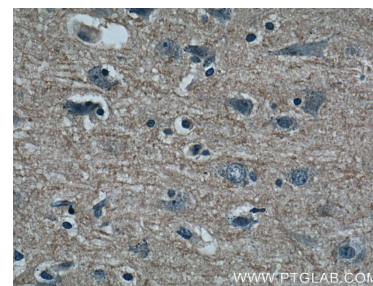
Selected Validation Data



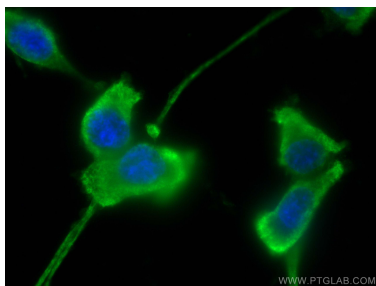
fetal human brain tissue were subjected to SDS PAGE followed by western blot with 60062-1-Ig (GMF-beta antibody at dilution of 1:4000 incubated at room temperature for 1.5 hours. This data was developed using the same antibody clone with 60062-1-PBS in a different storage buffer formulation.



Immunohistochemical analysis of paraffin-embedded human brain tissue slide using 60062-1-Ig (GMF-beta antibody at dilution of 1:200 (under 10x lens). This data was developed using the same antibody clone with 60062-1-PBS in a different storage buffer formulation.



Immunohistochemical analysis of paraffin-embedded human brain tissue slide using 60062-1-Ig (GMF-beta antibody at dilution of 1:200 (under 40x lens). This data was developed using the same antibody clone with 60062-1-PBS in a different storage buffer formulation.



Immunofluorescent analysis of (-20°C Ethanol) fixed U-87 MG cells using GMF Beta antibody (60062-1-Ig, Clone: 3B10A2) at dilution of 1:400 and CoraLite®488-Conjugated AffiniPure Goat Anti-Mouse IgG(H+L). This data was developed using the same antibody clone with 60062-1-PBS in a different storage buffer formulation.