

For Research Use Only

Stanniocalcin 2 Monoclonal antibody, PBS Only (Capture)

Catalog Number: 60063-1-PBS

Featured Product



Basic Information

Catalog Number:

60063-1-PBS

Size:

100ug, Concentration: 1mg/ml by Nanodrop;

Source:

Mouse

Isotype:

IgG1

Immunogen Catalog Number:

AG0359

GenBank Accession Number:

BC000658

GeneID (NCBI):

8614

UNIPROT ID:

O76061

Full Name:

stanniocalcin 2

Calculated MW:

33 kDa

Observed MW:

44 kDa

Purification Method:

Protein A purification

CloneNo.:

4H1E7

Applications

Tested Applications:

WB, IHC, IF/ICC, Cytometric bead array, Indirect ELISA

Species Specificity:

human, mouse, pig

Product Information

60063-1-PBS targets Stanniocalcin 2 as part of a matched antibody pair:

MP50715-1: 60063-1-PBS capture and 60063-2-PBS detection (validated in Cytometric bead array)

Unconjugated mouse monoclonal antibody pair in PBS only (BSA and azide free) storage buffer at a concentration of 1 mg/mL, ready for conjugation.

This conjugation ready format makes antibodies ideal for use in many applications including: ELISAs, multiplex assays requiring matched pairs, mass cytometry, and multiplex imaging applications. Antibody use should be optimized by the end user for each application and assay.

Background Information

Stanniocalcin (STC) is a family of secreted glycoprotein hormones that originally discovered in the corpuscles of Stannius, an endocrine gland of fish. STC1 and STC2, two homologues of STC family, are reported to involve in calcium and phosphate homeostasis. It is expressed in a wide variety of tissues such as kidney, spleen, heart, and pancreas. The protein may play a role in the regulation of renal and intestinal calcium and phosphate transport, cell metabolism, or cellular calcium/phosphate homeostasis. STC2 overexpression could promote tumor cell proliferation, invasion and metastasis in prostate cancer, ovarian cancer or neuroblastoma. STC2 is also vital for cytoprotective properties when exposed to ER stress and hypoxia.

Storage

Storage:

Store at -80°C.

Storage Buffer:

PBS Only

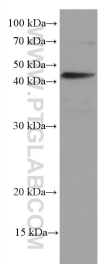
For technical support and original validation data for this product please contact:

T: 1 (888) 4PTGLAB (1-888-478-4522) (toll free in USA), or 1(312) 455-8498 (outside USA)

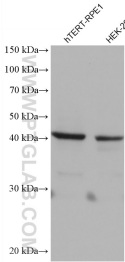
E: proteintech@ptglab.com
W: ptglab.com

This product is exclusively available under Proteintech Group brand and is not available to purchase from any other manufacturer.

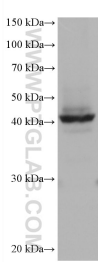
Selected Validation Data



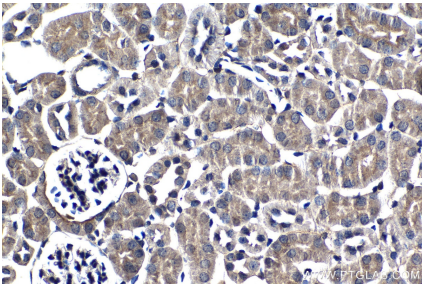
A549 cells were subjected to SDS PAGE followed by western blot with 60063-1-Ig (Stanniocalcin 2 antibody) at dilution of 1:3000 incubated at room temperature for 1.5 hours. This data was developed using the same antibody clone with 60063-1-PBS in a different storage buffer formulation.



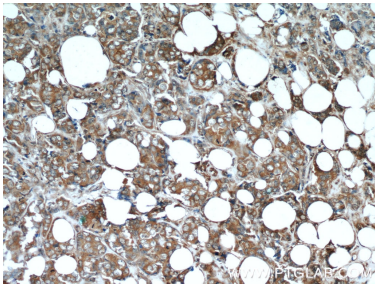
Various lysates were subjected to SDS PAGE followed by western blot with 60063-1-Ig (Stanniocalcin 2 antibody) at dilution of 1:1000 incubated at room temperature for 1.5 hours. This data was developed using the same antibody clone with 60063-1-PBS in a different storage buffer formulation.



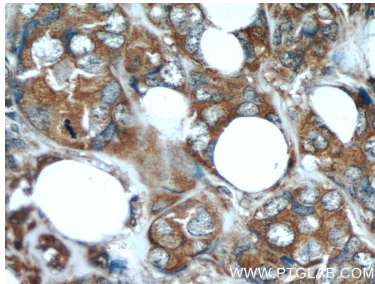
T-47D cells were subjected to SDS PAGE followed by western blot with 60063-1-Ig (Stanniocalcin 2 antibody) at dilution of 1:1000 incubated at room temperature for 1.5 hours. This data was developed using the same antibody clone with 60063-1-PBS in a different storage buffer formulation.



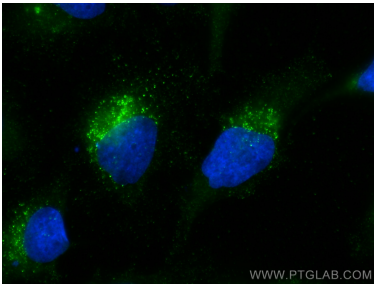
Immunohistochemical analysis of paraffin-embedded mouse kidney tissue slide using 60063-1-Ig (Stanniocalcin 2 antibody) at dilution of 1:1000 (under 40x lens). Heat mediated antigen retrieval with Tris-EDTA buffer (pH 9.0). This data was developed using the same antibody clone with 60063-1-PBS in a different storage buffer formulation.



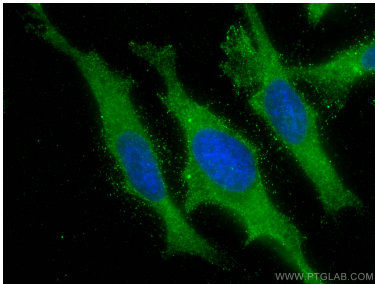
Immunohistochemical analysis of paraffin-embedded human breast cancer using 60063-1-Ig (Stanniocalcin 2 antibody) at dilution of 1:50 (under 10x lens). This data was developed using the same antibody clone with 60063-1-PBS in a different storage buffer formulation.



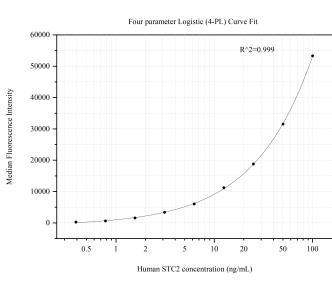
Immunohistochemical analysis of paraffin-embedded human breast cancer using 60063-1-Ig (Stanniocalcin 2 antibody) at dilution of 1:50 (under 40x lens). This data was developed using the same antibody clone with 60063-1-PBS in a different storage buffer formulation.



Immunofluorescent analysis of (-20°C Methanol) fixed HeLa cells using Stanniocalcin 2 antibody (60063-1-Ig, Clone: 4H1E7) at dilution of 1:800 and CoraLite®488-Conjugated AffiniPure Goat Anti-Mouse IgG(H+L). This data was developed using the same antibody clone with 60063-1-PBS in a different storage buffer formulation.



Immunofluorescent analysis of (-20°C Methanol) fixed HeLa cells using Stanniocalcin 2 antibody (60063-1-Ig, Clone: 4H1E7) at dilution of 1:500 and CoraLite®488-Conjugated AffiniPure Goat Anti-Mouse IgG(H+L). This data was developed using the same antibody clone with 60063-1-PBS in a different storage buffer formulation.



Cytometric bead array standard curve of MP50715-1, STC2/Stanniocalcin 2 Monoclonal Matched Antibody Pair, PBS Only. Capture antibody: 60063-1-PBS. Detection antibody: 60063-2-PBS. Standard:Ag0359. Range: 0.391-100 ng/mL.