

For Research Use Only

Neuropilin 1 Monoclonal antibody

Catalog Number: 60067-1-Ig

Featured Product

23 Publications



Basic Information

Catalog Number:

60067-1-Ig

Size:

150ul, Concentration: 1500 ug/ml by Nanodrop and 1000 ug/ml by Bradford method using BSA as the standard;

Source:

Mouse

Isotype:

IgG1

Immunogen Catalog Number:

AG0931

GenBank Accession Number:

BC007737

GeneID (NCBI):

8829

UNIPROT ID:

O14786

Full Name:

neuropilin 1

Calculated MW:

103 kDa

Observed MW:

130 kDa

Purification Method:

Protein A purification

CloneNo.:

2H3F6

Recommended Dilutions:

WB 1:1000-1:6000

IF/ICC 1:50-1:500

Applications

Tested Applications:

WB, IF/ICC, ELISA

Cited Applications:

WB, IF, IP, ColP

Species Specificity:

human, pig, rabbit

Cited Species:

human, mouse, rabbit, xenopus

Positive Controls:

WB : human placenta tissue, fetal human brain tissue, human plasma, 37°C incubated human placenta tissue, pig brain tissue, HeLa cells, rabbit heart tissue, MDA-MB-231 cells, A549 cells, pig heart tissue

IF/ICC : SH-SY5Y cells, human embryonic stem cells

Background Information

Neuropilin-1 (NRP1) is a 130-140 kDa transmembrane glycoprotein expressed by endothelial, dendritic, and regulatory T cells, as well as several other normal cell types and malignant tumor cells. NRP1 was first identified as a semaphorin (SEMA) receptor, involved in axonal guidance in embryonic development. NRP1 was also shown to act as a receptor for vascular endothelial growth factor (VEGF) and a promoter of angiogenesis through its interaction with VEGF-A165 (and other VEGFs) and the receptor tyrosine kinase (RTK) VEGF-R2. NRP1 plays versatile roles in angiogenesis, axon guidance, cell survival, migration, and invasion.

Notable Publications

Author	Pubmed ID	Journal	Application
Chunxi Liu	25204970	Mol Cell Biochem	WB
Emmanuel Laplantine	36093378	iScience	WB
Max Koppers	31746735	Elife	IF

Storage

Storage:

Store at -20°C. Stable for one year after shipment.

Storage Buffer:

PBS with 0.1% sodium azide and 50% glycerol pH 7.3.

Aliquoting is unnecessary for -20°C storage

*** 20ul sizes contain 0.1% BSA

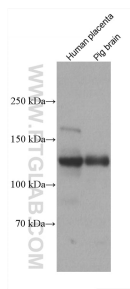
For technical support and original validation data for this product please contact:

T: 1 (888) 4PTGLAB (1-888-478-4522) (toll free in USA), or 1(312) 455-8498 (outside USA)

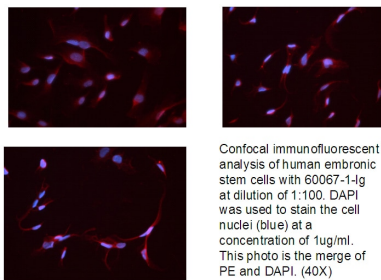
E: proteintech@ptglab.com
W: ptglab.com

This product is exclusively available under Proteintech Group brand and is not available to purchase from any other manufacturer.

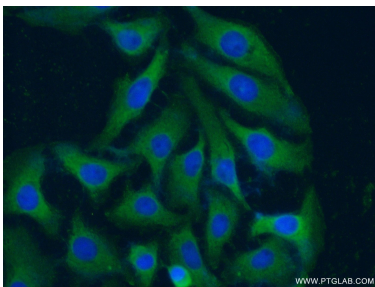
Selected Validation Data



Various lysates were subjected to SDS PAGE followed by western blot with 60067-1-Ig (Neuropilin 1 antibody) at dilution of 1:3000 incubated at room temperature for 1.5 hours.



Confocal immunofluorescent analysis of human embryonic stem cells with 60067-1-Ig at dilution of 1:100. DAPI was used to stain the cell nuclei (blue) at a concentration of 1ug/ml. This photo is the merge of PE and DAPI. (40X).



Immunofluorescent analysis of (-20°C Ethanol) fixed SH-SY5Y cells using 60067-1-Ig(Neuropilin 1 antibody) at dilution of 1:100 and Alexa Fluor 488-conjugated AffiniPure Goat Anti-Mouse IgG(H+L).