

For Research Use Only

# Septin 2 Monoclonal antibody

Catalog Number: 60075-1-Ig

Featured Product

18 Publications



## Basic Information

Catalog Number:

60075-1-Ig

Size:

150ul, Concentration: 720 ug/ml by Bradford method using BSA as the standard;

Source:

Mouse

Isotype:

IgG1

Immunogen Catalog Number:

AG1946

GenBank Accession Number:

BC014455

GeneID (NCBI):

4735

UNIPROT ID:

Q15019

Full Name:

septin 2

Calculated MW:

41 kDa

Observed MW:

42-45 kDa

Purification Method:

Protein G purification

CloneNo.:

2F3B2

Recommended Dilutions:

WB 1:20000-1:100000

IHC 1:50-1:2000

IF/ICC 1:400-1:1600

## Applications

Tested Applications:

WB, IHC, IF/ICC, FC (Intra), ELISA

Cited Applications:

WB, IF, ColP

Species Specificity:

human, mouse, rat

Cited Species:

human, mouse, rat, canine

**Note-IHC: suggested antigen retrieval with TE buffer pH 9.0; (\*) Alternatively, antigen retrieval may be performed with citrate buffer pH 6.0**

Positive Controls:

**WB**: LNCaP cells, Jurkat cells, fetal human brain tissue, human testis tissue, HeLa cells, HEK-293 cells, HepG2 cells, K-562 cells, HSC-T6 cells, NIH/3T3 cells, 4T1 cells, MCF-7 cells, HSCT6 cells, ROS1728 cells, Neuro-2A cells

**IHC**: human renal cell carcinoma tissue, human brain tissue, human liver cancer tissue

**IF/ICC**: K-562 cells, hTERT-RPE cells

## Background Information

Septin 2, also named as DIFF6, KIAA0158, NEDD5, belongs to the septin family. It is a filament-forming cytoskeletal GTPase. Septin 2 is required for normal organization of the actin cytoskeleton. It plays a role in ciliogenesis and collective cell movements. Septin 2 is coordinated expression with Septin 6 and Septin 7. (PMID:21737677)

## Notable Publications

Author	Pubmed ID	Journal	Application
Lei Wang	34782749	Cell Res	WB
Damián Lobato-Márquez	29752866	Cytoskeleton (Hoboken)	WB,IF
Oleg V Kim	35832887	iScience	ColP

## Storage

Storage:

Store at -20°C. Stable for one year after shipment.

Storage Buffer:

PBS with 0.1% sodium azide and 50% glycerol pH 7.3.

Aliquoting is unnecessary for -20°C storage

\*\*\* 20ul sizes contain 0.1% BSA

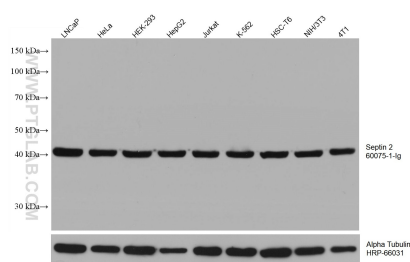
For technical support and original validation data for this product please contact:

T: 1 (888) 4PTGLAB (1-888-478-4522) (toll free in USA), or 1(312) 455-8498 (outside USA)

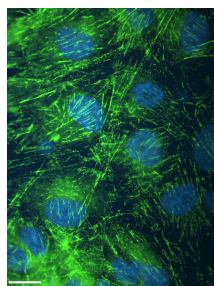
E: [proteintech@ptglab.com](mailto:proteintech@ptglab.com)  
W: [ptglab.com](http://ptglab.com)

This product is exclusively available under Proteintech Group brand and is not available to purchase from any other manufacturer.

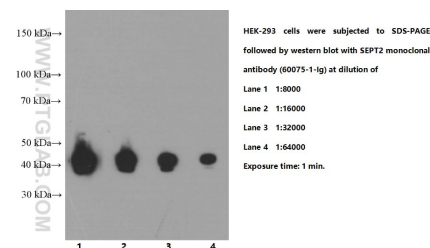
## Selected Validation Data



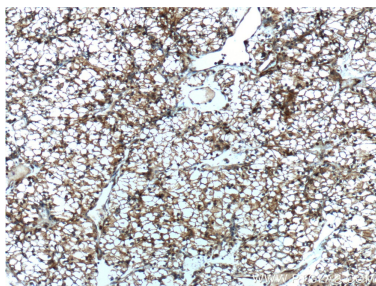
Various lysates were subjected to SDS PAGE followed by western blot with 60075-1-Ig (Septin 2 antibody) at dilution of 1:100000 incubated at room temperature for 1.5 hours. The membrane was stripped and reblotted with HRP-conjugated Alpha Tubulin Monoclonal antibody (HRP-66031) as loading control.



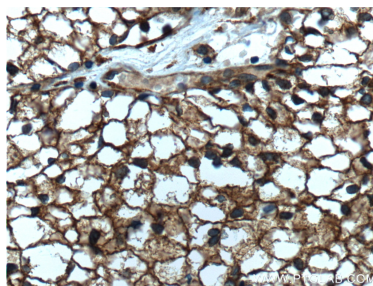
IF result of anti-Septin 2 (60075-1-Ig, 1:1000) with hTERT-RPE cell by Dr. Moshe Kim. Green: Septin 2. Blue: DNA. 1% PFA fixed.



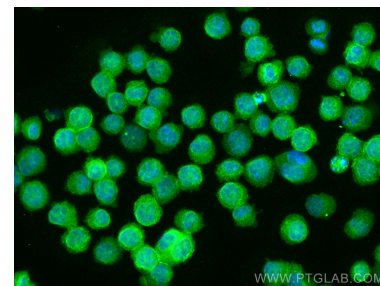
HEK-293 cells were subjected to SDS PAGE followed by western blot with 60075-1-Ig (Septin 2 Antibody) at various dilutions incubated at room temperature for 1.5 hours.



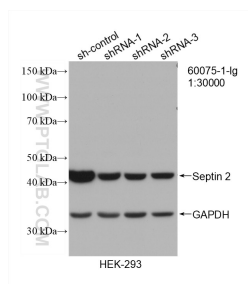
Immunohistochemical analysis of paraffin-embedded human renal cell carcinoma tissue slide using 60075-1-Ig (Septin 2 Antibody) at dilution of 1:800 (under 10x lens). Heat mediated antigen retrieval with Tris-EDTA buffer (pH 9.0).



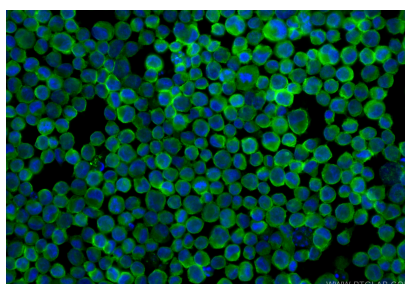
Immunohistochemical analysis of paraffin-embedded human renal cell carcinoma tissue slide using 60075-1-Ig (Septin 2 Antibody) at dilution of 1:800 (under 40x lens). Heat mediated antigen retrieval with Tris-EDTA buffer (pH 9.0).



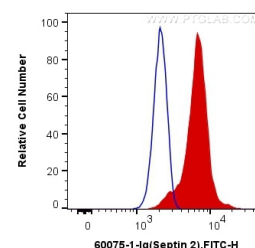
Immunofluorescent analysis of (4% PFA) fixed K-562 cells using Septin 2 antibody (60075-1-Ig, Clone: 2F3B2) at dilution of 1:800 and CoraLite®488-Conjugated AffiniPure Goat Anti-Mouse IgG(H+L).



WB result of Septin 2 antibody (60075-1-Ig; 1:30000; incubated at room temperature for 1.5 hours) with sh-Control and sh-Septin 2 transfected HEK-293 cells.



Immunofluorescent analysis of (4% PFA) fixed K-562 cells using Septin 2 antibody (60075-1-Ig, Clone: 2F3B2) at dilution of 1:800 and CoraLite®488-Conjugated AffiniPure Goat Anti-Mouse IgG(H+L) (SA00013-1).



1X10<sup>6</sup> K-562 cells were intracellularly stained with 0.4 ug Anti-Human Septin 2 (60075-1-Ig, Clone:2F3B2) and CoraLite®488-Conjugated AffiniPure Goat Anti-Mouse IgG(H+L) at dilution 1:1000 (red), or 0.4 ug Control Antibody. Cells were fixed with 4% PFA and permeabilized with Flow Cytometry Perm Buffer (PF00011-C).