

BORIS Monoclonal antibody

Catalog Number: 60079-1-Ig 1 Publications

Basic Information

Catalog Number: 60079-1-Ig	GenBank Accession Number: BC130486	Purification Method: Protein A purification
Size: 150ul, Concentration: 713 µg/ml by Bradford method using BSA as the standard;	GeneID (NCBI): 140690	CloneNo.: 2B12E2
Source: Mouse	Full Name: CCCTC-binding factor (zinc finger protein)-like	Recommended Dilutions: WB 1:500-1:2000 IF 1:200-1:800
Isotype: IgG1	Calculated MW: 82 kDa, 75 kDa	
Immunogen Catalog Number: AG1003	Observed MW: 75 kDa	

Applications

Tested Applications: IF, WB, ELISA	Positive Controls:
Cited Applications: WB	WB : Hela cells, SMMC-7721 cells
Species Specificity: human, mouse	IF : HeLa cells,
Cited Species: human	

Background Information

CTCF, also named BORIS (for brother of the regulator of imprinted sites) is a paralogue of the 11 zinc-finger transcription factor, CTCF. It is predominantly expressed in spermatocytes in the testis, also can be found in tumors and cancer cell lines. It mainly participates in insulator function, nuclear architecture and transcriptional control, which probably acts by recruiting epigenetic chromatin modifiers. It has a key role in gene imprinting in male germline, by participating in the establishment of differential methylation at the IGF2/H19 imprinted control region (ICR). Directly binds the unmethylated H19 ICR and recruits the PRMT7 methyltransferase, leading to methylate histone H4 'Arg-3' to form H4R3me2.

Notable Publications

Author	Pubmed ID	Journal	Application
Kui Xiao	34714841	PLoS One	WB

Storage

Storage:
Store at -20°C. Stable for one year after shipment.
Storage Buffer:
PBS with 0.1% sodium azide and 50% glycerol pH 7.3.
 Aliquoting is unnecessary for -20°C storage

*** 20ul sizes contain 0.1% BSA

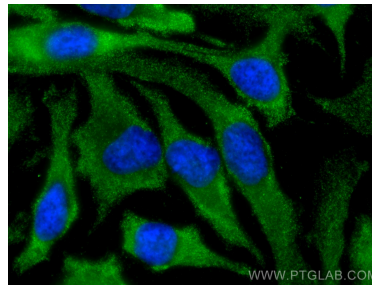
For technical support and original validation data for this product please contact:
 T: 1 (888) 4PTGLAB (1-888-478-4522) (toll free in USA), or 1(312) 455-8498 (outside USA)
 E: proteintech@ptglab.com
 W: ptglab.com

This product is exclusively available under Proteintech Group brand and is not available to purchase from any other manufacturer.

Selected Validation Data



HeLa cells were subjected to SDS PAGE followed by western blot with 60079-1-Ig (BORIS antibody) at dilution of 1:1000 incubated at room temperature for 1.5 hours.



Immunofluorescent analysis of (-20°C Methanol) fixed HeLa cells using BORIS antibody (60079-1-Ig, Clone: 2B12E2) at dilution of 1:400 and CoraLite®488-Conjugated AffiniPure Goat Anti-Mouse IgG(H+L).