

For Research Use Only

BCRP/ABCG2 Monoclonal antibody

Catalog Number: 60080-1-Ig **3 Publications**



Basic Information

Catalog Number:

60080-1-Ig

Size:

150ul, Concentration: 1320 µg/ml by Bradford method using BSA as the standard;

Source:

Mouse

Isotype:

IgG1

Immunogen Catalog Number:

AG4869

GenBank Accession Number:

BC021281

GeneID (NCBI):

9429

UNIPROT ID:

Q9UNQ0

Full Name:

ATP-binding cassette, sub-family G (WHITE), member 2

Calculated MW:

70 kDa

Observed MW:

70-80 kDa, 140-160 kDa

Purification Method:

Caprylic acid/ammonium sulfate precipitation

CloneNo.:

1D5F8

Recommended Dilutions:

WB 1:500-1:1000

IP 0.5-4.0 ug for 1.0-3.0 mg of total protein lysate

Applications

Tested Applications:

WB, IP, ELISA

Cited Applications:

WB

Species Specificity:

human

Cited Species:

human, mouse

Positive Controls:

WB : Jurkat cells,

IP : NCCIT cell,

Background Information

BCRP (breast cancer resistance protein) confers a broad spectrum of drug resistance and the expression of BCRP is enhanced in several cancer cell models. It has ATPase activity and belongs to a family of multiple drug resistant proteins. Data also indicated that BCRP might be an early marker for some stem cells.

Notable Publications

Author	Pubmed ID	Journal	Application
Simiao Yu	36403705	Fish Shellfish Immunol	WB
Jinfan Liu	37269551	J Agric Food Chem	WB
Jiaxue Peng	37087072	J Nutr Biochem	WB

Storage

Storage:

Store at -20°C. Stable for one year after shipment.

Storage Buffer:

PBS with 0.1% sodium azide and 50% glycerol pH 7.3.

Aliquoting is unnecessary for -20°C storage

*** 20ul sizes contain 0.1% BSA

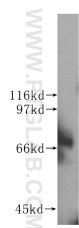
For technical support and original validation data for this product please contact:

T: 1 (888) 4PTGLAB (1-888-478-4522) (toll free in USA), or 1(312) 455-8498 (outside USA)

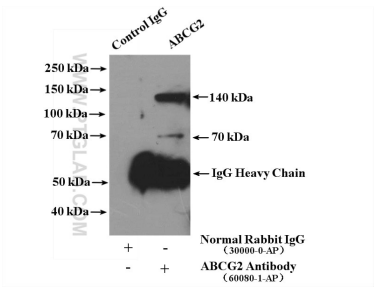
E: proteintech@ptglab.com
W: ptglab.com

This product is exclusively available under Proteintech Group brand and is not available to purchase from any other manufacturer.

Selected Validation Data



Jurkat cells were subjected to SDS PAGE followed by western blot with 60080-1-Ig (BCRP/ABCG2 antibody) at dilution of 1:500 incubated at room temperature for 1.5 hours.



IP result of anti-BCRP/ABCG2 (IP:60080-1-Ig, 4ug; Detection:60080-1-Ig 1:1000) with NCCIT cell lysate 2000ug.