

For Research Use Only

# Fibulin 5 Monoclonal antibody

Catalog Number: 60081-1-Ig

Featured Product

7 Publications



## Basic Information

Catalog Number:

60081-1-Ig

GenBank Accession Number:

BC022280

Purification Method:

Protein A purification

Size:

150ul, Concentration: 2000 ug/ml by Nanodrop and 1200 ug/ml by Bradford method using BSA as the standard;

GeneID (NCBI):

10516

CloneNo.:

2A5C8

Source:

Mouse

UNIPROT ID:

Q9UBX5

Recommended Dilutions:

WB 1:1000-1:6000

IF/ICC 1:50-1:100

Isotype:

IgG1

Full Name:

fibulin 5

Calculated MW:

448 aa, 50 kDa

Immunogen Catalog Number:

AG2859

Observed MW:

65 kDa

## Applications

Tested Applications:

WB, IF/ICC, ELISA

Cited Applications:

WB, IHC, IF, IP

Species Specificity:

human, mouse, rat, pig

Cited Species:

human, mouse, rat

Positive Controls:

WB : MCF-7 cells, pig heart tissue, human placenta tissue, human heart tissue, rat heart tissue

IF/ICC : A549 cells,

## Background Information

Fibulin-5, also known as EVEC and DANCE, is a extracellular matrix glycoprotein, secreted by various cell types such as vascular smooth muscle cells, fibroblasts and endothelial cells. Structurally, Fibulin-5 contains an Arg-Gly-Asp (RGD) motif and calcium-binding EGF-like domains. It promotes adhesion of endothelial cells through interaction of integrins and the RGD motif. FBLN5 mutations have been described in patients with age-related macular degeneration, as well as being involved in Charcot-Marie-Tooth neuropathies.

## Notable Publications

Author	Pubmed ID	Journal	Application
Emna Ouni	35341935	Matrix Biol	IF
Chung-Feng Hwang	24386352	PLoS One	IHC
Dongdong Yao	34474906	Mater Sci Eng C Mater Biol Appl	WB, IF

## Storage

Storage:

Store at -20°C. Stable for one year after shipment.

Storage Buffer:

PBS with 0.02% sodium azide and 50% glycerol, pH7.3

Aliquoting is unnecessary for -20°C storage

\*\*\* 20ul sizes contain 0.1% BSA

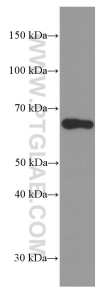
For technical support and original validation data for this product please contact:

T: 1 (888) 4PTGLAB (1-888-478-4522) (toll free in USA), or 1(312) 455-8498 (outside USA)

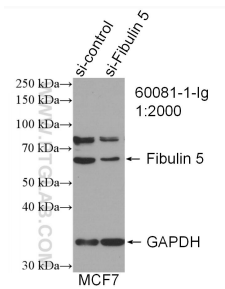
E: [proteintech@ptglab.com](mailto:proteintech@ptglab.com)  
W: [ptglab.com](http://ptglab.com)

This product is exclusively available under Proteintech Group brand and is not available to purchase from any other manufacturer.

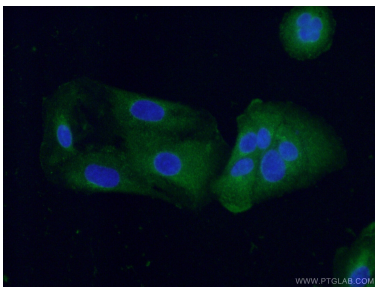
Selected Validation Data



MCF-7 cells were subjected to SDS PAGE followed by western blot with 60081-1-Ig (Fibulin 5 antibody at dilution of 1:3000 incubated at room temperature for 1.5 hours.



WB result of Fibulin 5 antibody (60081-1-Ig; 1:2000; incubated at room temperature for 1.5 hours) with sh-Control and sh-Fibulin 5 transfected MCF-7 cells.



Immunofluorescent analysis of (-20°C Ethanol ) fixed A549 cells using 60081-1-Ig(Fibulin 5 antibody) at dilution of 1:100 and Alexa Fluor 488-conjugated AffiniPure Goat Anti-Mouse IgG(H+L).