

For Research Use Only

EEF1D Monoclonal antibody

Catalog Number: 60085-1-Ig

Featured Product

5 Publications



Basic Information

Catalog Number:

60085-1-Ig

Size:

150ul, Concentration: 1000 ug/ml by Nanodrop and 1000 ug/ml by Bradford method using BSA as the standard;

Source:

Mouse

Isotype:

IgG1

Immunogen Catalog Number:

AG0983

GenBank Accession Number:

BC007847

GeneID (NCBI):

1936

UNIPROT ID:

P29692

Full Name:

eukaryotic translation elongation factor 1 delta (guanine nucleotide exchange protein)

Calculated MW:

31 kDa

Observed MW:

35-40 kDa

Purification Method:

Protein A purification

CloneNo.:

3B1B11

Recommended Dilutions:

WB 1:500-1:2000

IP 0.5-4.0 ug for 1.0-3.0 mg of total protein lysate

IHC 1:50-1:500

IF/ICC 1:400-1:1600

Applications

Tested Applications:

WB, IHC, IF/ICC, IP, ELISA

Cited Applications:

WB, IF, IP

Species Specificity:

human, mouse, rat

Cited Species:

human, mouse

Note-IHC: suggested antigen retrieval with TE buffer pH 9.0; (*) Alternatively, antigen retrieval may be performed with citrate buffer pH 6.0

Positive Controls:

WB: Jurkat cells, HeLa cells, MCF-7 cells, NIH/3T3 cells, RAW 264.7 cells

IP: MCF-7 cells,

IHC: human pancreas cancer tissue, human skin tissue

IF/ICC: HeLa cells,

Background Information

EEF1D, also named as EF1D and EF 1 delta, belongs to the EF-1-beta/EF-1-delta family. It is a subunit of the elongation factor-1 complex, which is responsible for the enzymatic delivery of aminoacyl tRNAs to the ribosome. EF-1-beta and EF-1-delta stimulate the exchange of GDP bound to EF-1-alpha to GTP. EEF1D is phosphorylated upon DNA damage, probably by ATM or ATR. The calculated molecular weight of EEF1D is a 31 kDa, but the modified protein is about 35-40 kDa. (PMID: 21936567)

Notable Publications

Author	Pubmed ID	Journal	Application
Jeremy A Whitson	28951044	Free Radic Biol Med	WB
Qingxia Gao	33087462	J Virol	WB,IF
Shuhei Sammaibashi	30008712	Front Microbiol	WB

Storage

Storage:

Store at -20°C. Stable for one year after shipment.

Storage Buffer:

PBS with 0.1% sodium azide and 50% glycerol pH 7.3.

Aliquoting is unnecessary for -20°C storage

*** 20ul sizes contain 0.1% BSA

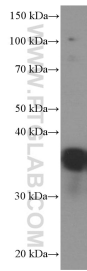
For technical support and original validation data for this product please contact:

T: 1 (888) 4PTGLAB (1-888-478-4522) (toll free in USA), or 1(312) 455-8498 (outside USA)

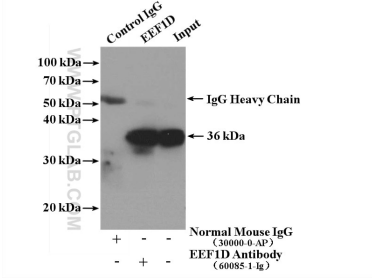
E: proteintech@ptglab.com
W: ptglab.com

This product is exclusively available under Proteintech Group brand and is not available to purchase from any other manufacturer.

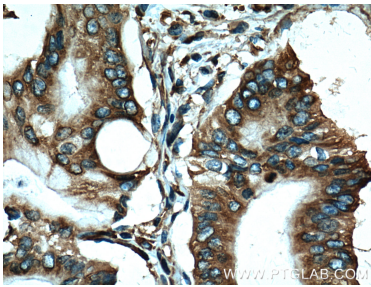
Selected Validation Data



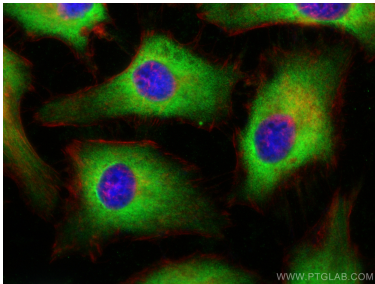
Jurkat cells were subjected to SDS PAGE followed by western blot with 60085-1-Ig (EEF1D Antibody) at dilution of 1:1000 incubated at room temperature for 1.5 hours.



IP result of anti-EEF1D (IP:60085-1-Ig, 5ug; Detection:60085-1-Ig 1:1000) with MCF-7 cells lysate 3200ug.



Immunohistochemical analysis of paraffin-embedded human pancreas cancer tissue slide using 60085-1-Ig (EEF1D Antibody) at dilution of 1:200 (under 40x lens). Heat mediated antigen retrieval with Tris-EDTA buffer (pH 9.0).



Immunofluorescent analysis of (-20°C Ethanol) fixed HeLa cells using EEF1D antibody (60085-1-Ig, Clone: 3B1B11) at dilution of 1:800 and CoraLite@488-Conjugated Goat Anti-Mouse IgG(H+L) (SA00013-1), CL594-Phalloidin (red).