

For Research Use Only

EEF1D Monoclonal antibody, PBS Only



Catalog Number: 60085-1-PBS

Featured Product

Basic Information

Catalog Number:

60085-1-PBS

Size:

100ug, Concentration: 1 mg/ml by Nanodrop;

Source:

Mouse

Isotype:

IgG1

Immunogen Catalog Number:

AG0983

GenBank Accession Number:

BC007847

GeneID (NCBI):

1936

UNIPROT ID:

P29692

Full Name:

eukaryotic translation elongation factor 1 delta (guanine nucleotide exchange protein)

Calculated MW:

31 kDa

Observed MW:

35-40 kDa

Purification Method:

Protein A purification

CloneNo.:

3B1B11

Applications

Tested Applications:

WB, IP, IF, IHC, ELISA

Species Specificity:

human, mouse, rat

Background Information

EEF1D, also named as EF1D and EF 1 delta, belongs to the EF-1-beta/EF-1-delta family. It is a subunit of the elongation factor-1 complex, which is responsible for the enzymatic delivery of aminoacyl tRNAs to the ribosome. EF-1-beta and EF-1-delta stimulate the exchange of GDP bound to EF-1-alpha to GTP. EEF1D is phosphorylated upon DNA damage, probably by ATM or ATR. The calculated molecular weight of EEF1D is a 31 kDa, but the modified protein is about 35-40 kDa. (PMID: 21936567)

Storage

Storage:

Store at -80°C.

Storage Buffer:

PBS only

For technical support and original validation data for this product please contact:

T: 1 (888) 4PTGLAB (1-888-478-4522) (toll free in USA), or 1(312) 455-8498 (outside USA)

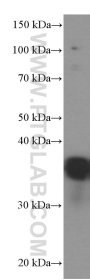
E: proteintech@ptglab.com
W: ptglab.com

This product is exclusively available under Proteintech Group brand and is not available to purchase from any other manufacturer.

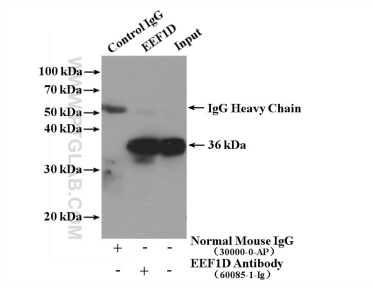
Selected Validation Data



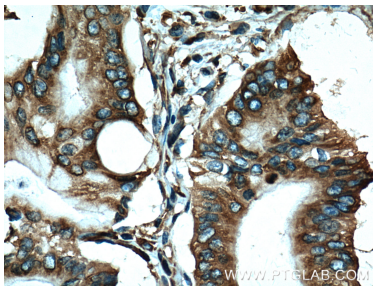
Immunofluorescent analysis of MCF-7 cells, using EEF1D antibody 60085-1-Ig at 1:25 dilution and Rhodamine-labeled goat anti-mouse IgG (red).. This data was developed using the same antibody clone with 60085-1-PBS in a different storage buffer formulation.



Jurkat cells were subjected to SDS PAGE followed by western blot with 60085-1-Ig (EEF1D Antibody) at dilution of 1:1000 incubated at room temperature for 1.5 hours. This data was developed using the same antibody clone with 60085-1-PBS in a different storage buffer formulation.



IP result of anti-EEF1D (IP:60085-1-Ig, 5ug; Detection:60085-1-Ig 1:1000) with MCF-7 cells lysate 3200ug. This data was developed using the same antibody clone with 60085-1-PBS in a different storage buffer formulation.



Immunohistochemical analysis of paraffin-embedded human pancreas cancer tissue slide using 60085-1-Ig (EEF1D Antibody) at dilution of 1:200 (under 40x lens). Heat mediated antigen retrieval with Tris-EDTA buffer (pH 9.0). This data was developed using the same antibody clone with 60085-1-PBS in a different storage buffer formulation.