

For Research Use Only

EEF1D Monoclonal antibody

Catalog Number: 60085-2-Ig

Featured Product

1 Publications



Basic Information

Catalog Number:

60085-2-Ig

GenBank Accession Number:

BC007847

Purification Method:

Protein A purification

Size:

150ul, Concentration: 1700 µg/ml by 1936

GeneID (NCBI):

1936

CloneNo.:

3G4C4

Nanodrop and 1000 µg/ml by Bradford method using BSA as the standard;

Full Name:

eukaryotic translation elongation factor 1 delta (guanine nucleotide exchange protein)

Recommended Dilutions:

WB 1:500-1:2000

Source:

Mouse

Calculated MW:

31 kDa

IP 0.5-4.0 µg for IP and 1:500-1:2000 for WB

Isotype:

IgG1

Observed MW:

35-40 kDa

Immunogen Catalog Number:

AG0983

IHC 1:20-1:200

Applications

Tested Applications:

IHC, IP, WB, ELISA

Positive Controls:

WB : transfection MCF-7 cells, HeLa cells, Jurkat cells, MCF-7 cells, NIH/3T3 cells, RAW 264.7 cells

Cited Applications:

IF, WB

IP : MCF-7 cells,

Species Specificity:

human, mouse, rat

IHC : human pancreas cancer tissue,

Cited Species:

human

Note-IHC: suggested antigen retrieval with TE buffer pH 9.0; (*) Alternatively, antigen retrieval may be performed with citrate buffer pH 6.0

Background Information

EEF1D, also named as EF1D and EF 1 delta, belongs to the EF-1-beta/EF-1-delta family. It is a subunit of the elongation factor-1 complex, which is responsible for the enzymatic delivery of aminoacyl tRNAs to the ribosome. EF-1-beta and EF-1-delta stimulate the exchange of GDP bound to EF-1-alpha to GTP. EEF1D is phosphorylated upon DNA damage, probably by ATM or ATR. The calculated molecular weight of EEF1D is a 31 kDa, but the modified protein is about 35-40 kDa. (PMID: 21936567)

Notable Publications

Author	Pubmed ID	Journal	Application
Qingxia Gao	33087462	J Virol	WB,IF

Storage

Storage:

Store at -20°C. Stable for one year after shipment.

Storage Buffer:

PBS with 0.1% sodium azide and 50% glycerol pH 7.3.

Aliquoting is unnecessary for -20°C storage

*** 20ul sizes contain 0.1% BSA

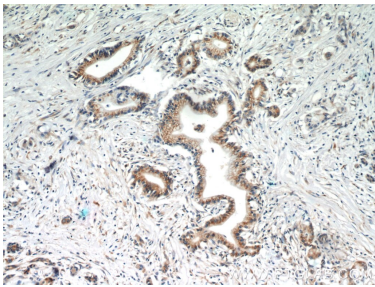
For technical support and original validation data for this product please contact:

T: 1 (888) 4PTGLAB (1-888-478-4522) (toll free in USA), or 1(312) 455-8498 (outside USA)

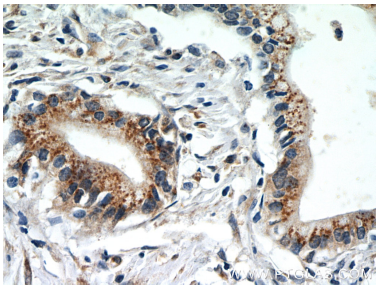
E: proteintech@ptglab.com
W: ptglab.com

This product is exclusively available under Proteintech Group brand and is not available to purchase from any other manufacturer.

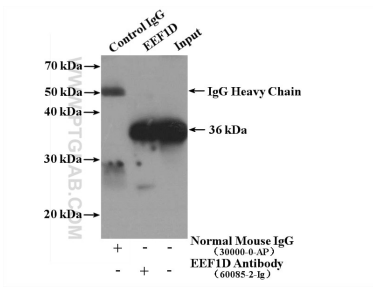
Selected Validation Data



Immunohistochemical analysis of paraffin-embedded human pancreas cancer slide using 60085-2-Ig (EEF1D Antibody) at dilution of 1:50.



Immunohistochemical analysis of paraffin-embedded human pancreas cancer slide using 60085-2-Ig (EEF1D Antibody) at dilution of 1:50.



IP Result of anti-EEF1D (IP:60085-2-Ig, 5ug; Detection:60085-2-Ig 1:1000) with MCF-7 cells lysate 3200ug.