

For Research Use Only

RISC Monoclonal antibody

Catalog Number: 60086-1-Ig **1 Publications**



Basic Information

Catalog Number: 60086-1-Ig	GenBank Accession Number: AF330052	Purification Method: Caprylic acid/ammonium sulfate precipitation
Size: 150ul, Concentration: 1000 µg/ml by Bradford method using BSA as the standard;	GeneID (NCBI): 74617	CloneNo.: 1C6A7
Source: Mouse	Full Name: serine carboxypeptidase 1	Recommended Dilutions: WB 1:500-1:2000 IHC 1:100-1:400 IF 1:10-1:100
Isotype: IgG2b	Calculated MW: 452 aa, 51 kDa	
Immunogen Catalog Number: AG0614	Observed MW: 35-40 kDa/50-60 kDa	

Applications

Tested Applications: IF, IHC, WB, ELISA	Positive Controls: WB: human testis tissue, human heart tissue, MCF-7 cells IHC: human pancreas cancer tissue, IF: C6 cells,
Cited Applications: WB	
Species Specificity: human, mouse	
Cited Species: human	
Note-IHC: suggested antigen retrieval with TE buffer pH 9.0; (*) Alternatively, antigen retrieval may be performed with citrate buffer pH 6.0	

Background Information

Scpep1(Retinoid-inducible serine carboxypeptidase) is a 51 kDa protein which is also named as RISC and belongs to the peptidase S10 family. This protein may be involved in vascular wall and kidney homeostasis.

Notable Publications

Author	Pubmed ID	Journal	Application
Huan Liu	31959090	Autophagy	WB

Storage

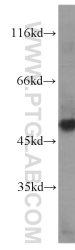
Storage:
Store at -20°C. Stable for one year after shipment.
Storage Buffer:
PBS with 0.02% sodium azide and 50% glycerol pH 7.3.
Aliquoting is unnecessary for -20°C storage

*** 20ul sizes contain 0.1% BSA

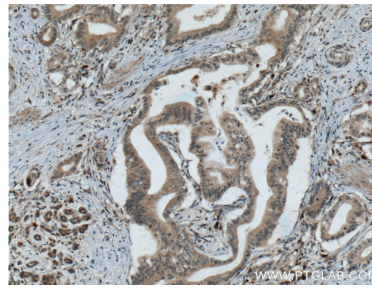
For technical support and original validation data for this product please contact:
T: 1 (888) 4PTGLAB (1-888-478-4522) (toll free in USA), or 1(312) 455-8498 (outside USA) E: proteintech@ptglab.com W: ptglab.com

This product is exclusively available under Proteintech Group brand and is not available to purchase from any other manufacturer.

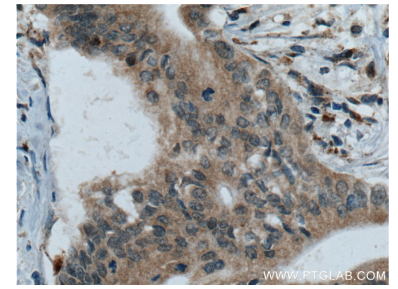
Selected Validation Data



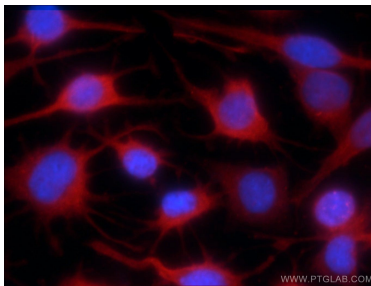
human testis tissue were subjected to SDS PAGE followed by western blot with 60086-1-Ig (RISC antibody) at dilution of 1:1000 incubated at room temperature for 1.5 hours.



Immunohistochemical analysis of paraffin-embedded human pancreas cancer tissue slide using 60086-1-Ig (RISC antibody at dilution of 1:200 (under 10x lens). Heat mediated antigen retrieval with Tris-EDTA buffer (pH 9.0).



Immunohistochemical analysis of paraffin-embedded human pancreas cancer tissue slide using 60086-1-Ig (RISC antibody at dilution of 1:200 (under 40x lens). Heat mediated antigen retrieval with Tris-EDTA buffer (pH 9.0).



Immunofluorescent analysis of C6 cells using 60086-1-Ig (RISC antibody) at dilution of 1:25 and Rhodamine-Goat anti-Mouse IgG.