

For Research Use Only

# ITM2C Monoclonal antibody

Catalog Number: 60095-1-Ig **1 Publications**



## Basic Information

<b>Catalog Number:</b> 60095-1-Ig	<b>GenBank Accession Number:</b> BC025742	<b>Purification Method:</b> Protein A purification
<b>Size:</b> 150ul , Concentration: 2100 µg/ml by Nanodrop and 953 µg/ml by Bradford method using BSA as the standard;	<b>GeneID (NCBI):</b> 81618	<b>CloneNo.:</b> 2E8G11
<b>Source:</b> Mouse	<b>Full Name:</b> integral membrane protein 2C	<b>Recommended Dilutions:</b> IF 1:20-1:200
<b>Isotype:</b> IgG2a	<b>Calculated MW:</b> 230aa,26 kDa; 267aa,30 kDa	
<b>Immunogen Catalog Number:</b> AG4409	<b>Observed MW:</b> 35 kDa	

## Applications

<b>Tested Applications:</b> FC, IF, ELISA	<b>Positive Controls:</b> IF : HepG2 cells,
<b>Cited Applications:</b> FC	
<b>Species Specificity:</b> human	
<b>Cited Species:</b> human	

## Background Information

The Integral membrane protein 2C (ITM2C) is a type II integral transmembrane protein belonging to a family composed of at least two other members, ITM2A and ITM2B. ITM2C, often called transmembrane protein BRI3, is highly expressed in brain tissue. Yeast two-hybrid screen system revealed that BRI3 could interact with beta-secretase beta-amyloid protein converting enzyme (BACE)1 and the microtubule-destabilizing protein SCG10 (STMN2). It may play a role in TNF-induced cell death and neuronal differentiation. BRI3 was found to inhibit the various processing of amyloid precursor protein (APP) by blocking the access of alpha- and beta-secretases to APP, competitive inhibition of APP processing by BRI3 may provide a new approach to Alzheimer disease (AD) therapy and prevention.

## Notable Publications

Author	Pubmed ID	Journal	Application
Noemi Andor	32215369	NAR Genom Bioinform	FC

## Storage

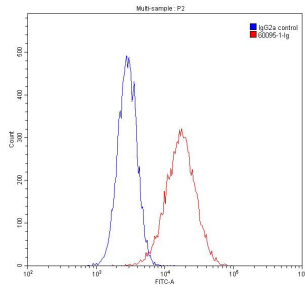
**Storage:**  
Store at -20°C. Stable for one year after shipment.  
**Storage Buffer:**  
PBS with 0.02% sodium azide and 50% glycerol pH 7.3.  
Aliquoting is unnecessary for -20°C storage

\*\*\* 20ul sizes contain 0.1% BSA

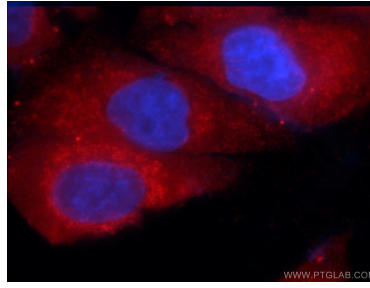
For technical support and original validation data for this product please contact:  
T: 1 (888) 4PTGLAB (1-888-478-4522) (toll free in USA), or 1(312) 455-8498 (outside USA)  
E: proteintech@ptglab.com  
W: ptglab.com

This product is exclusively available under Proteintech Group brand and is not available to purchase from any other manufacturer.

## Selected Validation Data



1X10<sup>6</sup> HepG2 cells were stained with 0.20ug ITM2C antibody (60095-1-Ig, red) and control antibody (blue). Fixed with 90% MeOH.



Immunofluorescent analysis of HepG2 cells using 60095-1-Ig (ITM2C antibody) at dilution of 1:50 and Rhodamine-Goat anti-Mouse IgG.