

For Research Use Only

APOBEC3G Monoclonal antibody

Catalog Number: 60100-1-Ig

Featured Product

2 Publications



Basic Information

Catalog Number: 60100-1-Ig	GenBank Accession Number: BC024268	Purification Method: Protein A purification
Size: 150ul , Concentration: 753 µg/ml by Bradford method using BSA as the standard;	GeneID (NCBI): 60489	CloneNo.: 5G10A8
Source: Mouse	Full Name: apolipoprotein B mRNA editing enzyme, catalytic polypeptide-like 3G	Recommended Dilutions: WB 1:200-1:1000 IHC 1:20-1:200 IF 1:10-1:100
Isotype: IgG2b	Calculated MW: 46 kDa	
Immunogen Catalog Number: AG7770	Observed MW: 46 kDa	

Applications

Tested Applications: IF, IHC, WB, ELISA	Positive Controls: WB : A375 cells, PC-3 cells
Cited Applications: IHC, WB	IHC : human breast cancer tissue,
Species Specificity: human, mouse, rat	IF : C6 cells,
Cited Species: human	

Note-IHC: suggested antigen retrieval with TE buffer pH 9.0; (*) Alternatively, antigen retrieval may be performed with citrate buffer pH 6.0

Background Information

APOBEC3G (apolipoprotein B mRNA-editing enzyme, catalytic polypeptide-like 3G, also known as CEM15), a member of the APOBEC family of cytidine deaminase-editing enzymes, is a potent DNA mutator that can be packaged into budding retroviruses. HA-tagged APOBEC3G can be expressed in 293T cells, which do not express APOBEC3G endogenously, in addition 22- and 24-kDa proteolytic degradation fragments can be detected by western blot (PMID:14672928). It has 2 isoforms produced by alternative splicing.

Notable Publications

Author	Pubmed ID	Journal	Application
Ruidong Chen	28098260	Sci Rep	WB
Huanrong Lan	24753761	Int J Clin Exp Med	IHC

Storage

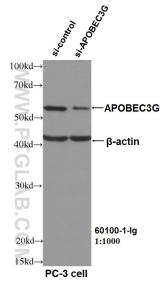
Storage:
Store at -20°C. Stable for one year after shipment.
Storage Buffer:
PBS with 0.02% sodium azide and 50% glycerol pH 7.3.
Aliquoting is unnecessary for -20°C storage

*** 20ul sizes contain 0.1% BSA

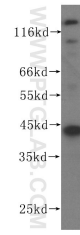
For technical support and original validation data for this product please contact:
T: 1 (888) 4PTGLAB (1-888-478-4522) (toll free in USA), or 1(312) 455-8498 (outside USA)
E: proteintech@ptglab.com
W: ptglab.com

This product is exclusively available under Proteintech Group brand and is not available to purchase from any other manufacturer.

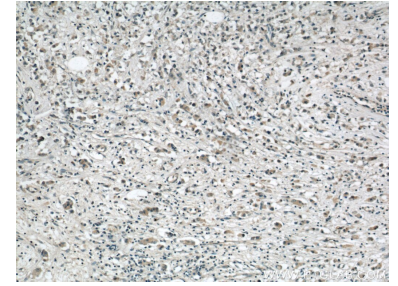
Selected Validation Data



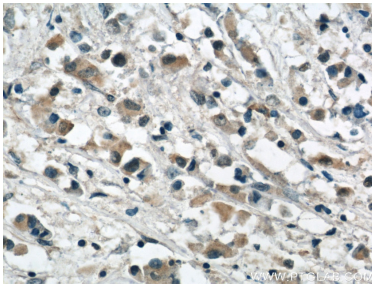
WB result of APOBEC3G antibody (60100-1-Ig, 1:1000) with si-Control and si-APOBEC3G transfected PC-3 cells.



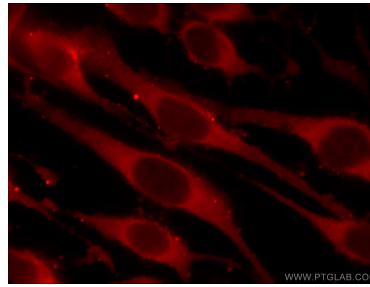
A375 cells were subjected to SDS PAGE followed by western blot with 60100-1-Ig (APOBEC3G antibody) at dilution of 1:200 incubated at room temperature for 1.5 hours.



Immunohistochemical analysis of paraffin-embedded human breast cancer using 60100-1-Ig(APOBEC3G antibody) at dilution of 1:50 (under 10x lens).



Immunohistochemical analysis of paraffin-embedded human breast cancer using 60100-1-Ig(APOBEC3G antibody) at dilution of 1:50 (under 40x lens).



Immunofluorescent analysis of C6 cells using 60100-1-Ig (APOBEC3G antibody) at dilution of 1:25 and Rhodamine-Goat anti-Mouse IgG.