

For Research Use Only

MPV17 Monoclonal antibody

Catalog Number: 60103-1-Ig 1 Publications



Basic Information

Catalog Number: 60103-1-Ig	GenBank Accession Number: BC001115	Purification Method: Caprylic Acid/Ammonium Sulfate Precipitation
Size: 150ul	GeneID (NCBI): 4358	CloneNo.: 3H5H11
Source: Mouse	UNIPROT ID: P39210	Recommended Dilutions: WB 1:200-1:1000 IHC 1:20-1:200
Isotype: IgG1	Full Name: Mpv17 mitochondrial inner membrane protein	
Immunogen Catalog Number: AG0312	Calculated MW: 20 kDa	
	Observed MW: 26 kDa	

Applications

Tested Applications: WB, IHC, ELISA	Positive Controls:
Cited Applications: WB	WB : human heart tissue,
Species Specificity: human	IHC : human liver tissue,
Note-IHC: suggested antigen retrieval with TE buffer pH 9.0; (*) Alternatively, antigen retrieval may be performed with citrate buffer pH 6.0	

Background Information

MPV17, also termed as SYM1, encodes an inner mitochondrial membrane protein. It's potential candidate that may account for the mitochondrial (mt) DNA depletion syndromes (MDDS) characterized by a severe, tissue-specific decrease of mtDNA copy number and ultimate organ failure. It's a human ortholog of the mouse kidney disease gene Mpv17. Absence or malfunction of MPV17 causes oxidative phosphorylation (OXPHOS) failure and mtDNA depletion, not only in affected individuals but also in Mpv17^{-/-} mice. MPV17 contribute to ROS homeostasis, but the downstream signaling is unknown yet. Catalog#60103-1-Ig is a mouse monoclonal antibody raised against the full-length of human MPV17.

Notable Publications

Author	Pubmed ID	Journal	Application
Hans Weiher	26921094	BMC Res Notes	WB

Storage

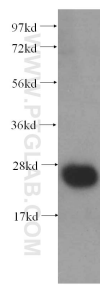
Storage:
Store at -20°C. Stable for one year after shipment.
Storage Buffer:
PBS with 0.1% sodium azide and 50% glycerol pH 7.3.
Aliquoting is unnecessary for -20°C storage

*** 20ul sizes contain 0.1% BSA

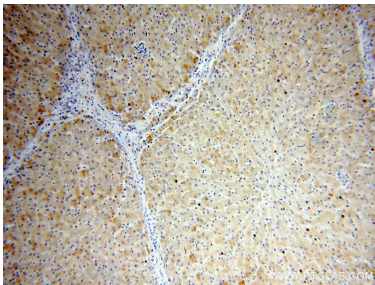
For technical support and original validation data for this product please contact:
T: 1 (888) 4PTGLAB (1-888-478-4522) (toll free in USA), or 1(312) 455-8498 (outside USA)
E: proteintech@ptglab.com
W: ptglab.com

This product is exclusively available under Proteintech Group brand and is not available to purchase from any other manufacturer.

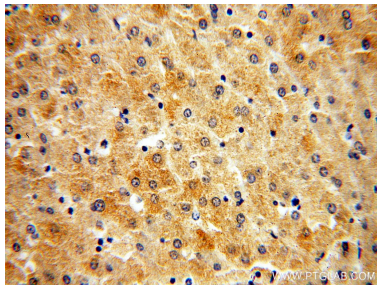
Selected Validation Data



human heart tissue were subjected to SDS PAGE followed by western blot with 60103-1-Ig (MPV17 antibody) at dilution of 1:100 incubated at room temperature for 1.5 hours.



Immunohistochemical analysis of paraffin-embedded human liver using 60103-1-Ig(MPV17 antibody) at dilution of 1:50 (under 10x lens).



Immunohistochemical analysis of paraffin-embedded human liver using 60103-1-Ig(MPV17 antibody) at dilution of 1:50 (under 40x lens).