

For Research Use Only

Fibromodulin Monoclonal antibody, PBS Only



Catalog Number: 60108-1-PBS

Featured Product

Basic Information

Catalog Number:

60108-1-PBS

Size:

100ug , Concentration: 1 mg/ml by
Nanodrop;

Source:

Mouse

Isotype:

IgG1

Immunogen Catalog Number:

AG4030

GenBank Accession Number:

BC035281

GeneID (NCBI):

2331

UNIPROT ID:

Q06828

Full Name:

fibromodulin

Calculated MW:

376 aa, 43 kDa

Purification Method:

Caprylic acid/ammonium sulfate
precipitation

CloneNo.:

3E9D10

Applications

Tested Applications:

IHC, Indirect ELISA

Species Specificity:

human

Background Information

Fibromodulin (FMOD), an extracellular matrix protein, belongs to the small leucine-rich proteoglycan family. Fibromodulin is a collagen-binding protein present in many types of connective tissues, e.g. cartilage, tendon, skin, sclera and cornea (PMID: 2531085). It is involved in fibrillogenesis, cell adhesion, and cytokine activity modulation (PMID: 15741214). Fibromodulin may participate in the assembly of the extracellular matrix as it interacts with type I and type II collagen fibrils and inhibits fibrillogenesis in vitro. It may also regulate TGF-beta activities by sequestering TGF-beta into the extracellular matrix. The calculated molecular mass of fibromodulin is 43 kDa, extracellular fibromodulin appears as one single band of 59 kDa due to glycosylation (PMID: 2531085; 22138190).

Storage

Storage:

Store at -80°C.

Storage Buffer:

PBS Only

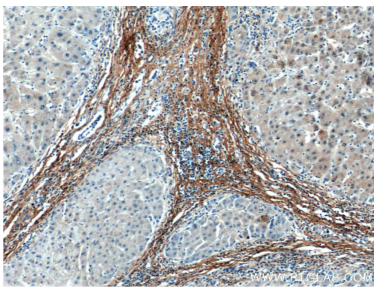
For technical support and original validation data for this product please contact:

T: 1 (888) 4PTGLAB (1-888-478-4522) (toll free
in USA), or 1(312) 455-8498 (outside USA)

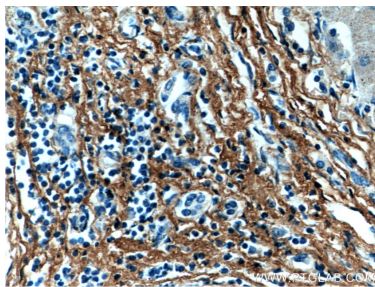
E: proteintech@ptglab.com
W: ptglab.com

This product is exclusively available under Proteintech Group brand and is not available to purchase from any other manufacturer.

Selected Validation Data



Immunohistochemical analysis of paraffin-embedded human hepatocirrhosis tissue slide using 60108-1-Ig (Fibromodulin antibody) at dilution of 1:300 (under 10x lens). This data was developed using the same antibody clone with 60108-1-PBS in a different storage buffer formulation.



Immunohistochemical analysis of paraffin-embedded human hepatocirrhosis tissue slide using 60108-1-Ig (Fibromodulin antibody) at dilution of 1:300 (under 40x lens). This data was developed using the same antibody clone with 60108-1-PBS in a different storage buffer formulation.