

For Research Use Only

# SERPINA10 Monoclonal antibody

Catalog Number: 60113-1-Ig **1 Publications**



## Basic Information

<b>Catalog Number:</b> 60113-1-Ig	<b>GenBank Accession Number:</b> BC022261	<b>Purification Method:</b> Protein A purification
<b>Size:</b> 150ul , Concentration: 1900 ug/ml by Nanodrop and 1000 ug/ml by Bradford method using BSA as the standard;	<b>GeneID (NCBI):</b> 51156	<b>CloneNo.:</b> 5B3C9
<b>Source:</b> Mouse	<b>UNIPROT ID:</b> Q9UK55	<b>Recommended Dilutions:</b> WB 1:1500-1:6000 IHC 1:50-1:500 IF-P 1:200-1:800 IF/ICC 1:400-1:1600
<b>Isotype:</b> IgG2a	<b>Full Name:</b> serpin peptidase inhibitor, clade A (alpha-1 antiproteinase, antitrypsin), member 10	
<b>Immunogen Catalog Number:</b> AG2420	<b>Calculated MW:</b> 444 aa, 51 kDa	
	<b>Observed MW:</b> 51 kDa	

## Applications

<b>Tested Applications:</b> WB, IHC, IF/ICC, IF-P, ELISA	<b>Positive Controls:</b> <b>WB :</b> HepG2 cells, L02 cells, pig liver tissue, rat liver tissue <b>IHC :</b> human liver tissue, <b>IF-P :</b> human liver tissue, <b>IF/ICC :</b> HepG2 cells,
<b>Cited Applications:</b> IHC	
<b>Species Specificity:</b> human, rat, pig	
<b>Cited Species:</b> human	
<b>Note-IHC: suggested antigen retrieval with TE buffer pH 9.0; (*) Alternatively, antigen retrieval may be performed with citrate buffer pH 6.0</b>	

## Background Information

SERPINA10 belongs to the serpin family. It is predominantly expressed in the liver and secreted in plasma. It inhibits the activity of coagulation factors Xa and XIa in the presence of protein Z, calcium and phospholipid. Mutations in this gene are associated with venous thrombosis.

## Notable Publications

Author	Pubmed ID	Journal	Application
Wenwen Guo	34888242	Front Oncol	IHC

## Storage

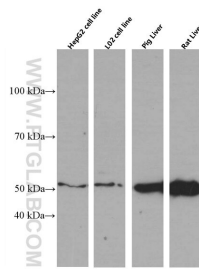
**Storage:**  
Store at -20°C. Stable for one year after shipment.  
**Storage Buffer:**  
PBS with 0.02% sodium azide and 50% glycerol pH 7.3.  
**Aliquoting is unnecessary for -20°C storage**

\*\*\* 20ul sizes contain 0.1% BSA

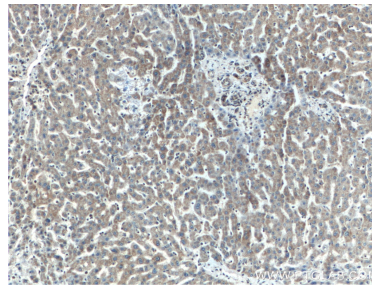
For technical support and original validation data for this product please contact:  
T: 1 (888) 4PTGLAB (1-888-478-4522) (toll free in USA), or 1(312) 455-8498 (outside USA)  
E: proteintech@ptglab.com  
W: ptglab.com

This product is exclusively available under Proteintech Group brand and is not available to purchase from any other manufacturer.

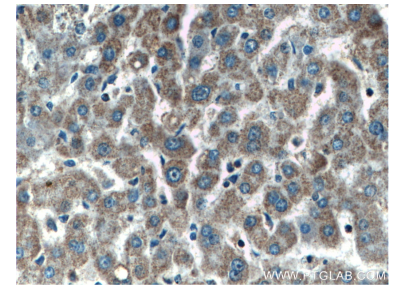
## Selected Validation Data



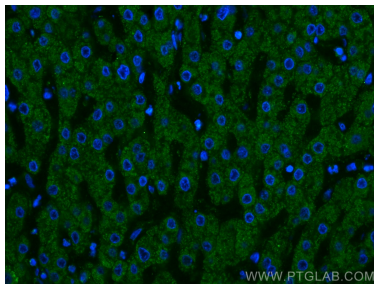
Various lysates were subjected to SDS PAGE followed by western blot with 60113-1-Ig (SERPINA10 antibody) at dilution of 1:3000 incubated at room temperature for 1.5 hours.



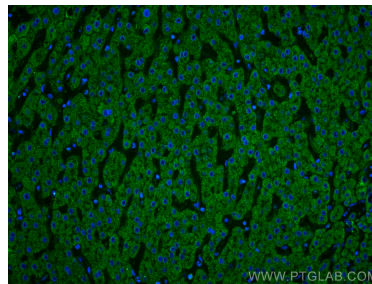
Immunohistochemical analysis of paraffin-embedded human liver tissue slide using 60113-1-Ig (SERPINA10 antibody) at dilution of 1:200 (under 10x lens).



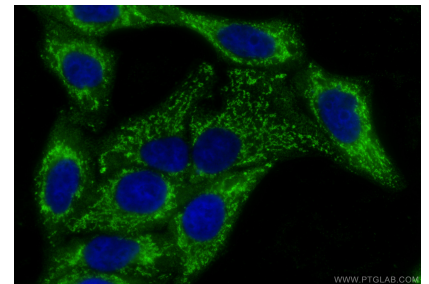
Immunohistochemical analysis of paraffin-embedded human liver tissue slide using 60113-1-Ig (SERPINA10 antibody) at dilution of 1:200 (under 40x lens).



Immunofluorescent analysis of (4% PFA) fixed human liver tissue using SERPINA10 antibody (60113-1-Ig, Clone: 5B3C9) at dilution of 1:400 and CoraLite®488-Conjugated AffiniPure Goat Anti-Mouse IgG(H+L).



Immunofluorescent analysis of (4% PFA) fixed human liver tissue using SERPINA10 antibody (60113-1-Ig, Clone: 5B3C9) at dilution of 1:400 and CoraLite®488-Conjugated AffiniPure Goat Anti-Mouse IgG(H+L).



Immunofluorescent analysis of (-20°C Ethanol) fixed HepG2 cells using SERPINA10 antibody (60113-1-Ig, Clone: 5B3C9) at dilution of 1:800 and CoraLite®488-Conjugated Goat Anti-Mouse IgG(H+L) (SA00013-1).