

For Research Use Only

NR2F6 Monoclonal antibody

Catalog Number: 60117-1-Ig

Featured Product

3 Publications



Basic Information

Catalog Number:

60117-1-Ig

Size:

150ul, Concentration: 493 µg/ml by Bradford method using BSA as the standard;

Source:

Mouse

Isotype:

IgG1

Immunogen Catalog Number:

AG7614

GenBank Accession Number:

BC002669

GeneID (NCBI):

2063

UNIPROT ID:

P10588

Full Name:

nuclear receptor subfamily 2, group F, member 6

Calculated MW:

43 kDa

Observed MW:

42 kDa

Purification Method:

Protein G purification

CloneNo.:

2H2D11

Recommended Dilutions:

WB 1:500-1:2000

IHC 1:20-1:200

Applications

Tested Applications:

WB, IHC, ELISA

Cited Applications:

WB, IHC

Species Specificity:

human

Cited Species:

human

Positive Controls:

WB: MCF-7 cells,

IHC: human kidney tissue,

Note-IHC: suggested antigen retrieval with TE buffer pH 9.0; (*) Alternatively, antigen retrieval may be performed with citrate buffer pH 6.0

Background Information

NR2F6 belongs to NR2F subfamily members, which have their roles in the regulation of neurogenesis, organogenesis, and cellular differentiation during embryonic development [PMID:15875024]. NR2F6 acts as transcription factor by binding to a TGACCT direct-repeat motif and has been established in controlling facets of central nervous system (CNS) [12690040]. It is a nuclear attenuator that directly interferes with DNA binding of NF-AT and, subsequently, transcriptional activity of the NF-AT-dependent IL-17 expression. Otherwise, NR2F6 negatively interfered with transcriptional cytokine responses and acted as a barrier against autoimmunity [PMID:18701084].

Notable Publications

Author	Pubmed ID	Journal	Application
Chunhao Niu	27775588	Int J Mol Sci	WB, IHC
Han Li	30895619	Int J Cancer	IHC
Hyungsoo Kim	37406115	Sci Adv	WB

Storage

Storage:

Store at -20°C. Stable for one year after shipment.

Storage Buffer:

PBS with 0.02% sodium azide and 50% glycerol pH 7.3.

Aliquoting is unnecessary for -20°C storage

*** 20ul sizes contain 0.1% BSA

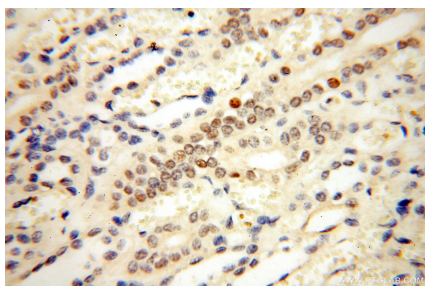
For technical support and original validation data for this product please contact:

T: 1 (888) 4PTGLAB (1-888-478-4522) (toll free in USA), or 1(312) 455-8498 (outside USA)

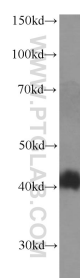
E: proteintech@ptglab.com
W: ptglab.com

This product is exclusively available under Proteintech Group brand and is not available to purchase from any other manufacturer.

Selected Validation Data



Immunohistochemical analysis of paraffin-embedded human kidney using 60117-1-Ig(NR2F6 antibody) at dilution of 1:50 (under 40 \times lens).



MCF-7 cells were subjected to SDS PAGE followed by western blot with 60117-1-Ig (NR2F6 Antibody) at dilution of 1:1000 incubated at room temperature for 1.5 hours.