

For Research Use Only

NR2F6 Monoclonal antibody

Catalog Number: 60117-2-Ig

Featured Product

3 Publications



Basic Information

Catalog Number:

60117-2-Ig

Size:

150ul, Concentration: 1000 ug/ml by Nanodrop;

Source:

Mouse

Isotype:

IgG1

Immunogen Catalog Number:

AG7614

GenBank Accession Number:

BC002669

GeneID (NCBI):

2063

UNIPROT ID:

P10588

Full Name:

nuclear receptor subfamily 2, group F, member 6

Calculated MW:

43 kDa

Observed MW:

43 kDa

Purification Method:

Protein A purification

CloneNo.:

2H2B8

Recommended Dilutions:

WB 1:2000-1:10000

IHC 1:50-1:500

Applications

Tested Applications:

WB, IHC, ELISA

Cited Applications:

WB

Species Specificity:

human, rat

Cited Species:

human

Note-IHC: suggested antigen retrieval with TE buffer pH 9.0; (*) Alternatively, antigen retrieval may be performed with citrate buffer pH 6.0

Positive Controls:

WB : HCT 116 cells, HeLa cells, HT-29 cells, LNCaP cells, MCF-7 cells, HEK-293 cells, K-562 cells, HSC-T6 cells

IHC : human ovary tumor tissue, human kidney tissue

Background Information

NR2F6 belongs to NR2F subfamily members, which have their roles in the regulation of neurogenesis, organogenesis, and cellular differentiation during embryonic development (PMID:15875024). NR2F6 acts as transcription factor by binding to a TGACCT direct-repeat motif and has been established in controlling facets of central nervous system (CNS) (PMID: 12690040). It is a nuclear attenuator that directly interferes with DNA binding of NF-AT and, subsequently, transcriptional activity of the NF-AT-dependent IL-17 expression. Otherwise, NR2F6 negatively interfered with transcriptional cytokine responses and acted as a barrier against autoimmunity (PMID:18701084).

Notable Publications

Author	Pubmed ID	Journal	Application
Victoria Klepsch	29670099	Nat Commun	WB
Ji Won Lee	38132359	Biology (Basel)	WB
Hyungsoo Kim	37406115	Sci Adv	WB

Storage

Storage:

Store at -20°C. Stable for one year after shipment.

Storage Buffer:

PBS with 0.02% sodium azide and 50% glycerol, pH7.3

Aliquoting is unnecessary for -20°C storage

*** 20ul sizes contain 0.1% BSA

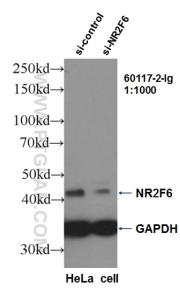
For technical support and original validation data for this product please contact:

T: 1 (888) 4PTGLAB (1-888-478-4522) (toll free in USA), or 1(312) 455-8498 (outside USA)

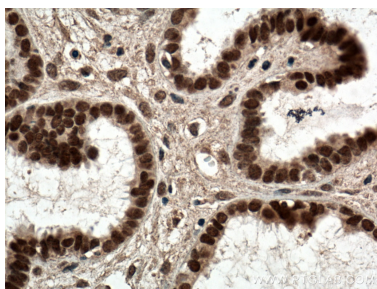
E: proteintech@ptglab.com
W: ptglab.com

This product is exclusively available under Proteintech Group brand and is not available to purchase from any other manufacturer.

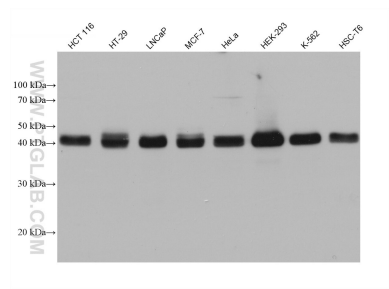
Selected Validation Data



WB result of NR2F6 antibody (60117-2-Ig, 1:1000) with si-Control and si-NR2F6 transfected HeLa cells.



Immunohistochemical analysis of paraffin-embedded human ovary tumor tissue slide using 60117-2-Ig (NR2F6 antibody) at dilution of 1:200 (under 40x lens. Heat mediated antigen retrieval with Tris-EDTA buffer (pH 9.0).



Various lysates were subjected to SDS PAGE followed by western blot with 60117-2-Ig (NR2F6 antibody) at dilution of 1:10000 incubated at room temperature for 1.5 hours.