

For Research Use Only

NR2F6 Monoclonal antibody, PBS Only

Catalog Number: 60117-2-PBS

Featured Product



Basic Information

Catalog Number:

60117-2-PBS

Size:

100ug, Concentration: 1mg/ml by Nanodrop;

Source:

Mouse

Isotype:

IgG1

Immunogen Catalog Number:

AG7614

GenBank Accession Number:

BC002669

GeneID (NCBI):

2063

UNIPROT ID:

P10588

Full Name:

nuclear receptor subfamily 2, group F, member 6

Calculated MW:

43 kDa

Observed MW:

43 kDa

Purification Method:

Protein A purification

CloneNo.:

2H2B8

Applications

Tested Applications:

WB, IHC, Indirect ELISA

Species Specificity:

human, rat

Background Information

NR2F6 belongs to NR2F subfamily members, which have their roles in the regulation of neurogenesis, organogenesis, and cellular differentiation during embryonic development (PMID:15875024). NR2F6 acts as transcription factor by binding to a TGACCT direct-repeat motif and has been established in controlling facets of central nervous system (CNS) (PMID: 12690040). It is a nuclear attenuator that directly interferes with DNA binding of NF-AT and, subsequently, transcriptional activity of the NF-AT-dependent IL-17 expression. Otherwise, NR2F6 negatively interfered with transcriptional cytokine responses and acted as a barrier against autoimmunity (PMID:18701084).

Storage

Storage:

Store at -80°C.

Storage Buffer:

PBS Only

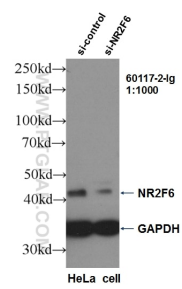
For technical support and original validation data for this product please contact:

T: 1 (888) 4PTGLAB (1-888-478-4522) (toll free in USA), or 1(312) 455-8498 (outside USA)

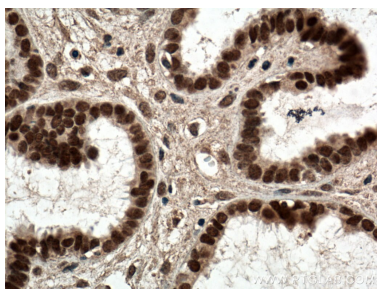
E: proteintech@ptglab.com
W: ptglab.com

This product is exclusively available under Proteintech Group brand and is not available to purchase from any other manufacturer.

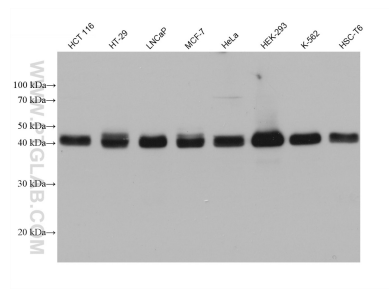
Selected Validation Data



WB result of NR2F6 antibody (60117-2-Ig, 1:1000) with si-Control and si-NR2F6 transfected HeLa cells. This data was developed using the same antibody clone with 60117-2-PBS in a different storage buffer formulation.



Immunohistochemical analysis of paraffin-embedded human ovary tumor tissue slide using 60117-2-Ig (NR2F6 antibody) at dilution of 1:200 (under 40x lens. Heat mediated antigen retrieval with Tris-EDTA buffer (pH 9.0). This data was developed using the same antibody clone with 60117-2-PBS in a different storage buffer formulation.



Various lysates were subjected to SDS PAGE followed by western blot with 60117-2-Ig (NR2F6 antibody) at dilution of 1:10000 incubated at room temperature for 1.5 hours. This data was developed using the same antibody clone with 60117-2-PBS in a different storage buffer formulation.