

For Research Use Only

# CXCL16 Monoclonal antibody, PBS Only (Detector)



Catalog Number: 60123-1-PBS

Featured Product

## Basic Information

<b>Catalog Number:</b> 60123-1-PBS	<b>GenBank Accession Number:</b> BC017588	<b>Purification Method:</b> Protein A purification
<b>Size:</b> 100ug , Concentration: 1mg/ml by Nanodrop;	<b>GeneID (NCBI):</b> 58191	<b>CloneNo.:</b> 2H7B3
<b>Source:</b> Mouse	<b>UNIPROT ID:</b> Q9H2A7	
<b>Isotype:</b> IgG2a	<b>Full Name:</b> chemokine (C-X-C motif) ligand 16	
<b>Immunogen Catalog Number:</b> AG4883	<b>Calculated MW:</b> 273 aa, 30 kDa	
	<b>Observed MW:</b> 35 kDa, 60 kDa	

## Applications

**Tested Applications:**  
WB, Cytometric bead array, Indirect ELISA

**Species Specificity:**  
human, mouse

## Product Information

60123-1-PBS targets CXCL16 as part of a matched antibody pair:

MP51127-1: 60123-2-PBS capture and 60123-1-PBS detection (validated in Cytometric bead array)

Unconjugated mouse monoclonal antibody pair in PBS only (BSA and azide free) storage buffer at a concentration of 1 mg/mL, ready for conjugation.

This conjugation ready format makes antibodies ideal for use in many applications including: ELISAs, multiplex assays requiring matched pairs, mass cytometry, and multiplex imaging applications. Antibody use should be optimized by the end user for each application and assay.

## Background Information

CXCL16 is a recently discovered cytokine belonging to the CXC chemokine family, which is synthesised in plasmacytoid dendritic cell as a transmembrane molecule. It exists in a transmembrane and soluble form. The transmembrane form of CXCL16 functions as an adhesion molecule for CXCR6-expressing cells, whereas the soluble form of CXCL16 mediates infiltration of circulating cells into sites of injury. CXCL16, has been proposed as an important pathogenic mediator in inflammatory diseases, including rheumatoid arthritis, glomerulonephritis, or prostate cancer. CXCL16 has been implicated in some forms of renal disease such as lupus nephritis and antglomerular basement membrane nephritis. CXCL16 also plays a pivotal role in the pathogenesis of angiotensin II-induced renal injury and fibrosis through regulation of macrophage and T cell infiltration and bone marrow-derived fibroblast accumulation.

## Storage

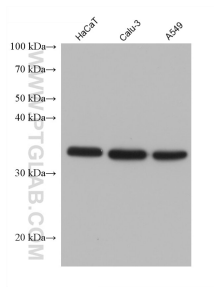
**Storage:**  
Store at -80°C.

**Storage Buffer:**  
PBS Only

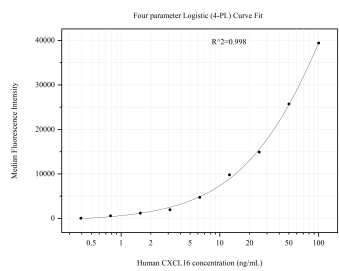
For technical support and original validation data for this product please contact:  
T: 1 (888) 4PTGLAB (1-888-478-4522) (toll free in USA), or 1(312) 455-8498 (outside USA)  
E: [proteintech@ptglab.com](mailto:proteintech@ptglab.com)  
W: [ptglab.com](http://ptglab.com)

This product is exclusively available under Proteintech Group brand and is not available to purchase from any other manufacturer.

## Selected Validation Data



Various lysates were subjected to SDS PAGE followed by western blot with 60123-1-Ig (CXCL16 antibody) at dilution of 1:1000 incubated at room temperature for 1.5 hours. This data was developed using the same antibody clone with 60123-1-PBS in a different storage buffer formulation.



Cytometric bead array standard curve of MP51127-1, CXCL16 Monoclonal Matched Antibody Pair, PBS Only. Capture antibody: 60123-2-PBS. Detection antibody: 60123-1-PBS. Standard: Ag4883. Range: 0.391-100 ng/mL.