

For Research Use Only

# RABEP2 Monoclonal antibody

Catalog Number: 60125-1-Ig

Featured Product



## Basic Information

Catalog Number:

60125-1-Ig

Size:

150ul, Concentration: 1400 ug/ml by Nanodrop and 1000 ug/ml by Bradford method using BSA as the standard;

Source:

Mouse

Isotype:

IgG1

Immunogen Catalog Number:

AG6197

GenBank Accession Number:

BC058900

GeneID (NCBI):

79874

UNIPROT ID:

Q9H5N1

Full Name:

rabaptin, RAB GTPase binding effector protein 2

Calculated MW:

64 kDa

Observed MW:

62 kDa

Purification Method:

Protein A purification

CloneNo.:

1A4A4

Recommended Dilutions:

WB 1:500-1:1000

IHC 1:50-1:500

## Applications

Tested Applications:

WB, IHC, ELISA

Species Specificity:

human, rat, pig

**Note-IHC: suggested antigen retrieval with TE buffer pH 9.0; (\*) Alternatively, antigen retrieval may be performed with citrate buffer pH 6.0**

Positive Controls:

WB : HSC-T6 cells, Jurkat cells, PC-3 cells

IHC : human prostate cancer tissue, human breast cancer tissue

## Background Information

RABEP2, also named as RABPT5B, plays a role in membrane trafficking and in homotypic early endosome fusion. It has two isoforms with MW 59-63 kDa.

## Storage

Storage:

Store at -20°C. Stable for one year after shipment.

Storage Buffer:

PBS with 0.02% sodium azide and 50% glycerol pH 7.3.

Aliquoting is unnecessary for -20°C storage

\*\*\* 20ul sizes contain 0.1% BSA

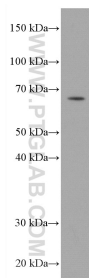
For technical support and original validation data for this product please contact:

T: 1 (888) 4PTGLAB (1-888-478-4522) (toll free in USA), or 1(312) 455-8498 (outside USA)

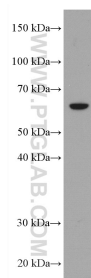
E: [proteintech@ptglab.com](mailto:proteintech@ptglab.com)  
W: [ptglab.com](http://ptglab.com)

This product is exclusively available under Proteintech Group brand and is not available to purchase from any other manufacturer.

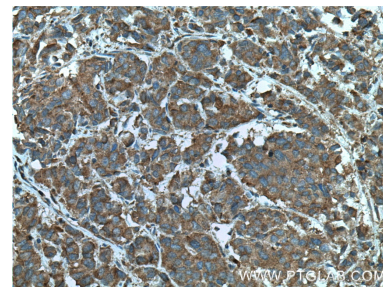
## Selected Validation Data



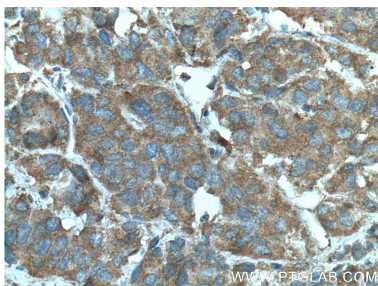
Jurkat cells were subjected to SDS PAGE followed by western blot with 60125-1-Ig (RABEP2 antibody) at dilution of 1:1000 incubated at room temperature for 1.5 hours.



HSC-T6 cells were subjected to SDS PAGE followed by western blot with 60125-1-Ig (RABEP2 antibody) at dilution of 1:1000 incubated at room temperature for 1.5 hours.



Immunohistochemical analysis of paraffin-embedded human prostate cancer tissue slide using 60125-1-Ig (RABEP2 antibody) at dilution of 1:100 (under 10x lens. Heat mediated antigen retrieval with Tris-EDTA buffer (pH 9.0).



Immunohistochemical analysis of paraffin-embedded human prostate cancer tissue slide using 60125-1-Ig (RABEP2 antibody) at dilution of 1:100 (under 40x lens. Heat mediated antigen retrieval with Tris-EDTA buffer (pH 9.0).