

For Research Use Only

# RABEP2 Monoclonal antibody

Catalog Number: 60125-1-Ig **Featured Product**



## Basic Information

<b>Catalog Number:</b> 60125-1-Ig	<b>GenBank Accession Number:</b> BC058900	<b>Purification Method:</b> Protein A purification
<b>Size:</b> 150ul , Concentration: 1400 µg/ml by Nanodrop and 1000 µg/ml by Bradford method using BSA as the standard;	<b>GeneID (NCBI):</b> 79874	<b>CloneNo.:</b> 1A4A4
<b>Source:</b> Mouse	<b>Full Name:</b> rabaptin, RAB GTPase binding effector protein 2	<b>Recommended Dilutions:</b> WB 1:500-1:1000 IHC 1:50-1:500
<b>Isotype:</b> IgG1	<b>Calculated MW:</b> 64 kDa	
<b>Immunogen Catalog Number:</b> AG6197	<b>Observed MW:</b> 62 kDa	

## Applications

<b>Tested Applications:</b> IHC, WB, ELISA	<b>Positive Controls:</b>
<b>Species Specificity:</b> human, rat, pig	<b>WB :</b> HSC-T6 cells, Jurkat cells, PC-3 cells
<b>Note-IHC: suggested antigen retrieval with TE buffer pH 9.0; (*) Alternatively, antigen retrieval may be performed with citrate buffer pH 6.0</b>	<b>IHC :</b> human prostate cancer tissue, human breast cancer tissue

## Background Information

RABEP2, also named as RABPT5B, plays a role in membrane trafficking and in homotypic early endosome fusion. It has two isoforms with MW 59-63 kDa.

## Storage

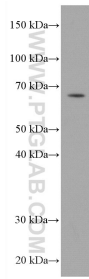
**Storage:**  
Store at -20°C. Stable for one year after shipment.  
**Storage Buffer:**  
PBS with 0.02% sodium azide and 50% glycerol pH 7.3.  
Aliquoting is unnecessary for -20°C storage

\*\*\* 20ul sizes contain 0.1% BSA

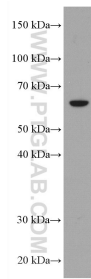
For technical support and original validation data for this product please contact:  
T: 1 (888) 4PTGLAB (1-888-478-4522) (toll free in USA), or 1(312) 455-8498 (outside USA)  
E: proteintech@ptglab.com  
W: ptglab.com

This product is exclusively available under Proteintech Group brand and is not available to purchase from any other manufacturer.

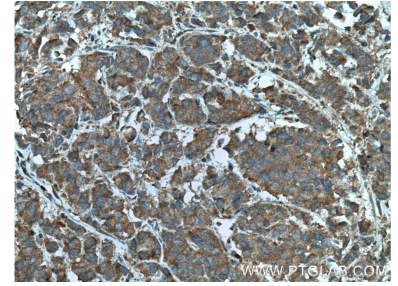
## Selected Validation Data



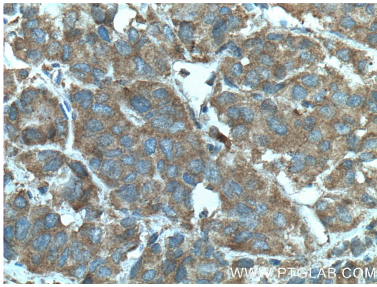
Jurkat cells were subjected to SDS PAGE followed by western blot with 60125-1-Ig (RABEP2 antibody) at dilution of 1:1000 incubated at room temperature for 1.5 hours.



HSC-T6 cells were subjected to SDS PAGE followed by western blot with 60125-1-Ig (RABEP2 antibody) at dilution of 1:1000 incubated at room temperature for 1.5 hours.



Immunohistochemical analysis of paraffin-embedded human prostate cancer tissue slide using 60125-1-Ig (RABEP2 antibody) at dilution of 1:100 (under 10x lens. Heat mediated antigen retrieval with Tris-EDTA buffer (pH 9.0).



Immunohistochemical analysis of paraffin-embedded human prostate cancer tissue slide using 60125-1-Ig (RABEP2 antibody) at dilution of 1:100 (under 40x lens. Heat mediated antigen retrieval with Tris-EDTA buffer (pH 9.0).