

For Research Use Only

RENALASE Monoclonal antibody, PBS Only



Catalog Number: 60128-1-PBS

Basic Information

Catalog Number: 60128-1-PBS	GenBank Accession Number: BC005364	Purification Method: Protein G purification
Size: 100ug , Concentration: 1 mg/ml by Nanodrop;	GeneID (NCBI): 55328	CloneNo.: 3A12F5
Source: Mouse	UNIPROT ID: Q5VYX0	
Isotype: IgG1	Full Name: chromosome 10 open reading frame 59	
Immunogen Catalog Number: AG13061	Calculated MW: 38 kDa	
	Observed MW: 38 kDa	

Applications

Tested Applications:
WB, IHC, Indirect ELISA

Species Specificity:
human

Background Information

RNLS, also named as Renalase, C10orf59 and MAO-C, belongs to the renalase family. It is probable FAD-dependent amine oxidase secreted by the kidney, which circulates in blood and modulates cardiac function and systemic blood pressure. RNLS degrades catecholamines such as dopamine, norepinephrine and epinephrine in vitro. It lowers blood pressure in vivo by decreasing cardiac contractility and heart rate and preventing a compensatory increase in peripheral vascular tone, suggesting a causal link to the increased plasma catecholamine and heightened cardiovascular risk. High concentrations of catecholamines activate plasma renalase and promotes its secretion and synthesis. RNLS has physiologically relevant catecholamine-oxidizing activity. (PMID:15841207) This antibody is specific to RNLS.

Storage

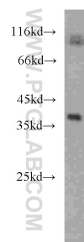
Storage:
Store at -80°C.

Storage Buffer:
PBS Only

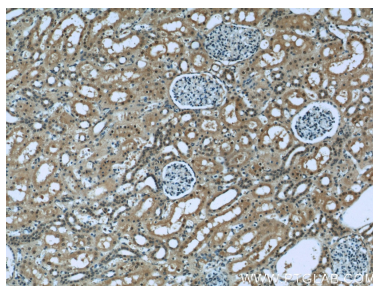
For technical support and original validation data for this product please contact:
T: 1 (888) 4PTGLAB (1-888-478-4522) (toll free in USA), or 1(312) 455-8498 (outside USA)
E: proteintech@ptglab.com
W: ptglab.com

This product is exclusively available under Proteintech Group brand and is not available to purchase from any other manufacturer.

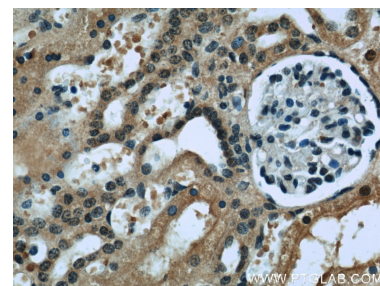
Selected Validation Data



human heart tissue were subjected to SDS PAGE followed by western blot with 60128-1-Ig (RENALASE antibody) at dilution of 1:2000 incubated at room temperature for 1.5 hours. This data was developed using the same antibody clone with 60128-1-PBS in a different storage buffer formulation.



Immunohistochemical analysis of paraffin-embedded human kidney slide using 60128-1-Ig (RENALASE Antibody) at dilution of 1:50. This data was developed using the same antibody clone with 60128-1-PBS in a different storage buffer formulation.



Immunohistochemical analysis of paraffin-embedded human kidney slide using 60128-1-Ig (RENALASE Antibody) at dilution of 1:50. This data was developed using the same antibody clone with 60128-1-PBS in a different storage buffer formulation.