

For Research Use Only

Gastroke 1 Monoclonal antibody, PBS Only



Catalog Number: 60130-1-PBS

Basic Information

Catalog Number: 60130-1-PBS	GenBank Accession Number: BC059778	Purification Method: Protein A purification
Size: 100ug, Concentration: 1 mg/ml by Nanodrop;	GeneID (NCBI): 56287	CloneNo.: 3C10E3
Source: Mouse	UNIPROT ID: Q9NS71	
Isotype: IgG2a	Full Name: gastroke 1	
Immunogen Catalog Number: AG6091	Calculated MW: 22 kDa	
	Observed MW: 22 kDa	

Applications

Tested Applications:
WB, IF, IHC, Indirect ELISA

Species Specificity:
human, rat, pig, mouse

Background Information

Gastroke 1 (GKN1), a stomach-specific protein also known as 18 kDa antrum mucosa protein (AMP-18) or foveolin, belongs to the gastroke family of gastric mucus cell-secreted proteins. The human GKN1 gene has been localized in a region of chromosome 2p13 of about 6 kb and contains 6 exons. GKN1 is expressed only in normal human stomach, but is absent from gastric adenocarcinomas, gastro-esophageal adenocarcinoma cell lines, and other normal and tumor gastro-intestinal tissues. GKN1 may play an important role in normal gastric function and may be a gastric tumour suppressor.

Storage

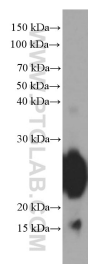
Storage:
Store at -80°C.

Storage Buffer:
PBS Only

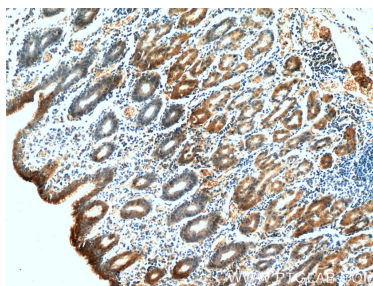
For technical support and original validation data for this product please contact:
T: 1 (888) 4PTGLAB (1-888-478-4522) (toll free in USA), or 1(312) 455-8498 (outside USA)
E: proteintech@ptglab.com
W: ptglab.com

This product is exclusively available under Proteintech Group brand and is not available to purchase from any other manufacturer.

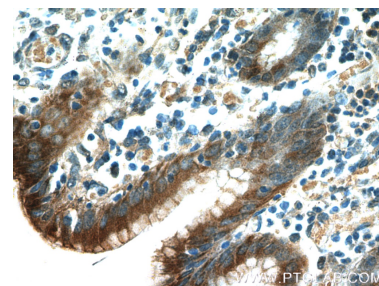
Selected Validation Data



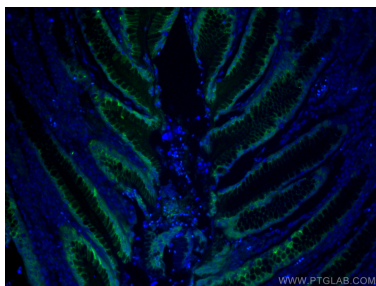
human stomach tissue were subjected to SDS PAGE followed by western blot with 60130-1-Ig (GKN1 Antibody) at dilution of 1:20000 incubated at room temperature for 1.5 hours. This data was developed using the same antibody clone with 60130-1-PBS in a different storage buffer formulation.



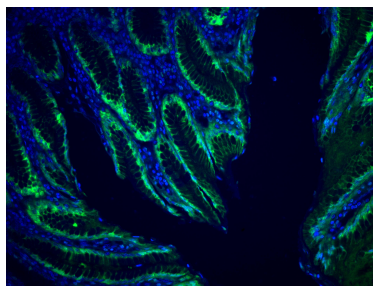
Immunohistochemical analysis of paraffin-embedded human stomach tissue slide using 60130-1-Ig (GKN1 Antibody) at dilution of 1:200 (under 10x lens). This data was developed using the same antibody clone with 60130-1-PBS in a different storage buffer formulation.



Immunohistochemical analysis of paraffin-embedded human stomach tissue slide using 60130-1-Ig (GKN1 Antibody) at dilution of 1:200 (under 40x lens). This data was developed using the same antibody clone with 60130-1-PBS in a different storage buffer formulation.



Immunofluorescent analysis of (4% PFA) fixed human stomach tissue using Gastrokine 1 antibody (60130-1-Ig, Clone: 3C10E3) at dilution of 1:400 and CoraLite®488-Conjugated AffiniPure Goat Anti-Mouse IgG(H+L). This data was developed using the same antibody clone with 60130-1-PBS in a different storage buffer formulation.



Immunofluorescent analysis of (4% PFA) fixed human stomach tissue using Gastrokine 1 antibody (60130-1-Ig, Clone: 3C10E3) at dilution of 1:400 and CoraLite®488-Conjugated AffiniPure Goat Anti-Mouse IgG(H+L). This data was developed using the same antibody clone with 60130-1-PBS in a different storage buffer formulation.