

For Research Use Only

Chromogranin A Monoclonal antibody

Catalog Number: 60135-2-Ig **6 Publications**



Basic Information

Catalog Number: 60135-2-Ig	GenBank Accession Number: BC006459	Purification Method: Protein A purification
Size: 150ul , Concentration: 1000 ug/ml by Nanodrop;	GeneID (NCBI): 1113	CloneNo.: 2A7D11
Source: Mouse	UNIPROT ID: P10645	Recommended Dilutions: WB 1:2000-1:10000 IHC 1:1000-1:4000 IF-P 1:200-1:800 IF/ICC 1:200-1:800
Isotype: IgG1	Full Name: chromogranin A (parathyroid secretory protein 1)	
Immunogen Catalog Number: AG0807	Calculated MW: 51 kDa	
	Observed MW: 70-75 kDa	

Applications

Tested Applications: WB, IHC, IF/ICC, IF-P, ELISA	Positive Controls: WB : rat adrenal gland tissue, SH-SY5Y cells IHC : human pancreas cancer tissue, human colon tissue IF-P : human pancreas cancer tissue, IF/ICC : Neuro-2a cells,
Cited Applications: WB, IF	
Species Specificity: human, mouse, rat, pig	
Cited Species: human, mouse, rat, sheep	
Note-IHC: suggested antigen retrieval with TE buffer pH 9.0; (*) Alternatively, antigen retrieval may be performed with citrate buffer pH 6.0	

Background Information

Chromogranin A is a member of the granin family of neuroendocrine secretory proteins. It is located in secretory vesicles of neurons and endocrine cells. Chromogranin A is the precursor to several functional peptides including vasostatin, pancreastatin, catestatin and parastatin. These peptides negatively modulate the neuroendocrine function of the releasing cell (autocrine) or nearby cells (paracrine). CgA is one of the most used tumor markers in NET's (neuroendocrine tumors), and elevated CgA concentrations have been demonstrated in serum or plasma of patients with different types of these tumors.

Notable Publications

Author	Pubmed ID	Journal	Application
Yalan Xu	35841025	Stem Cell Res Ther	IF
Hongyu Wang	39940725	Int J Mol Sci	IF
Hongjia Li	38287961	Front Microbiol	IF

Storage

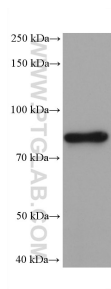
Storage:
Store at -20°C. Stable for one year after shipment.
Storage Buffer:
PBS with 0.02% sodium azide and 50% glycerol, pH7.3
Aliquoting is unnecessary for -20°C storage

*** 20ul sizes contain 0.1% BSA

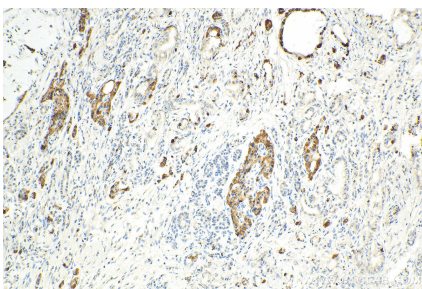
For technical support and original validation data for this product please contact:
T: 1 (888) 4PTGLAB (1-888-478-4522) (toll free in USA), or 1(312) 455-8498 (outside USA)
E: proteintech@ptglab.com
W: ptglab.com

This product is exclusively available under Proteintech Group brand and is not available to purchase from any other manufacturer.

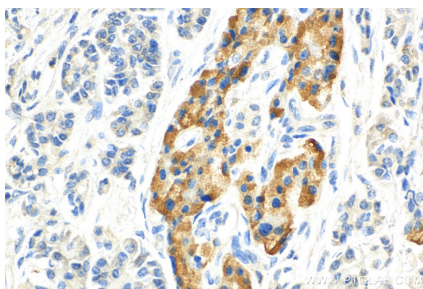
Selected Validation Data



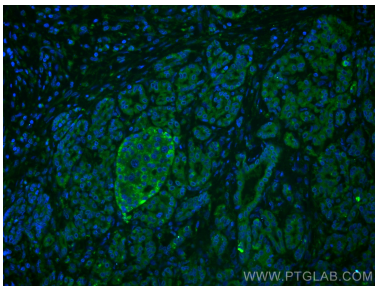
rat adrenal gland tissue were subjected to SDS PAGE followed by western blot with 60135-2-Ig (Chromogranin A antibody) at dilution of 1:5000 incubated at room temperature for 1.5 hours.



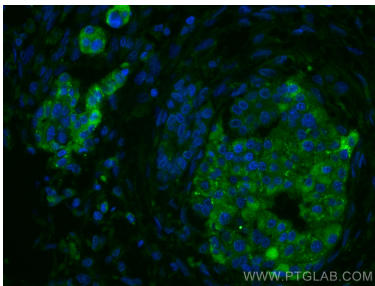
Immunohistochemical analysis of paraffin-embedded human pancreas cancer tissue slide using 60135-2-Ig (CHGA antibody) at dilution of 1:2000 (under 10x lens). Heat mediated antigen retrieval with Tris-EDTA buffer (pH 9.0).



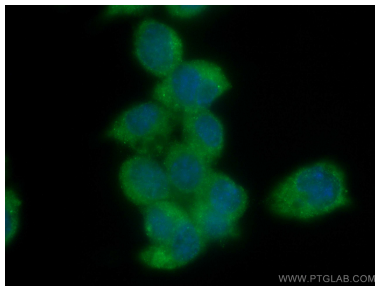
Immunohistochemical analysis of paraffin-embedded human pancreas cancer tissue slide using 60135-2-Ig (CHGA antibody) at dilution of 1:2000 (under 40x lens). Heat mediated antigen retrieval with Tris-EDTA buffer (pH 9.0).



Immunofluorescent analysis of (4% PFA) fixed human pancreas cancer tissue using Chromogranin A antibody (60135-2-Ig, Clone: 2A7D11) at dilution of 1:400 and CoraLite®488-Conjugated Goat Anti-Mouse IgG(H+L).



Immunofluorescent analysis of (4% PFA) fixed human pancreas cancer tissue using Chromogranin A antibody (60135-2-Ig, Clone: 2A7D11) at dilution of 1:400 and CoraLite®488-Conjugated Goat Anti-Mouse IgG(H+L).



Immunofluorescent analysis of (-20°C Methanol) fixed Neuro-2a cells using Chromogranin A antibody (60135-2-Ig, Clone: 2A7D11) at dilution of 1:400 and CoraLite®488-Conjugated Goat Anti-Mouse IgG(H+L).