

## IL-15RA Monoclonal antibody

Catalog Number: 60138-1-Ig

## Basic Information

<b>Catalog Number:</b> 60138-1-Ig	<b>GenBank Accession Number:</b> BC107777	<b>Purification Method:</b> Protein G purification
<b>Size:</b> 150ul , Concentration: 1715 ug/ml by Nanodrop and 1000 ug/ml by Bradford method using BSA as the standard;	<b>GeneID (NCBI):</b> 3601	<b>CloneNo.:</b> 5E3E1
<b>Source:</b> Mouse	<b>UNIPROT ID:</b> Q13261	<b>Recommended Dilutions:</b> WB 1:1000-1:6000
<b>Isotype:</b> IgG1	<b>Full Name:</b> interleukin 15 receptor, alpha	
<b>Immunogen Catalog Number:</b> AG10200	<b>Calculated MW:</b> 231 aa, 24 kDa	
	<b>Observed MW:</b> 55 kDa	

## Applications

<b>Tested Applications:</b> WB, ELISA	<b>Positive Controls:</b> WB : Raji cells, Daudi cells, HeLa cells
<b>Species Specificity:</b> human	

## Background Information

Interleukin-15 (IL-15) is a pleiotropic cytokine that plays an important role in both innate and adaptive immunity. IL-15 is mainly produced by activated monocytes, macrophages and dendritic cells, and is structurally similar to IL-2 (PMID: 8178155; 12401478). These two cytokines share the same IL-2/15R $\beta$  and common  $\gamma$ -chain receptor subunits. In addition, IL-2 and IL-15 have their own private  $\alpha$ -chain receptor subunit, IL-2R $\alpha$  and IL-15R $\alpha$ , respectively (PMID: 7641685). The IL-15R $\alpha$  chain is expressed by many cell types including monocytes, DCs, NK, T cells and fibroblasts. Several isoforms of IL-15R $\alpha$  exist and are generated either by alternative splicing or by proteolytic cleavage (PMID: 10480910; 15265897). The calculated molecular weight of full-length IL-15R $\alpha$  is 28 kDa, IL-15R $\alpha$  can be glycosylated, and larger apparent molecular weights of 55-65 kDa have been reported by some researches (PMID: 10480910; 15976182; 15671076; 17912462).

## Storage

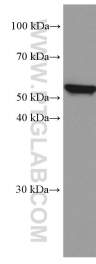
**Storage:**  
Store at -20°C. Stable for one year after shipment.  
**Storage Buffer:**  
PBS with 0.02% sodium azide and 50% glycerol, pH7.3  
 Aliquoting is unnecessary for -20°C storage

\*\*\* 20ul sizes contain 0.1% BSA

For technical support and original validation data for this product please contact:  
 T: 1 (888) 4PTGLAB (1-888-478-4522) (toll free in USA), or 1(312) 455-8498 (outside USA)  
 E: [proteintech@ptglab.com](mailto:proteintech@ptglab.com)  
 W: [ptglab.com](http://ptglab.com)

This product is exclusively available under Proteintech Group brand and is not available to purchase from any other manufacturer.

## Selected Validation Data



Raji cells were subjected to SDS PAGE followed by western blot with 60138-1-Ig (IL15RA antibody) at dilution of 1:3000 incubated at room temperature for 1.5 hours.