

For Research Use Only

CXCL8/IL-8 Monoclonal antibody

Catalog Number: 60141-1-Ig **8 Publications**



Basic Information

Catalog Number: 60141-1-Ig	GenBank Accession Number: BC013615	Purification Method: Caprylic acid/ammonium sulfate precipitation
Size: 150ul , Concentration: 500 µg/ml by Bradford method using BSA as the standard;	GeneID (NCBI): 3576	CloneNo.: 3C4E2
Source: Mouse	Full Name: interleukin 8	
Isotype: IgG1	Calculated MW: 99 aa, 11 kDa	
Immunogen Catalog Number: AG10552		

Applications

Tested Applications:
IHC, WB, ELISA

Cited Applications:
IHC, WB

Species Specificity:
human

Cited Species:
human

Background Information

Notable Publications

Author	Pubmed ID	Journal	Application
Alisson Clemenceau	32967276	Cancers (Basel)	IHC
Mirette Hanna	29102166	Cytokine	IHC
Danielle Larouche	27903840	Integr Cancer Ther	

Storage

Storage:
Store at -20°C. Stable for one year after shipment.

Storage Buffer:
PBS with 0.02% sodium azide and 50% glycerol pH 7.3.

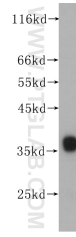
Aliquoting is unnecessary for -20°C storage

*** 20ul sizes contain 0.1% BSA

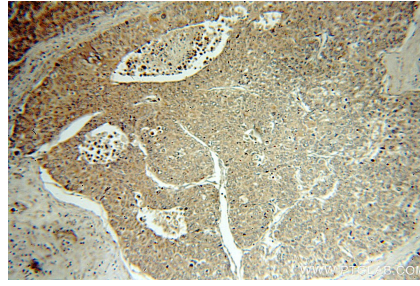
For technical support and original validation data for this product please contact:
T: 1 (888) 4PTGLAB (1-888-478-4522) (toll free in USA), or 1(312) 455-8498 (outside USA)
E: proteintech@ptglab.com
W: ptglab.com

This product is exclusively available under Proteintech Group brand and is not available to purchase from any other manufacturer.

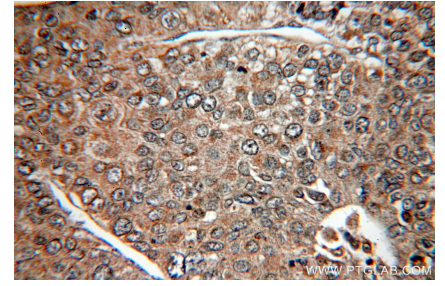
Selected Validation Data



Recombinant protein were subjected to SDS PAGE followed by western blot with 60141-1-Ig (IL8/CXCL8 antibody) at dilution of 1:500 incubated at room temperature for 1.5 hours.



Immunohistochemical analysis of paraffin-embedded human liver cancer using 60141-1-Ig(IL8/CXCL8 antibody) at dilution of 1:50 (under 10x lens).



Immunohistochemical analysis of paraffin-embedded human liver cancer using 60141-1-Ig(IL8/CXCL8 antibody) at dilution of 1:50 (under 40x lens).