

CXCL8/IL-8 Monoclonal antibody, PBS Only (Detector)

Catalog Number: 60141-2-PBS

Basic Information

Catalog Number: 60141-2-PBS	GenBank Accession Number: BC013615	Purification Method: Protein A purification
Size: 100ug , Concentration: 1mg/ml by Nanodrop;	GeneID (NCBI): 3576	CloneNo.: 3D11D5
Source: Mouse	ENSEMBL Gene ID: ENSG00000169429	
Isotype: IgG2a	UNIPROT ID: P10145	
Immunogen Catalog Number: AG10552	Full Name: interleukin 8	
	Calculated MW: 99 aa, 11 kDa	

Applications

Tested Applications:
Sandwich ELISA, Indirect ELISA, Sample test

Species Specificity:
human

Product Information

60141-2-PBS targets CXCL8/IL-8 as part of a matched antibody pair:

MP50089-1: 68744-1-PBS capture and 60141-2-PBS detection (validated in Sandwich ELISA)

Unconjugated mouse monoclonal antibody pair in PBS only (BSA and azide free) storage buffer at a concentration of 1 mg/mL, ready for conjugation.

This conjugation ready format makes antibodies ideal for use in many applications including: ELISAs, multiplex assays requiring matched pairs, mass cytometry, and multiplex imaging applications. Antibody use should be optimized by the end user for each application and assay.

Background Information

Interleukin 8 (IL-8), also known as CXCL8, which is a member of the CXC chemokine family. This chemokine is secreted by a variety of cell types including monocyte/macrophages, T cells, neutrophils, fibroblasts, endothelial cells, and various tumor cell lines in response to inflammatory stimuli. IL-8 has two primary functions. It induces chemotaxis in target cells, primarily neutrophils but also other granulocytes, causing them to migrate toward the site of infection. IL-8 also induces phagocytosis once they have arrived. This gene is believed to play a role in the pathogenesis of bronchiolitis, a common respiratory tract disease caused by viral infection. IL-8 is also known to be a potent promoter of angiogenesis. IL-8 has been associated with tumor angiogenesis, metastasis, and poor prognosis in breast cancer. IL-8 may present a novel therapeutic target for estrogen driven breast carcinogenesis and tumor progression. The human IL-8 cDNA sequence predicts a protein of 99 amino acids. Removal of a 22-residue signal peptide generates a mature protein of 77 amino acids (~ 8 kDa).

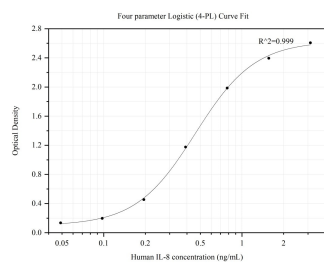
Storage

Storage:
Store at -80°C.
Storage Buffer:
PBS Only

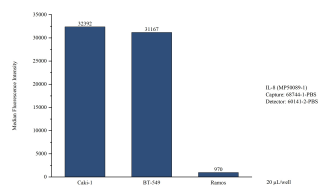
For technical support and original validation data for this product please contact:
T: 1 (888) 4PTGLAB (1-888-478-4522) (toll free in USA), or 1(312) 455-8498 (outside USA)
E: proteintech@ptglab.com
W: ptglab.com

This product is exclusively available under Proteintech Group brand and is not available to purchase from any other manufacturer.

Selected Validation Data



Sandwich ELISA standard curve of MP50089-1, CXCL8/IL-8 Monoclonal Matched Antibody Pair, PBS Only. Capture antibody: 68744-1-PBS. Detection antibody: HRP-conjugated 60141-2-PBS. Standard: HZ-1318. Range: 0.049-3.125 ng/mL.



Cytometric bead array of cell line supernatant using MP50089-1, CXCL8/IL-8 Monoclonal Matched Antibody Pair, PBS Only. Capture antibody: 68744-1-PBS. Detection antibody: 60141-2-PBS. Supernatant (20µL/well) from the following cell lines were assayed: Caki-1, BT-549, Ramos.