

For Research Use Only

RAB31-specific Monoclonal antibody

Catalog Number: 60146-1-Ig



Basic Information

Catalog Number:

60146-1-Ig

Size:

150ul, Concentration: 1000 µg/ml by Bradford method using BSA as the standard;

Source:

Mouse

Isotype:

IgG2b

GenBank Accession Number:

NM_006868

GeneID (NCBI):

11031

UNIPROT ID:

Q13636

Full Name:

RAB31, member RAS oncogene family

Calculated MW:

22 kDa

Purification Method:

Caprylic Acid/Ammonium Sulfate Precipitation

CloneNo.:

5C1E9

Applications

Tested Applications:

WB, IHC, ELISA

Species Specificity:

human, mouse

Background Information

RAB 31, also named as RAB22b, belongs to small GTP-binding proteins of the RAB family. Rab31 localizes in the trans-Golgi network (TGN) and endosomes. It is required for transport of mannose 6-phosphate receptors (MPRs) from the trans-Golgi network (TGN) to endosomes. This antibody can bind RAB31 specifically, and not react RAB22a.

Storage

Storage:

Store at -20°C. Stable for one year after shipment.

Storage Buffer:

PBS with 0.02% sodium azide and 50% glycerol pH 7.3.

Aliquoting is unnecessary for -20°C storage

*** 20ul sizes contain 0.1% BSA

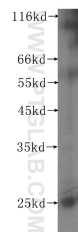
For technical support and original validation data for this product please contact:

T: 1 (888) 4PTGLAB (1-888-478-4522) (toll free in USA), or 1(312) 455-8498 (outside USA)

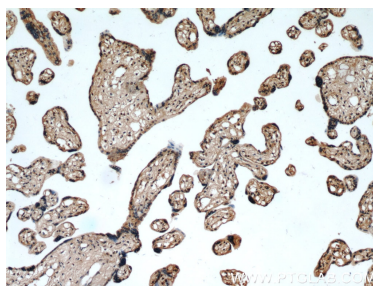
E: proteintech@ptglab.com
W: ptglab.com

This product is exclusively available under Proteintech Group brand and is not available to purchase from any other manufacturer.

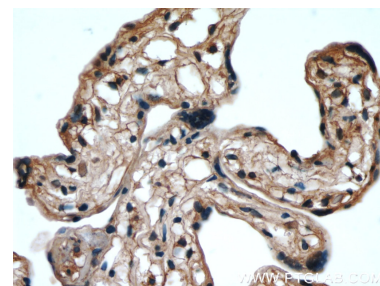
Selected Validation Data



mouse colon tissue were subjected to SDS PAGE followed by western blot with 60146-1-Ig (RAB31-specific antibody) at dilution of 1:200 incubated at room temperature for 1.5 hours.



Immunohistochemical analysis of paraffin-embedded human placenta using 60146-1-Ig (RAB31-specific antibody) at dilution of 1:50 (under 10x lens).



Immunohistochemical analysis of paraffin-embedded human placenta using 60146-1-Ig (RAB31-specific antibody) at dilution of 1:50 (under 40x lens).