

For Research Use Only

ABCD1 Monoclonal antibody

Catalog Number: 60153-1-Ig

Featured Product

1 Publications



Basic Information

Catalog Number:

60153-1-Ig

Size:

150ul, Concentration: 1900 ug/ml by 215

Nanodrop and 1000 ug/ml by Bradford

method using BSA as the standard;

Source:

Mouse

Isotype:

IgG1

Immunogen Catalog Number:

AG12757

GenBank Accession Number:

BC025358

GeneID (NCBI):

215

UNIPROT ID:

P33897

Full Name:

ATP-binding cassette, sub-family D

(ALD), member 1

Calculated MW:

745 aa, 83 kDa

Observed MW:

75 kDa

Purification Method:

Protein G purification

CloneNo.:

1H8E5

Recommended Dilutions:

WB: 1:500-1:2000

IF/ICC: 1:50-1:500

Applications

Tested Applications:

WB, IF/ICC, ELISA

Species Specificity:

human

Positive Controls:

WB: HeLa cells,

IF/ICC: HeLa cells,

Background Information

ABCD1 (also known as ALDP) is a member of the ATP-binding cassette (ABC) transporter superfamily which functions as transporter for a wide variety of substrates. It localizes to the peroxisomal membrane. The exact function is not clear so far. Various mutations of ABCD1 cause X-linked adrenoleukodystrophy (X-ALD), an inherited neurodegenerative disease affecting the nervous system white matter and adrenal cortex.

Notable Publications

Author	Pubmed ID	Journal	Application
Desh Raj	39695325	EMBO Rep	

Storage

Storage:

Store at -20°C. Stable for one year after shipment.

Storage Buffer:

PBS with 0.02% sodium azide and 50% glycerol, pH7.3

Aliquoting is unnecessary for -20°C storage

*** 20ul sizes contain 0.1% BSA

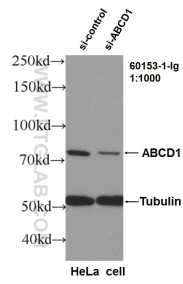
For technical support and original validation data for this product please contact:

T: 1 (888) 4PTGLAB (1-888-478-4522) (toll free in USA), or 1(312) 455-8498 (outside USA)

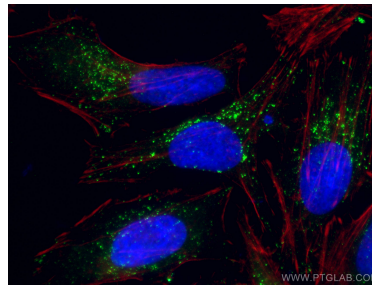
E: proteintech@ptglab.com
W: ptglab.com

This product is exclusively available under Proteintech Group brand and is not available to purchase from any other manufacturer.

Selected Validation Data



WB result of ABCD1 antibody (60153-1-Ig, 1:1000) with si-Control and si-ABCD1 transfected HeLa cells.



Immunofluorescent analysis of (-20°C Ethanol) fixed HeLa cells using ABCD1 antibody (60153-1-Ig, Clone: 1H8E5) at dilution of 1:100 and CoraLite® 488-Conjugated AffiniPure Goat Anti-Mouse IgG(H+L). DAPI (blue).