

For Research Use Only

ABCD1 Monoclonal antibody, PBS Only



Catalog Number: 60153-1-PBS

Featured Product

Basic Information

Catalog Number:

60153-1-PBS

Size:

100ug, Concentration: 1 mg/ml by Nanodrop;

Source:

Mouse

Isotype:

IgG1

Immunogen Catalog Number:

AG12757

GenBank Accession Number:

BC025358

GeneID (NCBI):

215

UNIPROT ID:

P33897

Full Name:

ATP-binding cassette, sub-family D (ALD), member 1

Calculated MW:

745 aa, 83 kDa

Observed MW:

75 kDa

Purification Method:

Protein A purification

CloneNo.:

1H8E5

Applications

Tested Applications:

WB, IF, Indirect ELISA

Species Specificity:

human

Background Information

ABCD1 (also known as ALDP) is a member of the ATP-binding cassette (ABC) transporter superfamily which functions as transporter for a wide variety of substrates. It localizes to the peroxisomal membrane. The exact function is not clear so far. Various mutations of ABCD1 cause X-linked adrenoleukodystrophy (X-ALD), an inherited neurodegenerative disease affecting the nervous system white matter and adrenal cortex.

Storage

Storage:

Store at -80°C.

Storage Buffer:

PBS Only

For technical support and original validation data for this product please contact:

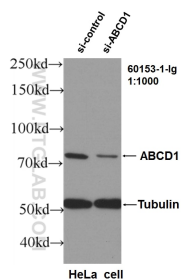
T: 1 (888) 4PTGLAB (1-888-478-4522) (toll free in USA), or 1(312) 455-8498 (outside USA)

E: proteintech@ptglab.com

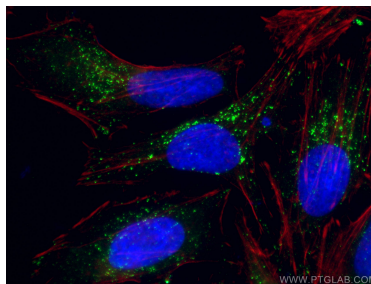
W: ptglab.com

This product is exclusively available under Proteintech Group brand and is not available to purchase from any other manufacturer.

Selected Validation Data



WB result of ABCD1 antibody (60153-1-Ig, 1:1000) with si-Control and si-ABCD1 transfected HeLa cells. This data was developed using the same antibody clone with 60153-1-PBS in a different storage buffer formulation.



Immunofluorescent analysis of (-20°C Ethanol) fixed HeLa cells using ABCD1 antibody (60153-1-Ig, Clone: 1H8E5) at dilution of 1:100 and CoraLite®488-Conjugated AffiniPure Goat Anti-Mouse IgG(H+L).DAPI (blue). This data was developed using the same antibody clone with 60153-1-PBS in a different storage buffer formulation.