

For Research Use Only

EPHA1-specific Monoclonal antibody

Catalog Number: 60155-2-Ig **1 Publications**



Basic Information

Catalog Number: 60155-2-Ig	GenBank Accession Number: BC130291	Purification Method: Caprylic acid/ammonium sulfate precipitation
Size: 150ul , Concentration: 1100 ug/ml by Nanodrop and 1000 ug/ml by Bradford method using BSA as the standard;	GeneID (NCBI): 2041	CloneNo.: 1B7C3
Source: Mouse	UNIPROT ID: P21709	Recommended Dilutions: WB 1:1000-1:6000 IHC 1:50-1:500
Isotype: IgG1	Full Name: EPH receptor A1	
	Calculated MW: 108 kDa	
	Observed MW: 108 kDa	

Applications

Tested Applications: WB, IHC, ELISA	Positive Controls: WB : HeLa cells, COLO 320 cells, HepG2 cells
Cited Applications: WB	IHC : human breast cancer tissue, human liver cancer tissue, human stomach cancer tissue
Species Specificity: human	
Cited Species: human	
Note-IHC: suggested antigen retrieval with TE buffer pH 9.0; (*) Alternatively, antigen retrieval may be performed with citrate buffer pH 6.0	

Background Information

EPHA1, also named as EPH, EPHT and EPHT1, belongs to ephrin receptor subfamily of the protein-tyrosine kinase family. EPH and EPH-related receptors have been implicated in mediating developmental events, particularly in the nervous system. Receptors in the EPH subfamily typically have a single kinase domain and an extracellular region containing a Cys-rich domain and 2 fibronectin type III repeats. Ligands in the ephrin-A subclass, including the prototype family member ephrin-A1 (B61), are membrane associated through glycosylphosphatidyl-inositol linkages, whereas ephrin-B subclass consists of ligands with transmembrane domains. The general role of the Eph family is in mediating repulsive cell-cell interaction.

Notable Publications

Author	Pubmed ID	Journal	Application
Renjie Wang	37389689	Metab Brain Dis	WB

Storage

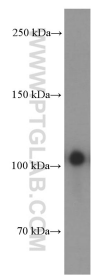
Storage:
Store at -20°C. Stable for one year after shipment.
Storage Buffer:
PBS with 0.02% sodium azide and 50% glycerol pH 7.3.
Aliquoting is unnecessary for -20°C storage

*** 20ul sizes contain 0.1% BSA

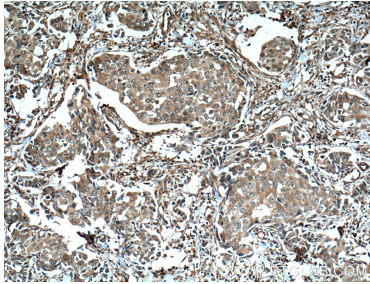
For technical support and original validation data for this product please contact:
T: 1 (888) 4PTGLAB (1-888-478-4522) (toll free in USA), or 1(312) 455-8498 (outside USA)
E: proteintech@ptglab.com
W: ptglab.com

This product is exclusively available under Proteintech Group brand and is not available to purchase from any other manufacturer.

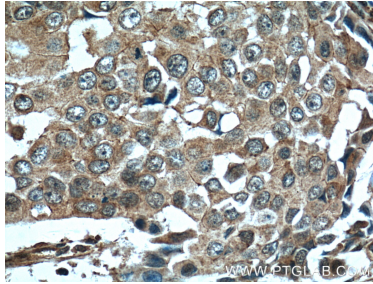
Selected Validation Data



HeLa cells were subjected to SDS PAGE followed by western blot with 60155-2-Ig (EPHA1-specific antibody at dilution of 1:3000 incubated at room temperature for 1.5 hours.



Immunohistochemical analysis of paraffin-embedded human breast cancer tissue slide using 60155-2-Ig (EPHA1-specific antibody at dilution of 1:200 (under 10x lens). Heat mediated antigen retrieval with Tris-EDTA buffer (pH 9.0).



Immunohistochemical analysis of paraffin-embedded human breast cancer tissue slide using 60155-2-Ig (EPHA1-specific antibody at dilution of 1:200 (under 40x lens). Heat mediated antigen retrieval with Tris-EDTA buffer (pH 9.0).