

For Research Use Only

Luciferase Monoclonal antibody

Catalog Number: 60158-1-Ig **2 Publications**



Basic Information

Catalog Number: 60158-1-Ig	GenBank Accession Number: AY015993	Purification Method: Caprylic acid/ammonium sulfate precipitation
Size: 150ul , Concentration: 1000 µg/ml by Bradford method using BSA as the standard;	GeneID (NCBI): Full Name:	CloneNo.: 1F2C12
Source: Mouse	Calculated MW: 20 kDa	Recommended Dilutions: WB 1:500-1:3000
Isotype: IgG2a		
Immunogen Catalog Number: AG13000		

Applications

Tested Applications: WB, ELISA	Positive Controls: WB : Recombinant protein,
Cited Applications: WB	
Species Specificity:	
Cited Species: human, mouse	

Background Information

Luciferase is a generic term for the class of oxidative enzymes used in bioluminescence and is distinct from a photoprotein. The immunogen of this antibody the luciferase (AY015993) from the copepod marine organism *Gaussia princeps*. This antibody is a McAb to Luciferase.

Notable Publications

Author	Pubmed ID	Journal	Application
Yuanjun Zhu	36793212	Mol Ther	WB
Maria Merezko	24932508	PLoS One	WB

Storage

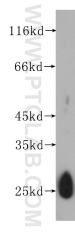
Storage:
Store at -20°C. Stable for one year after shipment.
Storage Buffer:
PBS with 0.02% sodium azide and 50% glycerol pH 7.3.
Aliquoting is unnecessary for -20°C storage

*** 20ul sizes contain 0.1% BSA

For technical support and original validation data for this product please contact:
T: 1 (888) 4PTGLAB (1-888-478-4522) (toll free in USA), or 1(312) 455-8498 (outside USA)
E: proteintech@ptglab.com
W: ptglab.com

This product is exclusively available under Proteintech Group brand and is not available to purchase from any other manufacturer.

Selected Validation Data



Recombinant protein were subjected to SDS PAGE followed by western blot with 60158-1-Ig (dNGLUC antibody) at dilution of 1:1500 incubated at room temperature for 1.5 hours.