

For Research Use Only

SNAP25 Monoclonal antibody, PBS Only



Catalog Number: 60159-1-PBS

Basic Information

Catalog Number: 60159-1-PBS	GenBank Accession Number: BC010647	Purification Method: Protein A purification
Size: 100ug , Concentration: 1 mg/ml by Nanodrop;	GeneID (NCBI): 6616	CloneNo.: 3E4B7
Source: Mouse	UNIPROT ID: P60880	
Isotype: IgG2b	Full Name: synaptosomal-associated protein, 25kDa	
Immunogen Catalog Number: AG6695	Calculated MW: 23 kDa	
	Observed MW: 25-30 kDa	

Applications

Tested Applications:
WB, IP, IF, IHC, Indirect ELISA

Species Specificity:
human, mouse, rat, pig

Background Information

The synaptosomal associated protein of 25 kD (SNAP-25) was first identified as a major synaptic protein by Wilson and colleagues. The protein interacts with syntaxin and synaptobrevin through its N-terminal and C-terminal - helical domains. Its palmitoylation domain is located in the middle of the molecule that contains four cysteine residues. Mutation of the cysteines abolishes palmitoylation and membrane binding. Several elegant studies using synaptosome preparations and permeabilized PC12 cells have suggested that SNAP-25 may act in the late post-docking steps of exocytosis. By limited proteolysis and in vitro binding assay, it is proposed that the two helix domains act independently and contribute equally to form the SNARE complex with syntaxin and synaptobrevin. It seems that a major regulatory element is located in the C-terminus of SNAP-25. Removing a 9 amino acid sequence of SNAP-25 inhibited neurosecretion in chromaffin cells.

Storage

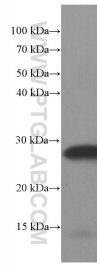
Storage:
Store at -80°C.

Storage Buffer:
PBS Only

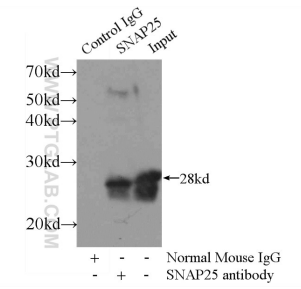
For technical support and original validation data for this product please contact:
T: 1 (888) 4PTGLAB (1-888-478-4522) (toll free in USA), or 1(312) 455-8498 (outside USA)
E: proteintech@ptglab.com
W: ptglab.com

This product is exclusively available under Proteintech Group brand and is not available to purchase from any other manufacturer.

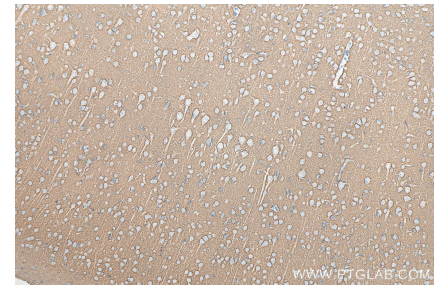
Selected Validation Data



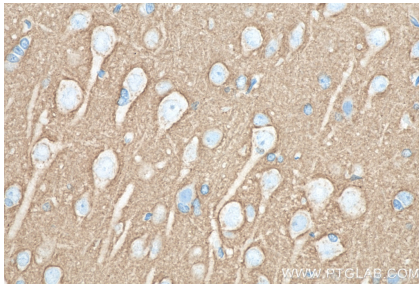
pig brain tissue were subjected to SDS PAGE followed by western blot with 60159-1-Ig (SNAP25 antibody) at dilution of 1:10000 incubated at room temperature for 1.5 hours. This data was developed using the same antibody clone with 60159-1-PBS in a different storage buffer formulation.



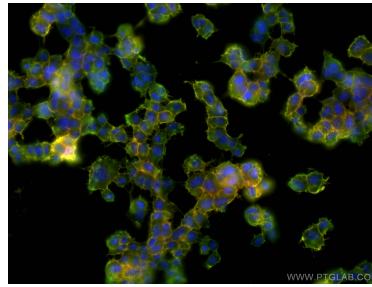
IP result of anti-SNAP25 (IP:60159-1-Ig, 3ug; Detection:60159-1-Ig 1:500) with mouse brain tissue lysate 3600ug. This data was developed using the same antibody clone with 60159-1-PBS in a different storage buffer formulation.



Immunohistochemical analysis of paraffin-embedded rat brain tissue slide using 60159-1-Ig (SNAP25 antibody) at dilution of 1:2000 (under 10x lens). Heat mediated antigen retrieval with Tris-EDTA buffer (pH 9.0). This data was developed using the same antibody clone with 60159-1-PBS in a different storage buffer formulation.



Immunohistochemical analysis of paraffin-embedded rat brain tissue slide using 60159-1-Ig (SNAP25 antibody) at dilution of 1:2000 (under 40x lens). Heat mediated antigen retrieval with Tris-EDTA buffer (pH 9.0). This data was developed using the same antibody clone with 60159-1-PBS in a different storage buffer formulation.



Immunofluorescent analysis of (-20°C Ethanol) fixed PC-12 cells using SNAP25 antibody (60159-1-Ig, Clone: 3E4B7) at dilution of 1:1000 and Coralite®594-Conjugated AffiniPure Goat Anti-Mouse IgG(H+L), SNAP25 antibody (14903-1-AP, green). This data was developed using the same antibody clone with 60159-1-PBS in a different storage buffer formulation.