

For Research Use Only

MSH2 Monoclonal antibody

Catalog Number: 60161-1-Ig

Featured Product

1 Publications



Basic Information

Catalog Number: 60161-1-Ig	GenBank Accession Number: BC021566	Purification Method: Protein A purification
Size: 150ul , Concentration: 1000 µg/ml by Nanodrop and 1000 µg/ml by Bradford method using BSA as the standard;	GeneID (NCBI): 4436	CloneNo.: 2H5F5
Source: Mouse	Full Name: mutS homolog 2, colon cancer, nonpolyposis type 1 (E. coli)	Recommended Dilutions: IHC 1:20-1:200
Isotype: IgG1	Calculated MW: 105 kDa	
Immunogen Catalog Number: AG7835	Observed MW: 105 kDa	

Applications

Tested Applications: IHC, WB, ELISA	Positive Controls: IHC : human colon cancer tissue,
Cited Applications: IHC	
Species Specificity: human	
Cited Species: mouse	
Note-IHC: suggested antigen retrieval with TE buffer pH 9.0; (*) Alternatively, antigen retrieval may be performed with citrate buffer pH 6.0	

Background Information

MSH2, named for its homologous to the E.coli MutS gene, takes part in DNA mismatch repair(MMR) to maintain the stability of DNA. MSH2 contains a helix-turn-helix domain, which responds for binding to DNA. Also, MSH2 has a direct role in mutation avoidance and micro-satellite stability in cell.

Notable Publications

Author	Pubmed ID	Journal	Application
Qijing Wu	34933913	Cancer Immunol Res	IHC

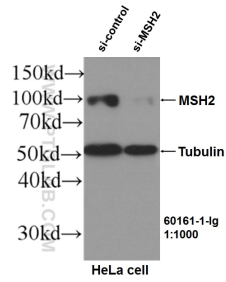
Storage

Storage:
Store at -20°C. Stable for one year after shipment.
Storage Buffer:
PBS with 0.02% sodium azide and 50% glycerol pH 7.3.
Aliquoting is unnecessary for -20°C storage

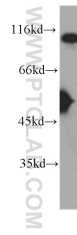
For technical support and original validation data for this product please contact:
T: 1 (888) 4PTGLAB (1-888-478-4522) (toll free in USA), or 1(312) 455-8498 (outside USA)
E: proteintech@ptglab.com
W: ptglab.com

This product is exclusively available under Proteintech Group brand and is not available to purchase from any other manufacturer.

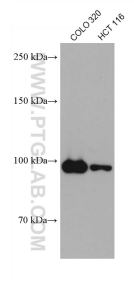
Selected Validation Data



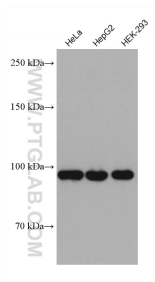
WB results of MSH2 (60161-1-Ig, 1:1000) antibody with si-Control and si-MSH2 transfected HeLa cells..



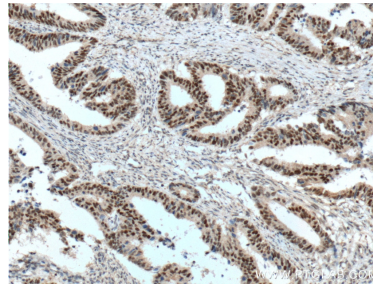
COLO 320 cells were subjected to SDS PAGE followed by western blot with 60161-1-Ig (MSH2 antibody) at dilution of 1:1000 incubated at room temperature for 1.5 hours.



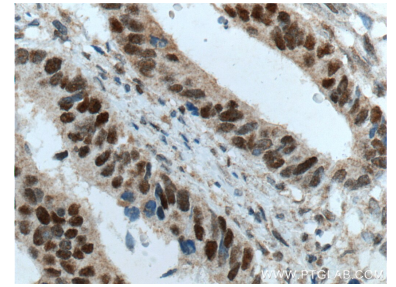
Various lysates were subjected to SDS PAGE followed by western blot with 60161-1-Ig (MSH2 antibody) at dilution of 1:10000 incubated at room temperature for 1.5 hours.



Various lysates were subjected to SDS PAGE followed by western blot with 60161-1-Ig (MSH2 antibody) at dilution of 1:10000 incubated at room temperature for 1.5 hours.



Immunohistochemical analysis of paraffin-embedded human colon cancer tissue slide using 60161-1-Ig (MSH2 Antibody) at dilution of 1:800 (under 10x lens). Heat mediated antigen retrieval with Tris-EDTA buffer (pH 9.0).



Immunohistochemical analysis of paraffin-embedded human colon cancer tissue slide using 60161-1-Ig (MSH2 Antibody) at dilution of 1:800 (under 40x lens). Heat mediated antigen retrieval with Tris-EDTA buffer (pH 9.0).