

For Research Use Only

# MSH2 Monoclonal antibody, PBS Only (Capture)

Catalog Number: 60161-1-PBS

Featured Product



## Basic Information

Catalog Number:

60161-1-PBS

Size:

100ug, Concentration: 1mg/ml by Nanodrop;

Source:

Mouse

Isotype:

IgG1

Immunogen Catalog Number:

AG7835

GenBank Accession Number:

BC021566

GeneID (NCBI):

4436

UNIPROT ID:

P43246

Full Name:

mutS homolog 2, colon cancer, nonpolyposis type 1 (E. coli)

Calculated MW:

105 kDa

Observed MW:

105 kDa

Purification Method:

Protein A purification

CloneNo.:

2H5F5

## Applications

Tested Applications:

WB, IHC, IF/ICC, Cytometric bead array, Sandwich ELISA, Indirect ELISA, Sample test

Species Specificity:

human

## Product Information

60161-1-PBS targets MSH2 as part of a matched antibody pair.

MP50235-1: 60161-1-PBS capture and 60161-2-PBS detection (validated in Cytometric bead array, Sandwich ELISA)

Unconjugated mouse monoclonal antibody pair in PBS only (BSA and azide free) storage buffer at a concentration of 1 mg/mL, ready for conjugation.

This conjugation ready format makes antibodies ideal for use in many applications including: ELISAs, multiplex assays requiring matched pairs, mass cytometry, and multiplex imaging applications. Antibody use should be optimized by the end user for each application and assay.

## Background Information

MSH2, named for its homologous to the E.coli MutS gene, takes part in DNA mismatch repair(MMR) to maintain the stability of DNA. MSH2 contains a helix-turn-helix domain, which responds for binding to DNA. Also, MSH2 has a direct role in mutation avoidance and micro-satellite stability in cell.

## Storage

Storage:

Store at -80°C.

Storage Buffer:

PBS Only

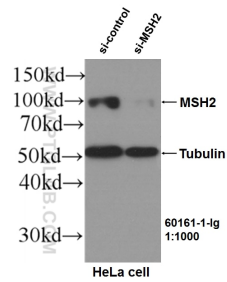
For technical support and original validation data for this product please contact:

T: 1 (888) 4PTGLAB (1-888-478-4522) (toll free in USA), or 1(312) 455-8498 (outside USA)

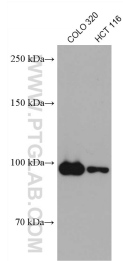
E: [proteintech@ptglab.com](mailto:proteintech@ptglab.com)  
W: [ptglab.com](http://ptglab.com)

This product is exclusively available under Proteintech Group brand and is not available to purchase from any other manufacturer.

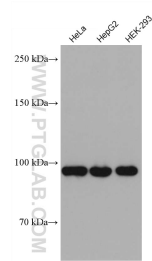
Selected Validation Data



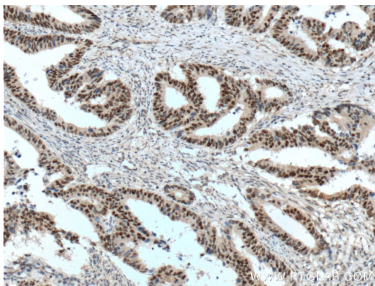
WB results of MSH2 (60161-1-Ig, 1:1000) antibody with si-Control and si-MSH2 transfected HeLa cells.. This data was developed using the same antibody clone with 60161-1-PBS in a different storage buffer formulation.



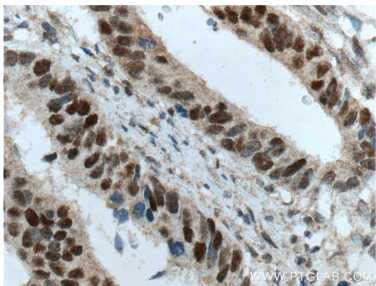
Various lysates were subjected to SDS PAGE followed by western blot with 60161-1-Ig (MSH2 antibody) at dilution of 1:10000 incubated at room temperature for 1.5 hours. This data was developed using the same antibody clone with 60161-1-PBS in a different storage buffer formulation.



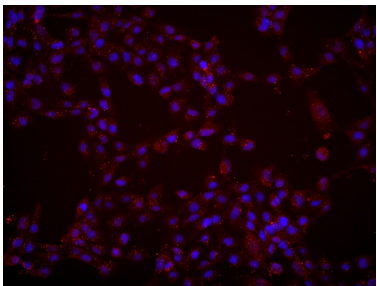
Various lysates were subjected to SDS PAGE followed by western blot with 60161-1-Ig (MSH2 antibody) at dilution of 1:10000 incubated at room temperature for 1.5 hours. This data was developed using the same antibody clone with 60161-1-PBS in a different storage buffer formulation.



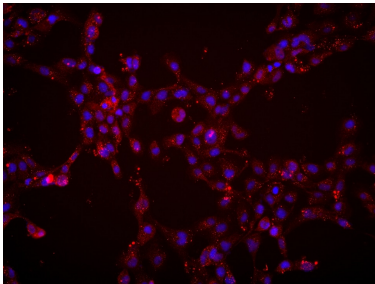
Immunohistochemical analysis of paraffin-embedded human colon cancer tissue slide using 60161-1-Ig (MSH2 Antibody) at dilution of 1:800 (under 10x lens). Heat mediated antigen retrieval with Tris-EDTA buffer (pH 9.0). This data was developed using the same antibody clone with 60161-1-PBS in a different storage buffer formulation.



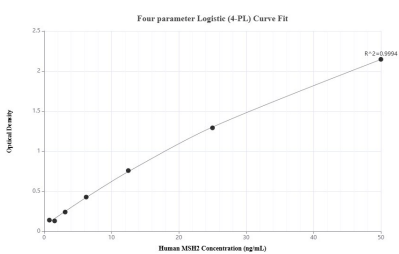
Immunohistochemical analysis of paraffin-embedded human colon cancer tissue slide using 60161-1-Ig (MSH2 Antibody) at dilution of 1:800 (under 40x lens). Heat mediated antigen retrieval with Tris-EDTA buffer (pH 9.0). This data was developed using the same antibody clone with 60161-1-PBS in a different storage buffer formulation.



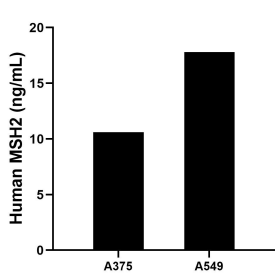
Immunofluorescent analysis of (4% PFA) fixed A431 cells using MSH2 antibody (60161-1-Ig, Clone: 2H5F5 ) at dilution of 1:2277 and Multi-rAb Coralite® Plus 647-Goat Anti-Mouse Recombinant Secondary Antibody (H+L) (Cat.NO. RGAM005). This data was developed using the same antibody clone with 60161-1-PBS in a different storage buffer formulation.



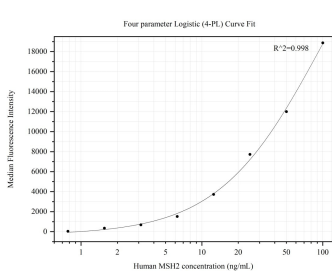
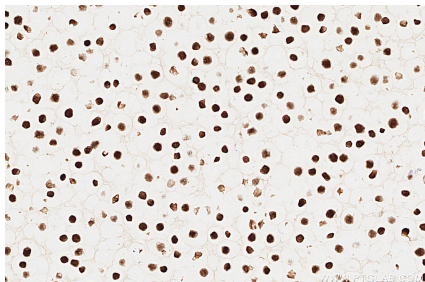
Immunofluorescent analysis of (4% PFA) fixed A431 cells using MSH2 antibody (60161-1-Ig, Clone: 2H5F5 ) at dilution of 1:1000 and Multi-rAb Coralite® Plus 647-Goat Anti-Mouse Recombinant Secondary Antibody (H+L) (Cat.NO. RGAM005). This data was developed using the same antibody clone with 60161-1-PBS in a different storage buffer formulation.



Sandwich ELISA standard curve of MP50235-1, Human MSH2 Monoclonal Matched Antibody Pair - PBS only. 60161-1-PBS was coated to a plate as the capture antibody and incubated with serial dilutions of standard Ag7835. 60161-2-PBS was HRP conjugated as the detection antibody. Range: 0.781-50 ng/mL



The mean MSH2 concentration was determined to be 10.60 ng/mL in A375 cell extract based on a 2.0 mg/mL extract load and 17.80 ng/mL in A549 cell extract based on a 2.6 mg/mL extract load.



Immunohistochemical analysis of paraffin-embedded Ramos cells slide using 60161-1-Ig (MSH2 antibody) at dilution of 1:1000 (under 40x lens). Heat mediated antigen retrieval with Tris-EDTA buffer (pH 9.0). This data was developed using the same antibody clone with 60161-1-PBS in a different storage buffer formulation.

Cytometric bead array standard curve of MP50235-1, MSH2 Monoclonal Matched Antibody Pair, PBS Only. Capture antibody: 60161-1-PBS. Detection antibody: 60161-2-PBS. Standard:Ag7835. Range: 0.781-100 ng/mL