

For Research Use Only

# MSH2 Monoclonal antibody, PBS Only (Capture/Detector)

Catalog Number: 60161-2-PBS



## Basic Information

<b>Catalog Number:</b> 60161-2-PBS	<b>GenBank Accession Number:</b> BC021566	<b>Purification Method:</b> Protein A purification
<b>Size:</b> 100ug, Concentration: 1 mg/ml by Nanodrop;	<b>GeneID (NCBI):</b> 4436	<b>CloneNo.:</b> 2E4A7
<b>Source:</b> Mouse	<b>UNIPROT ID:</b> P43246	
<b>Isotype:</b> IgG2a	<b>Full Name:</b> mutS homolog 2, colon cancer, nonpolyposis type 1 (E. coli)	
<b>Immunogen Catalog Number:</b> AG7835	<b>Calculated MW:</b> 105 kDa	
	<b>Observed MW:</b> 105 kDa	

## Applications

**Tested Applications:**  
WB, IHC, Cytometric bead array, Sandwich ELISA, Indirect ELISA, Sample test

**Species Specificity:**  
human

## Product Information

60161-2-PBS targets MSH2 as part of a matched antibody pair:

MP50235-1: 60161-1-PBS capture and 60161-2-PBS detection (validated in Cytometric bead array, Sandwich ELISA)

MP50235-2: 60161-2-PBS capture and 60161-3-PBS detection (validated in Cytometric bead array)

Unconjugated mouse monoclonal antibody pair in PBS only (BSA and azide free) storage buffer at a concentration of 1 mg/mL, ready for conjugation.

This conjugation ready format makes antibodies ideal for use in many applications including: ELISAs, multiplex assays requiring matched pairs, mass cytometry, and multiplex imaging applications. Antibody use should be optimized by the end user for each application and assay.

## Background Information

MSH2, named for its homologous to the E.coli MutS gene, takes part in DNA mismatch repair(MMR) to maintain the stability of DNA. MSH2 contains a helix-turn-helix domain, which responds for binding to DNA. Also, MSH2 has a direct role in mutation avoidance and micro-satellite stability in cell.

## Storage

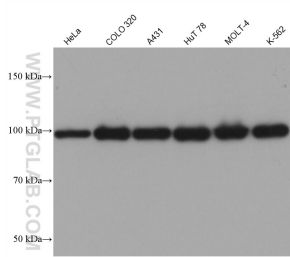
**Storage:**  
Store at -80°C.

**Storage Buffer:**  
PBS only, pH7.3

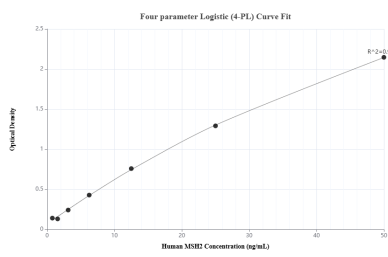
For technical support and original validation data for this product please contact:  
T: 1 (888) 4PTGLAB (1-888-478-4522) (toll free in USA), or 1(312) 455-8498 (outside USA)  
E: [proteintech@ptglab.com](mailto:proteintech@ptglab.com)  
W: [ptglab.com](http://ptglab.com)

This product is exclusively available under Proteintech Group brand and is not available to purchase from any other manufacturer.

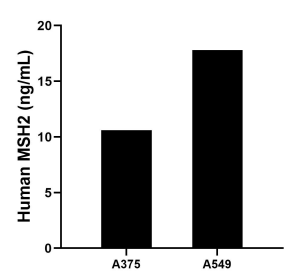
Selected Validation Data



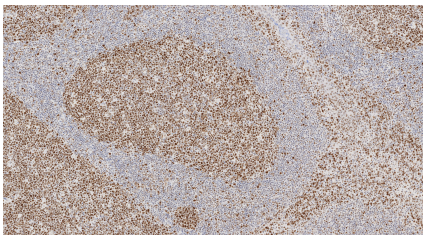
Various lysates were subjected to SDS PAGE followed by western blot with 60161-2-Ig (MSH2 antibody) at dilution of 1:10000 incubated at room temperature for 1.5 hours. This data was developed using the same antibody clone with 60161-2-PBS in a different storage buffer formulation.



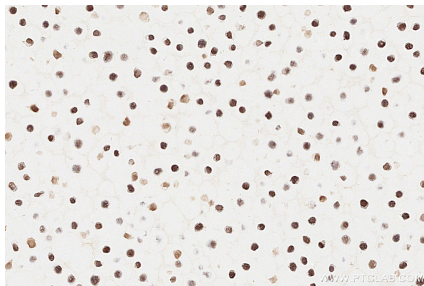
Sandwich ELISA standard curve of MP50235-1, Human MSH2 Monoclonal Matched Antibody Pair - PBS only. 60161-1-PBS was coated to a plate as the capture antibody and incubated with serial dilutions of standard Ag7835. 60161-2-PBS was HRP conjugated as the detection antibody. Range: 0.781-50 ng/mL



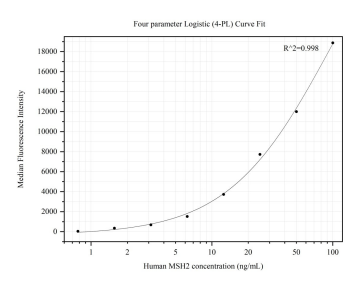
The mean MSH2 concentration was determined to be 10.60 ng/mL in A375 cell extract based on a 2.0 mg/mL extract load and 17.80 ng/mL in A549 cell extract based on a 2.6 mg/mL extract load.



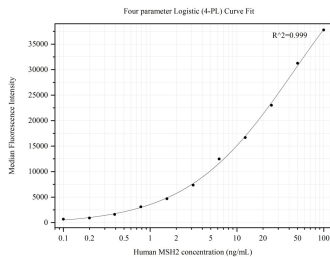
Immunohistochemical analysis of paraffin-embedded human tonsillitis tissue slide using 60161-2-Ig (MSH2 antibody) at dilution of 1:4000 (under 10x lens). Heat mediated antigen retrieval with Tris-EDTA buffer (pH 9.0). This data was developed using the same antibody clone with 60161-2-PBS in a different storage buffer formulation.



Immunohistochemical analysis of paraffin-embedded Ramos cells slide using 60161-2-Ig (MSH2 antibody) at dilution of 1:1000 (under 40x lens). Heat mediated antigen retrieval with Tris-EDTA buffer (pH 9.0). This data was developed using the same antibody clone with 60161-2-PBS in a different storage buffer formulation.



Cytometric bead array standard curve of MP50235-1, MSH2 Monoclonal Matched Antibody Pair, PBS Only. Capture antibody: 60161-1-PBS. Detection antibody: 60161-2-PBS. Standard:Ag7835. Range: 0.781-100 ng/mL



Cytometric bead array standard curve of MP50235-2, MSH2 Monoclonal Matched Antibody Pair, PBS Only. Capture antibody: 60161-2-PBS. Detection antibody: 60161-3-PBS. Standard:Ag7835. Range: 0.098-100 ng/mL