

For Research Use Only

LCK Monoclonal antibody, PBS Only

Catalog Number: 60162-1-PBS



Basic Information

Catalog Number: 60162-1-PBS	GenBank Accession Number: BC013200	Purification Method: Protein A purification
Size: 100ug , Concentration: 1mg/ml by Nanodrop;	GeneID (NCBI): 3932	CloneNo.: 2D10C2
Source: Mouse	UNIPROT ID: P06239	
Isotype: IgG1	Full Name: lymphocyte-specific protein tyrosine kinase	
Immunogen Catalog Number: AG7694	Calculated MW: 539 aa, 56 kDa	
	Observed MW: 50-60 kDa	

Applications

Tested Applications:
WB, IHC, IF/ICC, IF-P, FC (Intra), Cytometric bead array, Indirect ELISA

Species Specificity:
human, rat, pig

Product Information

60162-1-PBS targets LCK as part of a matched antibody pair.

MP51238-1: 60162-1-PBS capture and 60162-3-PBS detection (validated in Cytometric bead array)

Unconjugated mouse monoclonal antibody pair in PBS only (BSA and azide free) storage buffer at a concentration of 1 mg/mL, ready for conjugation.

This conjugation ready format makes antibodies ideal for use in many applications including: ELISAs, multiplex assays requiring matched pairs, mass cytometry, and multiplex imaging applications. Antibody use should be optimized by the end user for each application and assay.

Background Information

LCK (Lymphocyte cell-specific protein-tyrosine kinase) is also named as LSK, p56-LCK and a nonreceptor protein-tyrosine kinase of the SRC oncogene family that is involved in transduction of T-cell receptor-mediated activation. It is implicated in the control of lymphocyte growth by virtue of its overexpression in some lymphoid malignancies and its transforming activity in heterologous systems (PMID: 2784463). It has 3 isoforms produced by alternative splicing.

Storage

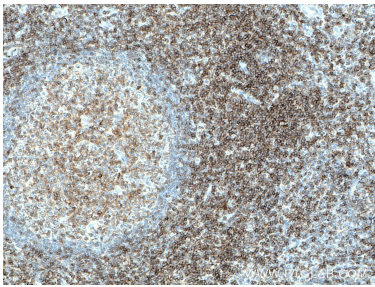
Storage:
Store at -80°C.

Storage Buffer:
PBS Only

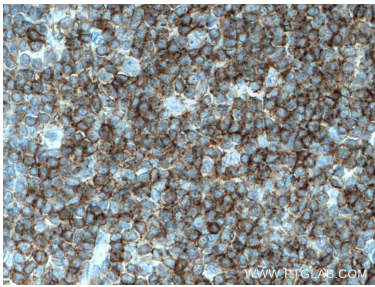
For technical support and original validation data for this product please contact:
T: 1 (888) 4PTGLAB (1-888-478-4522) (toll free in USA), or 1(312) 455-8498 (outside USA)
E: proteintech@ptglab.com
W: ptglab.com

This product is exclusively available under Proteintech Group brand and is not available to purchase from any other manufacturer.

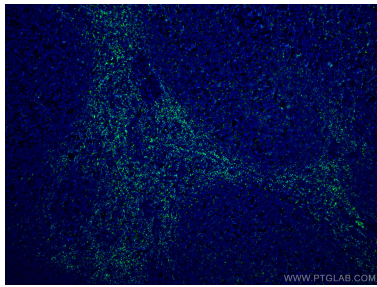
Selected Validation Data



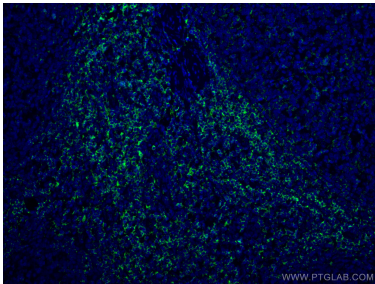
Immunohistochemical analysis of paraffin-embedded human tonsillitis tissue slide using 60162-1-Ig (LCK antibody) at dilution of 1:1000 (under 10x lens. Heat mediated antigen retrieval with Tris-EDTA buffer (pH 9.0). This data was developed using the same antibody clone with 60162-1-PBS in a different storage buffer formulation.



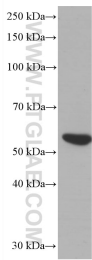
Immunohistochemical analysis of paraffin-embedded human tonsillitis tissue slide using 60162-1-Ig (LCK antibody) at dilution of 1:1000 (under 40x lens. Heat mediated antigen retrieval with Tris-EDTA buffer (pH 9.0). This data was developed using the same antibody clone with 60162-1-PBS in a different storage buffer formulation.



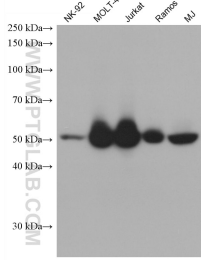
Immunofluorescent analysis of (4% PFA) fixed human tonsillitis tissue using LCK antibody (60162-1-Ig, Clone: 2D10C2) at dilution of 1:400 and CoraLite®488-Conjugated AffiniPure Goat Anti-Mouse IgG(H+L). This data was developed using the same antibody clone with 60162-1-PBS in a different storage buffer formulation.



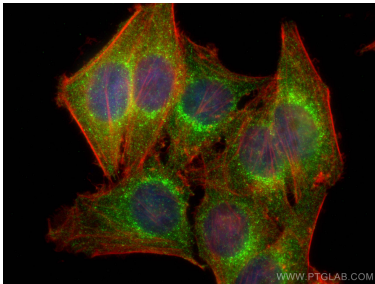
Immunofluorescent analysis of (4% PFA) fixed human tonsillitis tissue using LCK antibody (60162-1-Ig, Clone: 2D10C2) at dilution of 1:400 and CoraLite®488-Conjugated AffiniPure Goat Anti-Mouse IgG(H+L). This data was developed using the same antibody clone with 60162-1-PBS in a different storage buffer formulation.



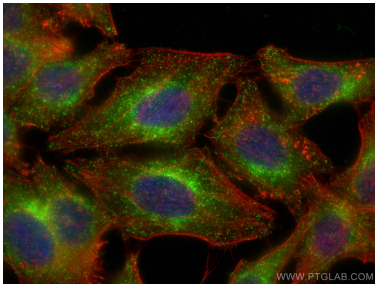
pig thymus tissue were subjected to SDS PAGE followed by western blot with 60162-1-Ig (LCK antibody) at dilution of 1:3000 incubated at room temperature for 1.5 hours. This data was developed using the same antibody clone with 60162-1-PBS in a different storage buffer formulation.



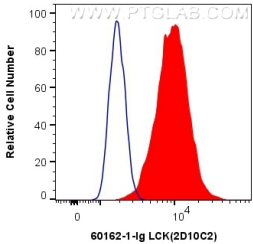
Various lysates were subjected to SDS PAGE followed by western blot with 60162-1-Ig (LCK antibody) at dilution of 1:10000 incubated at room temperature for 1.5 hours. This data was developed using the same antibody clone with 60162-1-PBS in a different storage buffer formulation.



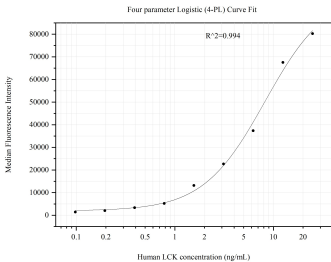
Immunofluorescent analysis of (4% PFA) fixed HepG2 cells using LCK antibody (60162-1-Ig, Clone: 2D10C2) at dilution of 1:800 and CoraLite®488-Conjugated AffiniPure Goat Anti-Mouse IgG(H+L), CL594-phalloidin (red). This data was developed using the same antibody clone with 60162-1-PBS in a different storage buffer formulation.



Immunofluorescent analysis of (-20°C Ethanol) fixed HepG2 cells using LCK antibody (60162-1-Ig, Clone: 2D10C2) at dilution of 1:800 and CoraLite®488-Conjugated AffiniPure Goat Anti-Mouse IgG(H+L), CL594-phalloidin (red). This data was developed using the same antibody clone with 60162-1-PBS in a different storage buffer formulation.



1X10⁶ HepG2 cells were intracellularly stained with 0.4 ug Anti-Human LCK (60162-1-Ig, Clone:2D10C2) and CoraLite®488-Conjugated AffiniPure Goat Anti-Mouse IgG(H+L) at dilution 1:1000 (red), or 0.4 ug Control Antibody. Cells were fixed with 4% PFA and permeabilized with Flow Cytometry Perm Buffer (PF00011-C). This data was developed using the same antibody clone with 60162-1-PBS in a different storage buffer formulation.



Cytometric bead array standard curve of MP51238-1, LCK Monoclonal Matched Antibody Pair, PBS Only. Capture antibody: 60162-1-PBS. Detection antibody: 60162-3-PBS. Standard:Ag7694. Range: 0.098-25 ng/mL