

For Research Use Only

# BCL2 Monoclonal antibody, PBS Only



Catalog Number: 60178-1-PBS

Featured Product

## Basic Information

Catalog Number:

60178-1-PBS

Size:

100ug, Concentration: 1 mg/ml by Nanodrop;

Source:

Mouse

Isotype:

IgG2b

Immunogen Catalog Number:

AG3508

GenBank Accession Number:

BC027258

GeneID (NCBI):

596

UNIPROT ID:

P10415

Full Name:

B-cell CLL/lymphoma 2

Calculated MW:

26 kDa

Observed MW:

26 kDa

Purification Method:

Protein A purification

CloneNo.:

4H8C6

## Applications

Tested Applications:

IP, IF, FC, IHC, Indirect ELISA

Species Specificity:

human, pig

## Background Information

BCL2 belongs to the Bcl-2 family. It suppresses apoptosis in a variety of cell systems including factor-dependent lymphohematopoietic and neural cells. BCL2 regulates cell death by controlling the mitochondrial membrane permeability. It appears to function in a feedback loop system with caspases. BCL2 inhibits caspase activity either by preventing the release of cytochrome c from the mitochondria and/or by binding to the apoptosis-activating factor (APAF-1).

## Storage

Storage:

Store at -80°C.

Storage Buffer:

PBS Only

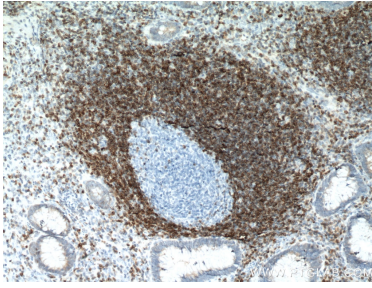
For technical support and original validation data for this product please contact:

T: 1 (888) 4PTGLAB (1-888-478-4522) (toll free in USA), or 1(312) 455-8498 (outside USA)

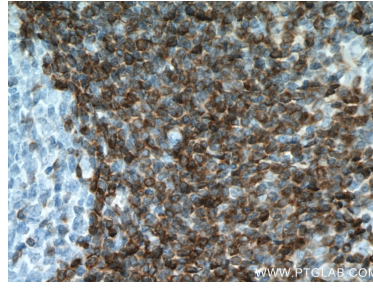
E: [proteintech@ptglab.com](mailto:proteintech@ptglab.com)  
W: [ptglab.com](http://ptglab.com)

This product is exclusively available under Proteintech Group brand and is not available to purchase from any other manufacturer.

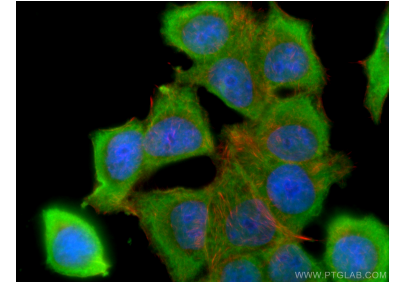
## Selected Validation Data



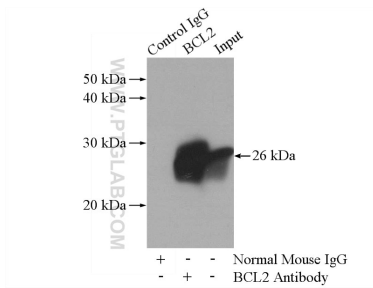
Immunohistochemical analysis of paraffin-embedded human appendicitis tissue slide using 60178-1-Ig (BCL2 antibody) at dilution of 1:12800 (under 10x lens. Heat mediated antigen retrieval with Tris-EDTA buffer (pH 9.0). This data was developed using the same antibody clone with 60178-1-PBS in a different storage buffer formulation.



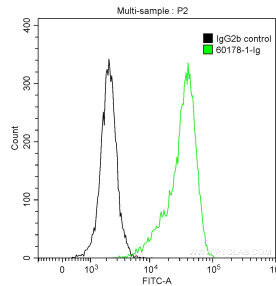
Immunohistochemical analysis of paraffin-embedded human appendicitis tissue slide using 60178-1-Ig (BCL2 antibody) at dilution of 1:12800 (under 40x lens. Heat mediated antigen retrieval with Tris-EDTA buffer (pH 9.0). This data was developed using the same antibody clone with 60178-1-PBS in a different storage buffer formulation.



Immunofluorescent analysis of (-20°C Ethanol) fixed MCF-7 cells using BCL2 antibody (60178-1-Ig, Clone: 4H8C6) at dilution of 1:400 and Coralite@488-Conjugated AffiniPure Goat Anti-Mouse IgG(H+L). This data was developed using the same antibody clone with 60178-1-PBS in a different storage buffer formulation.



IP result of anti-BCL2 (IP:60178-1-Ig, 5ug; Detection:60178-1-Ig 1:1000) with U-937 cells lysate 4000ug. This data was developed using the same antibody clone with 60178-1-PBS in a different storage buffer formulation.



1X10<sup>6</sup> human peripheral blood lymphocytes were stained with 0.2 ug Anti-Human BCL2 (60178-1-Ig, Clone:4H8C6) and Coralite@488-Conjugated AffiniPure Goat Anti-Mouse IgG(H+L) at dilution 1:1000 (green), or 0.2 ug isotype control and Coralite@488-Conjugated AffiniPure Goat Anti-Mouse IgG(H+L) at dilution 1:1000 (black). Cells were fixed with 4% PFA and permeabilized with 0.1% Triton X-100. This data was developed using the same antibody clone with 60178-1-PBS in a