

For Research Use Only

# CD34 Monoclonal antibody, PBS Only



Catalog Number: 60180-1-PBS

## Basic Information

<b>Catalog Number:</b> 60180-1-PBS	<b>GenBank Accession Number:</b> BC039146	<b>Purification Method:</b> Protein A purification
<b>Size:</b> 100ug , Concentration: 1 mg/ml by Nanodrop;	<b>GeneID (NCBI):</b> 947	<b>CloneNo.:</b> 3C8G12
<b>Source:</b> Mouse	<b>UNIPROT ID:</b> P28906	
<b>Isotype:</b> IgG2b	<b>Full Name:</b> CD34 molecule	
<b>Immunogen Catalog Number:</b> AG5996	<b>Calculated MW:</b> 41 kDa	
	<b>Observed MW:</b> 105 kDa	

## Applications

**Tested Applications:**  
WB, IF, FC, ELISA

**Species Specificity:**  
human

## Background Information

CD34 is a 105- to 120-kDa glycoposphoprotein expressed on the majority of hematopoietic stem/progenitor cells, bone marrow stromal cells, capillary endothelial cells, embryonic fibroblasts, and some nerve tissue. CD34 is a commonly used marker for identifying human hematopoietic stem/progenitor cells and mediates cell adhesion and lymphocyte homing by binding L-selectin and E-selectin ligands. CD34 is also one of the best negative selection markers for characterizing and/or isolating human MSCs from bone marrow and other sources. Along with other positive selection markers (such as CD29, CD44, CD90, CD105 and CD166), negative selection markers (such as CD34 and CD45) are used for MSC identification.

## Storage

**Storage:**  
Store at -20°C. Stable for one year after shipment.

**Storage Buffer:**  
PBS only

Aliquoting is unnecessary for -20°C storage

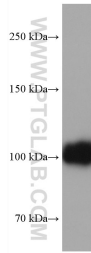
For technical support and original validation data for this product please contact:

T: 1 (888) 4PTGLAB (1-888-478-4522) (toll free in USA), or 1(312) 455-8498 (outside USA)

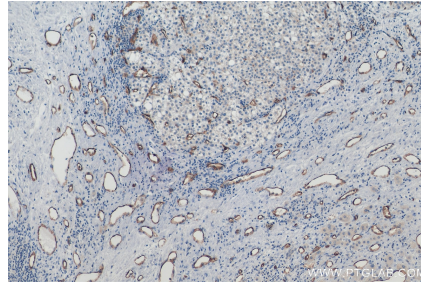
E: [proteintech@ptglab.com](mailto:proteintech@ptglab.com)  
W: [ptglab.com](http://ptglab.com)

**This product is exclusively available under Proteintech Group brand and is not available to purchase from any other manufacturer.**

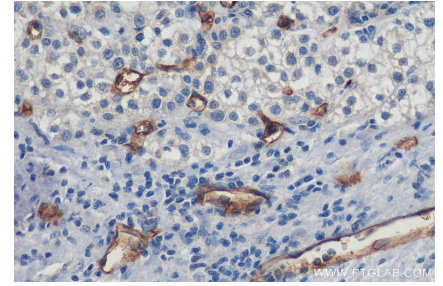
## Selected Validation Data



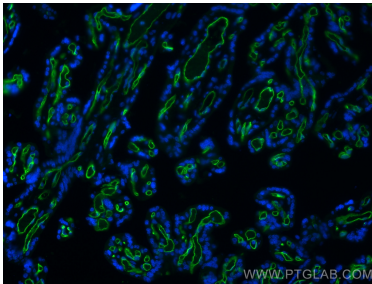
human placenta tissue were subjected to SDS PAGE followed by western blot with 60180-1-Ig (CD34 antibody) at dilution of 1:2000 incubated at room temperature for 1.5 hours. This data was developed using the same antibody clone with 60180-1-PBS in a different storage buffer formulation.



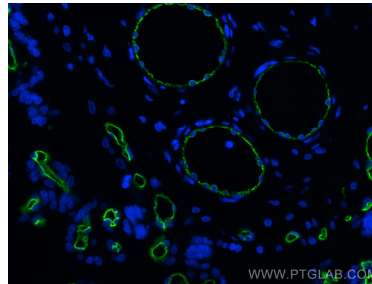
Immunohistochemical analysis of paraffin-embedded human liver cancer tissue slide using 60180-1-Ig (CD34 antibody) at dilution of 1:5000 (under 10x lens). Heat mediated antigen retrieval with Tris-EDTA buffer (pH 9.0). This data was developed using the same antibody clone with 60180-1-PBS in a different storage buffer formulation.



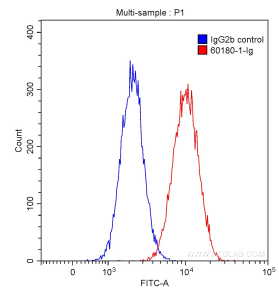
Immunohistochemical analysis of paraffin-embedded human liver cancer tissue slide using 60180-1-Ig (CD34 antibody) at dilution of 1:5000 (under 40x lens). Heat mediated antigen retrieval with Tris-EDTA buffer (pH 9.0). This data was developed using the same antibody clone with 60180-1-PBS in a different storage buffer formulation.



Immunofluorescent analysis of (4% PFA) fixed human placenta tissue using CD34 antibody (60180-1-Ig, Clone: 3C8G12) at dilution of 1:400 and CoraLite®488-Conjugated AffiniPure Goat Anti-Mouse IgG(H+L). This data was developed using the same antibody clone with 60180-1-PBS in a different storage buffer formulation.



Immunofluorescent analysis of (4% PFA) fixed human placenta tissue using CD34 antibody (60180-1-Ig, Clone: 3C8G12) at dilution of 1:400 and CoraLite®488-Conjugated AffiniPure Goat Anti-Mouse IgG(H+L). This data was developed using the same antibody clone with 60180-1-PBS in a different storage buffer formulation.



$1 \times 10^6$  HUVEC cells were stained with 0.20 ug Anti-Human CD34 (60180-1-Ig, Clone:3C8G12) (red) or 0.20 ug control antibody (blue) and CoraLite®488-Conjugated AffiniPure Goat Anti-Mouse IgG(H+L) with dilution of 1:1000. Cells were fixed with 90% MeOH. This data was developed using the same antibody clone with 60180-1-PBS in a different storage buffer formulation.