

For Research Use Only

# CD138/Syndecan-1 Monoclonal antibody, PBS Only (Capture)

Catalog Number: 60185-1-PBS



## Basic Information

Catalog Number:	60185-1-PBS	GenBank Accession Number:	BC008765	Purification Method:	Protein G purification
Size:	100ug, Concentration: 1mg/ml by Nanodrop;	GeneID (NCBI):	6382	CloneNo.:	1B6A2
Source:	Mouse	UNIPROT ID:	P18827		
Isotype:	IgG1	Full Name:	syndecan 1		
Immunogen Catalog Number:	AG0823	Calculated MW:	32.5 kDa		
		Observed MW:	120 kDa		

## Applications

**Tested Applications:**  
WB, Sandwich ELISA, Indirect ELISA, Sample test

**Species Specificity:**  
human

## Product Information

60185-1-PBS targets CD138/Syndecan-1 as part of a matched antibody pair:

MP50044-1: 60185-1-PBS capture and 67155-1-PBS detection (validated in Sandwich ELISA)

Unconjugated mouse monoclonal antibody pair in PBS only (BSA and azide free) storage buffer at a concentration of 1 mg/mL, ready for conjugation.

This conjugation ready format makes antibodies ideal for use in many applications including: ELISAs, multiplex assays requiring matched pairs, mass cytometry, and multiplex imaging applications. Antibody use should be optimized by the end user for each application and assay.

## Background Information

Syndecan-1 (SDC1), also named CD138, is an integral membrane protein. It participates in cell proliferation, cell migration and cell-matrix interactions via its receptor for extracellular matrix proteins. It is a heparan sulfate proteoglycan expressed on the surface of, and actively shed by, myeloma cells. Altered syndecan-1 expression has been detected in several different tumor types. SDC1 was regarded as a useful marker for labeling normal and neoplastic plasma cells and plasmacytoid lymphomas.

## Storage

**Storage:**  
Store at -80°C.

**Storage Buffer:**  
PBS only, pH7.3

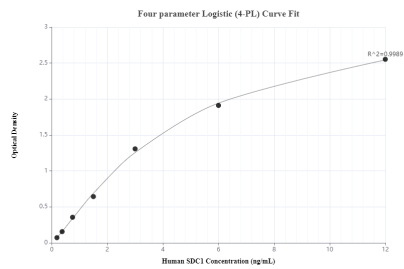
For technical support and original validation data for this product please contact:  
T: 1 (888) 4PTGLAB (1-888-478-4522) (toll free in USA), or 1(312) 455-8498 (outside USA)  
E: [proteintech@ptglab.com](mailto:proteintech@ptglab.com)  
W: [ptglab.com](http://ptglab.com)

This product is exclusively available under Proteintech Group brand and is not available to purchase from any other manufacturer.

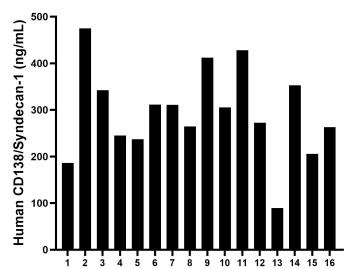
Selected Validation Data



BxPC-3 cells were subjected to SDS PAGE followed by western blot with 60185-1-Ig (CD138/Syndecan-1 antibody) at dilution of 1:400 incubated at room temperature for 1.5 hours. This data was developed using the same antibody clone with 60185-1-PBS in a different storage buffer formulation.



Sandwich ELISA standard curve of MP50044-1, SDC1,CD138 Monoclonal Matched Antibody Pair, PBS Only. Capture antibody: 60185-1-PBS. Detection antibody: 67155-1-PBS. Standard: Ag17733. Range: 0.188-12 ng/mL.



Plasma of sixteen individual healthy human donors was measured. The CD138/Syndecan-1 concentration of detected samples was determined to be 293.79 ng/mL with a range of 89.65-474.60 ng/mL.