

# CD138/Syndecan-1 Monoclonal antibody

 Catalog Number: 60185-2-Ig **1 Publications**

## Basic Information

<b>Catalog Number:</b> 60185-2-Ig	<b>GenBank Accession Number:</b> BC008765	<b>Purification Method:</b> Protein A purification
<b>Size:</b> 150ul , Concentration: 600 µg/ml by Bradford method using BSA as the standard;	<b>GeneID (NCBI):</b> 6382	<b>CloneNo.:</b> 4H5H5
<b>Source:</b> Mouse	<b>Full Name:</b> syndecan 1	<b>Recommended Dilutions:</b> WB 1:500-1:1000 IHC 1:20-1:200
<b>Isotype:</b> IgG2a	<b>Calculated MW:</b> 32.5 kDa	
<b>Immunogen Catalog Number:</b> AG0823	<b>Observed MW:</b> 140 kDa	

## Applications

<b>Tested Applications:</b> IHC, WB, ELISA	<b>Positive Controls:</b>
<b>Cited Applications:</b> CoIP, WB	<b>WB :</b> MCF7 cells,
<b>Species Specificity:</b> human	<b>IHC :</b> human tonsil tissue,
<b>Cited Species:</b> human	

**Note-IHC: suggested antigen retrieval with TE buffer pH 9.0; (\*) Alternatively, antigen retrieval may be performed with citrate buffer pH 6.0**

## Background Information

Syndecan-1 (SDC1), also named CD138, is an integral membrane protein. It participates in cell proliferation, cell migration and cell-matrix interactions via its receptor for extracellular matrix proteins. It is a heparan sulfate proteoglycan expressed on the surface of, and actively shed by, myeloma cells. Altered syndecan-1 expression has been detected in several different tumor types. SDC1 was regarded as a useful marker for labeling normal and neoplastic plasma cells and plasmacytoid lymphomas.

## Notable Publications

Author	Pubmed ID	Journal	Application
Charlie Colin-Pierre	34957110	Front Cell Dev Biol	WB, CoIP

## Storage

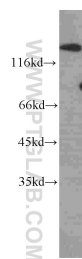
**Storage:**  
Store at -20°C. Stable for one year after shipment.  
**Storage Buffer:**  
PBS with 0.02% sodium azide and 50% glycerol pH 7.3.  
 Aliquoting is unnecessary for -20°C storage

\*\*\* 20ul sizes contain 0.1% BSA

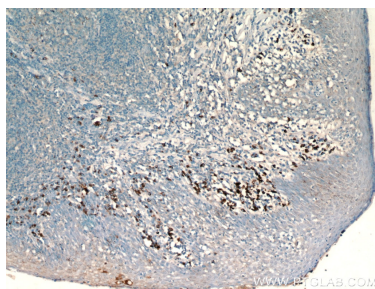
For technical support and original validation data for this product please contact:  
 T: 1 (888) 4PTGLAB (1-888-478-4522) (toll free in USA), or 1(312) 455-8498 (outside USA)  
 E: [proteintech@ptglab.com](mailto:proteintech@ptglab.com)  
 W: [ptglab.com](http://ptglab.com)

This product is exclusively available under Proteintech Group brand and is not available to purchase from any other manufacturer.

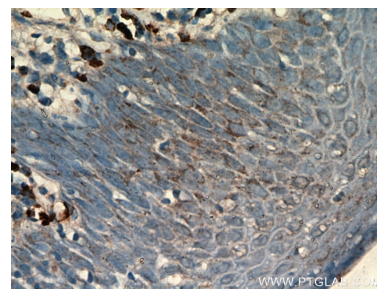
## Selected Validation Data



MCF7 cells were subjected to SDS PAGE followed by western blot with 60185-2-Ig (CD138/Syndecan-1 antibody) at dilution of 1:500 incubated at room temperature for 1.5 hours.



Immunohistochemical analysis of paraffin-embedded human tonsil using 60185-2-Ig(CD138/Syndecan-1 antibody) at dilution of 1:50 (under 10x lens).



Immunohistochemical analysis of paraffin-embedded human tonsil using 60185-2-Ig(CD138/Syndecan-1 antibody) at dilution of 1:50 (under 40x lens).