

For Research Use Only

# Cyclin D1 Monoclonal antibody

Catalog Number: 60186-1-Ig

Featured Product

633 Publications



## Basic Information

Catalog Number: 60186-1-Ig	GenBank Accession Number: BC000076	Purification Method: Protein A purification
Size: 150ul , Concentration: 2000 µg/ml by Nanodrop;	GeneID (NCBI): 595	CloneNo.: 2G3G5
Source: Mouse	Full Name: cyclin D1	Recommended Dilutions: WB 1:5000-1:50000
Isotype: IgG2b	Calculated MW: 295 aa, 34 kDa	
Immunogen Catalog Number: AG0689	Observed MW: 34 kDa	

## Applications

Tested Applications: FC, WB, ELISA	Positive Controls: WB : HCT 116 cells, SH-SY5Y cells, HeLa cells, RAW 264.7 cells, A549 cells, NIH/3T3 cells, MCF-7 cells, A431 cells, HepG2 cells, SW 1990 cells, HSC-T6 cells, PC-12 cells
Cited Applications: IF, IP, WB	
Species Specificity: human, mouse, rat	
Cited Species: human, goat, mouse, zebrafish, hamster, bovine	

## Background Information

CCND1 (cyclin D1), also known as PRAD1 or BCL1, belongs to the highly conserved cyclin family, whose members are characterized by a dramatic periodicity in protein abundance throughout the cell cycle. CCND1 forms a complex with and functions as a regulatory subunit of CDK4 or CDK6, whose activity is required for cell cycle G1/S transition. The CCND1 gene, located on 11q13 has been reported to be overexpressed in mantle cell lymphoma (MCL) due to the chromosomal translocation. CCND1 has been shown to interact with tumor suppressor protein Rb and the expression of this gene is regulated positively by Rb. Over-expression of CCND1 is known to correlate with the early onset of cancer and risk of tumor progression and metastasis.

## Notable Publications

Author	Pubmed ID	Journal	Application
Ji Xing	36230734	Cancers (Basel)	WB
Yong-Li Zhang	34679694	Antioxidants (Basel)	WB
Wei-Liang Ye	26419507	Sci Rep	WB

## Storage

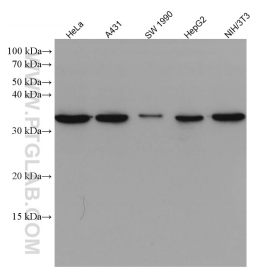
Storage:  
Store at -20°C. Stable for one year after shipment.  
Storage Buffer:  
PBS with 0.02% sodium azide and 50% glycerol pH 7.3.  
Aliquoting is unnecessary for -20°C storage

\*\*\* 20ul sizes contain 0.1% BSA

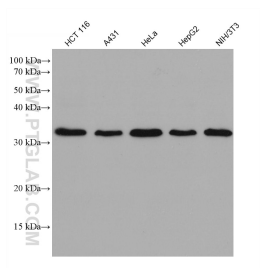
For technical support and original validation data for this product please contact:  
T: 1 (888) 4PTGLAB (1-888-478-4522) (toll free in USA), or 1(312) 455-8498 (outside USA)  
E: proteintech@ptglab.com  
W: ptglab.com

This product is exclusively available under Proteintech Group brand and is not available to purchase from any other manufacturer.

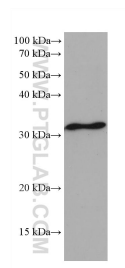
Selected Validation Data



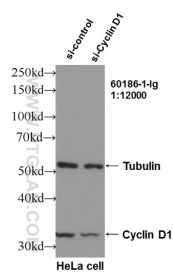
Various lysates were subjected to SDS PAGE followed by western blot with 60186-1-Ig (Cyclin D1 antibody) at dilution of 1:40000 incubated at room temperature for 1.5 hours.



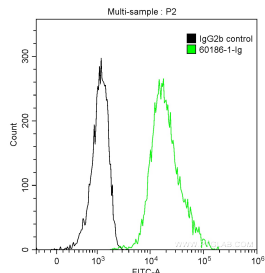
Various lysates were subjected to SDS PAGE followed by western blot with 60186-1-Ig (Cyclin D1 antibody) at dilution of 1:20000 incubated at room temperature for 1.5 hours.



RAW 264.7 cells were subjected to SDS PAGE followed by western blot with 60186-1-Ig (Cyclin D1 antibody) at dilution of 1:20000 incubated at room temperature for 1.5 hours.



WB result of Cyclin D1 antibody (60186-1-Ig, 1:12,000) with si-Control and si-Cyclin D1 transfected HeLa cells.



1X10<sup>6</sup> SH-SY5Y cells were stained with 0.2 ug Anti-Human Cyclin D1 (60186-1-Ig, Clone:2G3G5) and CoraLite®488-Conjugated AffiniPure Goat Anti-Mouse IgG(H+L) at dilution 1:1000 (green), and 0.2 ug Control Antibody. Cells were fixed with 90% MeOH.