

For Research Use Only

WTAP Monoclonal antibody, PBS Only



Catalog Number: 60188-1-PBS

Featured Product

Basic Information

Catalog Number:

60188-1-PBS

Size:

100ug , Concentration: 1 mg/ml by Nanodrop;

Source:

Mouse

Isotype:

IgG1

Immunogen Catalog Number:

AG0259

GenBank Accession Number:

BC000383

GeneID (NCBI):

9589

UNIPROT ID:

Q15007

Full Name:

Wilms tumor 1 associated protein

Calculated MW:

45 kDa

Observed MW:

50 kDa

Purification Method:

Protein A purification

CloneNo.:

4A10G9

Applications

Tested Applications:

WB, IP, IF, IHC, Indirect ELISA

Species Specificity:

human, mouse, rat

Background Information

WTAP, also named as KIAA0105 and hFL(2)D, is previously identified as a protein associated with Wilms' tumor-1 (WT-1) protein that is essential for the development of the genitourinary system. It is a Pre-mRNA-splicing regulator protein. It is a regulatory subunit of the WMM N6-methyltransferase complex which plays a role in the efficiency of mRNA splicing and processing and mRNA stability. It is required for accumulation of METTL3 and METTL14 to nuclear speckle. MW of WTAP is 45-50 kDa due to phosphorylation.

Storage

Storage:

Store at -80°C.

Storage Buffer:

PBS Only

For technical support and original validation data for this product please contact:

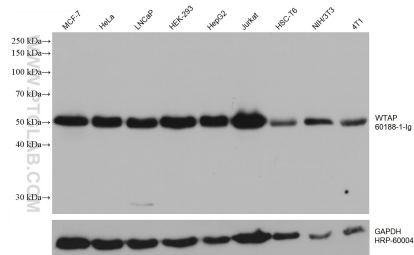
T: 1 (888) 4PTGLAB (1-888-478-4522) (toll free in USA), or 1(312) 455-8498 (outside USA)

E: proteintech@ptglab.com

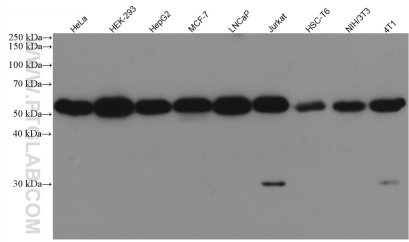
W: ptglab.com

This product is exclusively available under Proteintech Group brand and is not available to purchase from any other manufacturer.

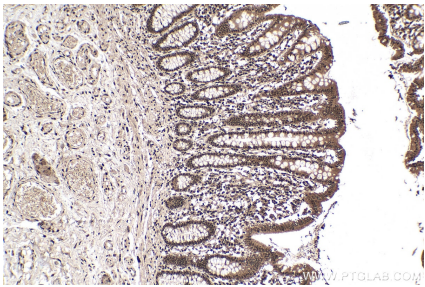
Selected Validation Data



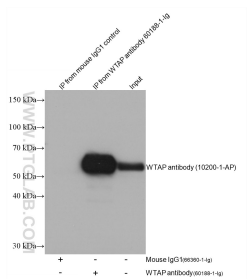
Various lysates were subjected to SDS PAGE followed by western blot with 60188-1-Ig (WTAP antibody) at dilution of 1:20000 incubated at room temperature for 1.5 hours. The membrane was stripped and reblotted with HRP-conjugated GAPDH Monoclonal antibody (HRP-60004) as loading control. This data was developed using the same antibody clone with 60188-1-PBS in a different storage buffer formulation.



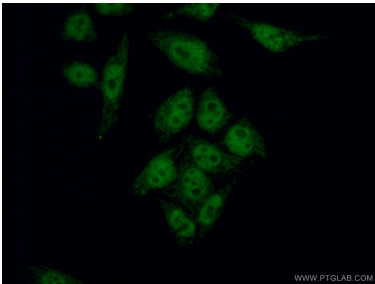
Various lysates were subjected to SDS PAGE followed by western blot with 60188-1-Ig (WTAP antibody) at dilution of 1:20000 incubated at room temperature for 1.5 hours. This data was developed using the same antibody clone with 60188-1-PBS in a different storage buffer formulation.



Immunohistochemical analysis of paraffin-embedded human colon tissue slide using 60188-1-Ig (WTAP antibody) at dilution of 1:1000 (under 10x lens). Heat mediated antigen retrieval with Tris-EDTA buffer (pH 9.0). This data was developed using the same antibody clone with 60188-1-PBS in a different storage buffer formulation.



IP result of anti-WTAP (IP:60188-1-Ig, 4ug; Detection:10200-1-AP 1:8000) with HeLa cells lysate 2000 ug. This data was developed using the same antibody clone with 60188-1-PBS in a different storage buffer formulation.



Immunofluorescent analysis of (4% PFA) fixed HeLa cells using 60188-1-Ig(WTAP antibody) at dilution of 1:50 and Alexa Fluor 488-conjugated AffiniPure Goat Anti-Mouse IgG(H+L). This data was developed using the same antibody clone with 60188-1-PBS in a different storage buffer formulation.