

For Research Use Only

# Synaptophysin Monoclonal antibody



Catalog Number: 60191-1-Ig

13 Publications

## Basic Information

<b>Catalog Number:</b> 60191-1-Ig	<b>GenBank Accession Number:</b> BC064550	<b>Purification Method:</b> Protein A purification
<b>Size:</b> 150ul, Concentration: 1000 µg/ml by Bradford method using BSA as the standard;	<b>GeneID (NCBI):</b> 6855	<b>CloneNo.:</b> 5B3F2
<b>Source:</b> Mouse	<b>Full Name:</b> synaptophysin	<b>Recommended Dilutions:</b> WB 1:500-1:2000 IHC 1:50-1:500 IF 1:10-1:100
<b>Isotype:</b> IgG3	<b>Calculated MW:</b> 313 aa, 34 kDa	
<b>Immunogen Catalog Number:</b> AG11803	<b>Observed MW:</b> 38 kDa	

## Applications

### Tested Applications:

IF, IHC, WB, ELISA

### Cited Applications:

FC, IF, IHC, WB

### Species Specificity:

human, mouse, rat, pig, rabbit

### Cited Species:

human, rat, mouse

**Note-IHC: suggested antigen retrieval with TE buffer pH 9.0; (\*) Alternatively, antigen retrieval may be performed with citrate buffer pH 6.0**

### Positive Controls:

WB : fetal human brain tissue, human brain tissue, pig brain tissue, SH-SY5Y cells

IHC : human brain tissue,

IF : PC-12 cells,

## Background Information

Synaptophysin (SYP, also known as major synaptic vesicle protein p38) is a 38-kDa integral membrane glycoprotein that regulates synaptic vesicle endocytosis. It is the most abundant synaptic vesicle protein by mass. Synaptophysin is present in neuroendocrine cells and neurons that participate in synaptic transmission. Synaptophysin is a useful marker for identification of neuroendocrine cells and neoplasms. (PMID: 3010302; 21658579)

## Notable Publications

Author	Pubmed ID	Journal	Application
Yuhong Wang	35656407	Front Cell Neurosci	WB
Danqing Xin	29751053	Brain Behav Immun	WB,IF
Dexiang Liu	32194421	Front Pharmacol	IHC

## Storage

### Storage:

Store at -20°C. Stable for one year after shipment.

### Storage Buffer:

PBS with 0.02% sodium azide and 50% glycerol pH 7.3.

Aliquoting is unnecessary for -20°C storage

\*\*\* 20ul sizes contain 0.1% BSA

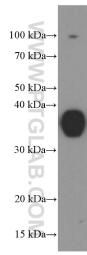
For technical support and original validation data for this product please contact:

T: 1 (888) 4PTGLAB (1-888-478-4522) (toll free in USA), or 1(312) 455-8498 (outside USA)

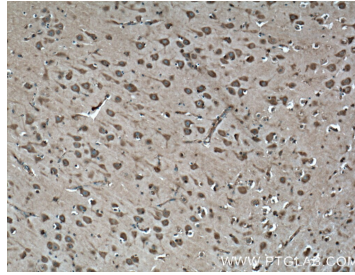
E: proteintech@ptglab.com  
W: ptglab.com

This product is exclusively available under Proteintech Group brand and is not available to purchase from any other manufacturer.

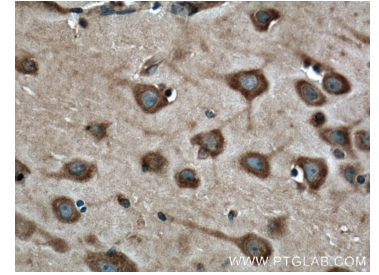
## Selected Validation Data



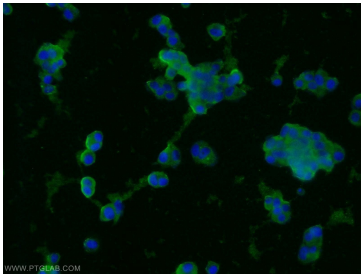
fetal human brain tissue were subjected to SDS PAGE followed by western blot with 60191-1-Ig (Synaptophysin antibody at dilution of 1:1000 incubated at room temperature for 1.5 hours.



Immunohistochemical analysis of paraffin-embedded human brain tissue slide using 60191-1-Ig (Synaptophysin antibody at dilution of 1:200 (under 10x lens). Heat mediated antigen retrieval with Tris-EDTA buffer (pH 9.0).



Immunohistochemical analysis of paraffin-embedded human brain tissue slide using 60191-1-Ig (Synaptophysin antibody at dilution of 1:200 (under 40x lens). Heat mediated antigen retrieval with Tris-EDTA buffer (pH 9.0).



Immunofluorescent analysis of PC-12 cells using 60191-1-Ig (Synaptophysin antibody) at dilution of 1:25 and Alexa Fluor 488-conjugated AffiniPure Goat Anti-Mouse IgG (H+L).