

For Research Use Only

TMEM70 Monoclonal antibody

Catalog Number: 60195-1-Ig

Featured Product

1 Publications



Basic Information

Catalog Number:

60195-1-Ig

Size:

150ul, Concentration: 1000 ug/ml by Bradford method using BSA as the standard;

Source:

Mouse

Isotype:

IgG2b

Immunogen Catalog Number:

AG16947

GenBank Accession Number:

BC002748

GeneID (NCBI):

54968

UNIPROT ID:

Q9BUB7

Full Name:

transmembrane protein 70

Calculated MW:

260 aa, 29 kDa

Observed MW:

18 kDa

Purification Method:

Protein A purification

CloneNo.:

2C11C3

Recommended Dilutions:

WB 1:500-1:1000

IHC 1:20-1:200

Applications

Tested Applications:

WB, IHC, ELISA

Cited Applications:

WB

Species Specificity:

human

Cited Species:

human

Note-IHC: suggested antigen retrieval with TE buffer pH 9.0; (*) Alternatively, antigen retrieval may be performed with citrate buffer pH 6.0

Positive Controls:

WB : A2780 cells, HeLa cells

IHC : human liver tissue, human pancreas tissue

Background Information

TMEM70 belongs to the TMEM70 family. It is involved in biogenesis of mitochondrial ATP synthase. Defects in TMEM70 are a cause of mitochondrial encephalomyopathy neonatal due to ATP synthase deficiency (MT-ATPSD). A publication (PMID:21147908) identified TMEM70 gene defect as a pan-ethnic disorder and further redefined it as the most common cause of nuclear-origin ATP synthase deficiency.

Notable Publications

Author	Pubmed ID	Journal	Application
Hana Kratochvílová	24576557	Mitochondrion	WB

Storage

Storage:

Store at -20°C. Stable for one year after shipment.

Storage Buffer:

PBS with 0.02% sodium azide and 50% glycerol pH 7.3.

Aliquoting is unnecessary for -20°C storage

*** 20ul sizes contain 0.1% BSA

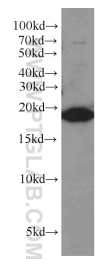
For technical support and original validation data for this product please contact:

T: 1 (888) 4PTGLAB (1-888-478-4522) (toll free in USA), or 1(312) 455-8498 (outside USA)

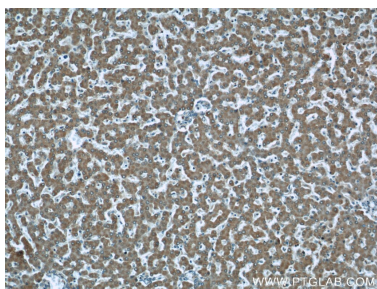
E: proteintech@ptglab.com
W: ptglab.com

This product is exclusively available under Proteintech Group brand and is not available to purchase from any other manufacturer.

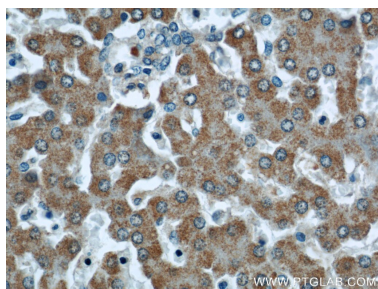
Selected Validation Data



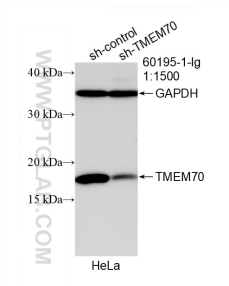
A2780 cells were subjected to SDS PAGE followed by western blot with 60195-1-Ig (TMEM70 antibody) at dilution of 1:500 incubated at room temperature for 1.5 hours.



Immunohistochemical analysis of paraffin-embedded human liver using 60195-1-Ig(TMEM70 antibody) at dilution of 1:50 (under 10x lens).



Immunohistochemical analysis of paraffin-embedded human liver using 60195-1-Ig(TMEM70 antibody) at dilution of 1:50 (under 40x lens).



WB result of TMEM70 antibody (60195-1-Ig; 1:1500; incubated at room temperature for 1.5 hours) with sh-Control and sh-TMEM70 transfected HeLa cells.