

For Research Use Only

# TMEM70 Monoclonal antibody, PBS Only



Catalog Number: 60195-1-PBS

Featured Product

## Basic Information

Catalog Number:

60195-1-PBS

Size:

100ug, Concentration: 1 mg/ml by Nanodrop;

Source:

Mouse

Isotype:

IgG2b

Immunogen Catalog Number:

AG16947

GenBank Accession Number:

BC002748

GeneID (NCBI):

54968

UNIPROT ID:

Q9BUB7

Full Name:

transmembrane protein 70

Calculated MW:

260 aa, 29 kDa

Observed MW:

18 kDa

Purification Method:

Protein A purification

CloneNo.:

2C11C3

## Applications

Tested Applications:

WB, IHC, Indirect ELISA

Species Specificity:

human

## Background Information

TMEM70 belongs to the TMEM70 family. It is involved in biogenesis of mitochondrial ATP synthase. Defects in TMEM70 are a cause of mitochondrial encephalomyopathy neonatal due to ATP synthase deficiency (MT-ATPSD). A publication (PMID:21147908) identified TMEM70 gene defect as a pan-ethnic disorder and further redefined it as the most common cause of nuclear-origin ATP synthase deficiency.

## Storage

Storage:

Store at -80°C.

Storage Buffer:

PBS Only

For technical support and original validation data for this product please contact:

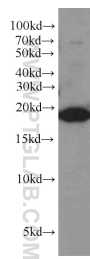
T: 1 (888) 4PTGLAB (1-888-478-4522) (toll free in USA), or 1(312) 455-8498 (outside USA)

E: [proteintech@ptglab.com](mailto:proteintech@ptglab.com)

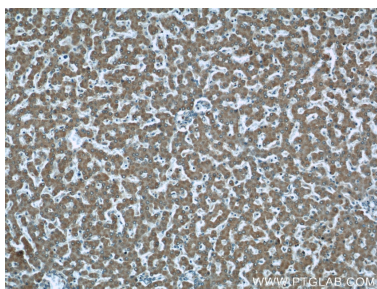
W: [ptglab.com](http://ptglab.com)

This product is exclusively available under Proteintech Group brand and is not available to purchase from any other manufacturer.

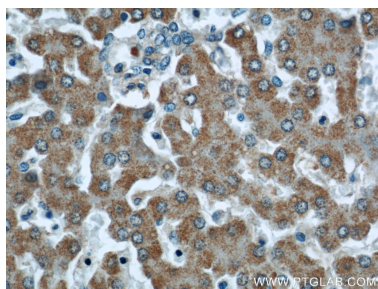
Selected Validation Data



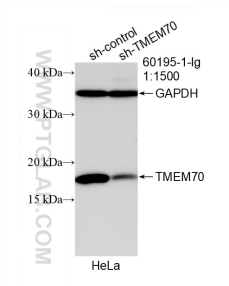
A2780 cells were subjected to SDS PAGE followed by western blot with 60195-1-Ig (TMEM70 antibody) at dilution of 1:500 incubated at room temperature for 1.5 hours. This data was developed using the same antibody clone with 60195-1-PBS in a different storage buffer formulation.



Immunohistochemical analysis of paraffin-embedded human liver using 60195-1-Ig(TMEM70 antibody) at dilution of 1:50 (under 10x lens). This data was developed using the same antibody clone with 60195-1-PBS in a different storage buffer formulation.



Immunohistochemical analysis of paraffin-embedded human liver using 60195-1-Ig(TMEM70 antibody) at dilution of 1:50 (under 40x lens). This data was developed using the same antibody clone with 60195-1-PBS in a different storage buffer formulation.



WB result of TMEM70 antibody (60195-1-Ig; 1:1500; incubated at room temperature for 1.5 hours) with sh-Control and sh-TMEM70 transfected HeLa cells. This data was developed using the same antibody clone with 60195-1-PBS in a different storage buffer formulation.