

For Research Use Only

IL-7 Monoclonal antibody, PBS Only (Detector)

Catalog Number: 60206-4-PBS



Basic Information

Catalog Number: 60206-4-PBS	GenBank Accession Number: BC047698	Purification Method: Protein G purification
Size: 100ug , Concentration: 1 mg/ml by Nanodrop;	GeneID (NCBI): 3574	CloneNo.: 5H6B7
Source: Mouse	UNIPROT ID: P13232	Affinity: $K_D = 4.79 \times 10^{-10}M$
Isotype: IgG1	Full Name: interleukin 7	$K_{Off} = 3.61 \times 10^{-6}M$
Immunogen Catalog Number: AG16314	Calculated MW: 20 kDa	$K_{On} = 7.53 \times 10^3M$

Applications

Tested Applications:
Cytometric bead array, Indirect ELISA, Sample test

Species Specificity:
human

Product Information

60206-4-PBS targets IL-7 as part of a matched antibody pair:

MP50135-2: 68794-1-PBS capture and 60206-4-PBS detection (validated in Cytometric bead array)

MP50135-3: 60206-3-PBS capture and 60206-4-PBS detection (validated in Cytometric bead array)

Unconjugated mouse monoclonal antibody pair in PBS only (BSA and azide free) storage buffer at a concentration of 1 mg/mL, ready for conjugation.

This conjugation ready format makes antibodies ideal for use in many applications including: ELISAs, multiplex assays requiring matched pairs, mass cytometry, and multiplex imaging applications. Antibody use should be optimized by the end user for each application and assay.

Storage

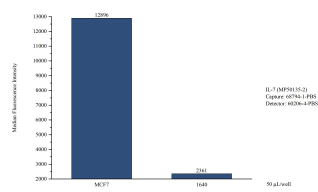
Storage:
Store at -80°C.

Storage Buffer:
PBS Only

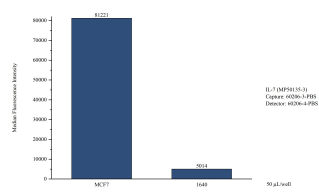
For technical support and original validation data for this product please contact:
T: 1 (888) 4PTGLAB (1-888-478-4522) (toll free in USA), or 1(312) 455-8498 (outside USA)
E: proteintech@ptglab.com
W: ptglab.com

This product is exclusively available under Proteintech Group brand and is not available to purchase from any other manufacturer.

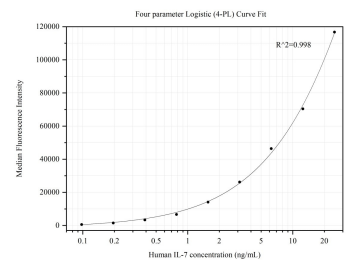
Selected Validation Data



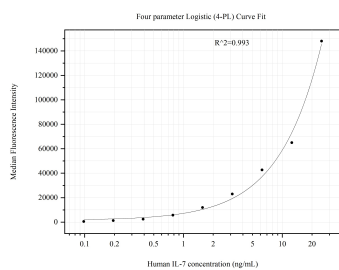
Cytometric bead array of MCF-7 cells supernatant using MP50135-2, IL-7 Monoclonal Matched Antibody Pair, PBS Only. Capture antibody: 68794-1-PBS. Detection antibody: 60206-4-PBS. Complete culture medium was served as blank control.



Cytometric bead array of MCF-7 cells supernatant using MP50135-3, IL-7 Monoclonal Matched Antibody Pair, PBS Only. Capture antibody: 60206-3-PBS. Detection antibody: 60206-4-PBS. Complete culture medium was served as blank control.



Cytometric bead array standard curve of MP50135-3, IL-7 Monoclonal Matched Antibody Pair, PBS Only. Capture antibody: 60206-3-PBS. Detection antibody: 60206-4-PBS. Standard:HZ-1281. Range: 0.098-25 ng/mL



Cytometric bead array standard curve of MP50135-2, IL-7 Monoclonal Matched Antibody Pair, PBS Only. Capture antibody: 68794-1-PBS. Detection antibody: 60206-4-PBS. Standard:HZ-1281. Range:0.098-25 ng/mL