

For Research Use Only

# LYN Monoclonal antibody

Catalog Number: 60211-1-Ig **8 Publications**



## Basic Information

<b>Catalog Number:</b> 60211-1-Ig	<b>GenBank Accession Number:</b> BC075002	<b>Purification Method:</b> Protein A purification
<b>Size:</b> 150ul, Concentration: 1500 ug/ml by Nanodrop and 1080 ug/ml by Bradford method using BSA as the standard;	<b>GeneID (NCBI):</b> 4067	<b>CloneNo.:</b> 3C7F2
<b>Source:</b> Mouse	<b>UNIPROT ID:</b> P07948	<b>Recommended Dilutions:</b> WB 1:500-1:2000 IHC 1:20-1:200 IF/ICC 1:400-1:1600
<b>Isotype:</b> IgG2a	<b>Full Name:</b> v-src-1 Yamaguchi sarcoma viral related oncogene homolog	
<b>Immunogen Catalog Number:</b> AG12723	<b>Calculated MW:</b> 512 aa, 59 kDa	
	<b>Observed MW:</b> 56 kDa	

## Applications

<b>Tested Applications:</b> WB, IHC, IF/ICC, ELISA	<b>Positive Controls:</b> WB : Jurkat cells, HeLa cells
<b>Cited Applications:</b> WB, IHC	<b>IHC :</b> human placenta tissue,
<b>Species Specificity:</b> human, mouse	<b>IF/ICC :</b> HepG2 cells,
<b>Cited Species:</b> human, mouse, rabbit	
<b>Note-IHC: suggested antigen retrieval with TE buffer pH 9.0; (*) Alternatively, antigen retrieval may be performed with citrate buffer pH 6.0</b>	

## Background Information

LYN, also named as JTK8, p53Lyn and p56Lyn, belongs to the protein kinase superfamily, Tyr protein kinase family and SRC subfamily. It is a non-receptor tyrosine-protein kinase that transmits signals from cell surface receptors and plays an important role in the regulation of innate and adaptive immune responses, hematopoiesis, responses to growth factors and cytokines, integrin signaling, but also responses to DNA damage and genotoxic agents. LYN is a component of the mTOR (mammalian target of rapamycin) pathway.

## Notable Publications

Author	Pubmed ID	Journal	Application
Deepavali Chakravarti	32958780	Nat Commun	WB
Xinyu Wu	39080495	EMBO Mol Med	WB
Shuoer Wang	38871245	Cancer Lett	WB

## Storage

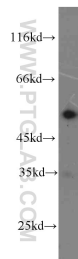
**Storage:**  
Store at -20°C. Stable for one year after shipment.  
**Storage Buffer:**  
PBS with 0.02% sodium azide and 50% glycerol, pH7.3  
**Aliquoting is unnecessary for -20°C storage**

\*\*\* 20ul sizes contain 0.1% BSA

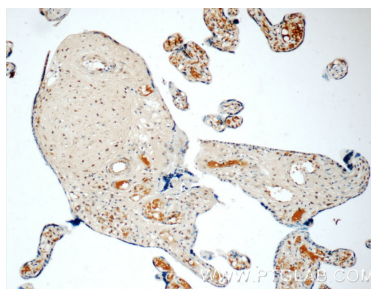
For technical support and original validation data for this product please contact:  
T: 1 (888) 4PTGLAB (1-888-478-4522) (toll free in USA), or 1(312) 455-8498 (outside USA)  
E: proteintech@ptglab.com  
W: ptglab.com

This product is exclusively available under Proteintech Group brand and is not available to purchase from any other manufacturer.

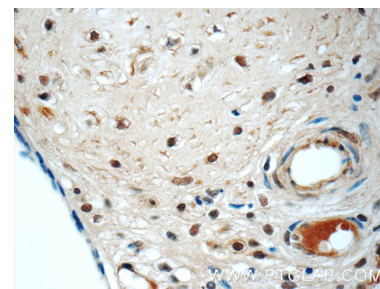
## Selected Validation Data



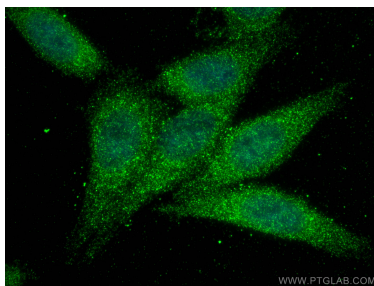
Jurkat cells were subjected to SDS PAGE followed by western blot with 60211-1-Ig (LYN antibody) at dilution of 1:1000 incubated at room temperature for 1.5 hours.



Immunohistochemical analysis of paraffin-embedded human placenta tissue slide using 60211-1-Ig (LYN Antibody) at dilution of 1:50 (under 10x lens).



Immunohistochemical analysis of paraffin-embedded human placenta tissue slide using 60211-1-Ig (LYN Antibody) at dilution of 1:50 (under 40x lens).



Immunofluorescent analysis of (4% PFA) fixed HepG2 cells using LYN antibody (60211-1-Ig, Clone: 3C7F2 ) at dilution of 1:800 and CoraLite®488-Conjugated Goat Anti-Mouse IgG(H+L).